

CORNER RECORD

COUNTY OF MADERA T. 75 R. 21E. M.D.B. & M. MERIDIAN CALIF.

CORNER TYPE: GOV'T. CORNER () MEANDER ( ) RANCHO ( ) CONTROL ( ) OTHER ( )

CORNER IDENTIFICATION --- DATE OF VISIT 24 SEPT. 19 75

N.W. Sec. Cor. Sec. 34 T. 75, R. 21E., M.D.B. & M.



CORNER -- LEFT AS FOUND () FOUND & TAGGED ( ) REESTABLISHED OBLITERATED CORNER ( )  
REBUILT ( )

PHYSICAL DESCRIPTION OF CORNER FOUND: EVIDENCE & METHOD USED TO IDENTIFY OR REESTABLISH:

2 1/2" BRASS CAP, G.L.O. MONUMENT STAMPED 1922 FOR SEC. COR 28/27 33/34 7/21.

PHYSICAL DESCRIPTION OF MONUMENTS REBUILT OR PERPETUATED:

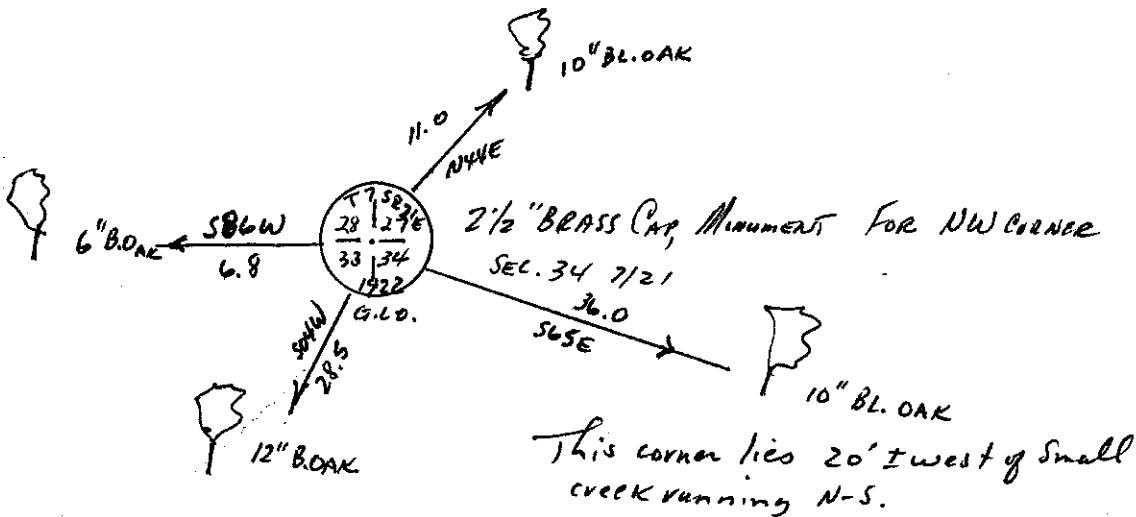
CALIFORNIA COORDINATE SYSTEM ORDER: FIRST ( ) SECOND ( ) THIRD ( )

STATIONS USED: NOS (USC & GS) ( ) STATE ( ) COUNTY ( ) OTHER ( ) STATION \_\_\_\_\_

STATION \_\_\_\_\_ ZONE \_\_\_\_\_ ELEVATION \_\_\_\_\_ NORTHINGS (Y) \_\_\_\_\_

EASTINGS (X) \_\_\_\_\_

SKETCH: (INCLUDE REFERENCE TIE OR WITNESS POINTS, REMARKS AND TOPO OF AREA)



SURVEYOR'S CERTIFICATE

THIS CORNER RECORD WAS PREPARED BY ME OR UNDER MY SUPERVISION IN CONFORMANCE WITH THE LAND SURVEYORS ACT ON 28 APRIL 1977

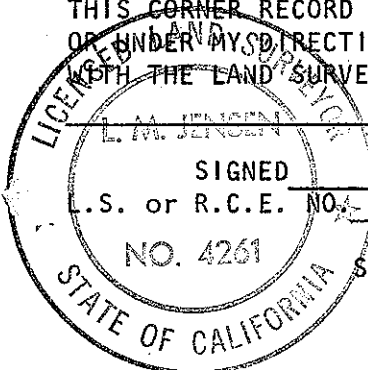
L.M. JENSEN

SIGNED

L.S. or R.C.E. NO. L.S. 4261

NO. 4261

SEAL



COUNTY SURVEYOR'S CERTIFICATE

THE CORNER RECORD WAS RECEIVED 5-9-77 AND EXAMINED AND FILED May 16 1977

BY: A. Grote

TITLE: Co. Engr.

DOCUMENT NO. 77-08-02

STATEMENT ON BACK OF SHEET

YES ( ) NO ()