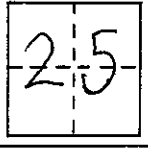


NAD27

### CORNER RECORD

COUNTY OF Madera T. 7S R. 21E Mt. Diablo MERIDIAN CALIFORNIA  
 CORNER TYPE: GOV'T. CORNER  MEANDER  RANCHO  CONTROL  OTHER   
 CORNER IDENTIFICATION - DATE OF VISIT 4-19 1990



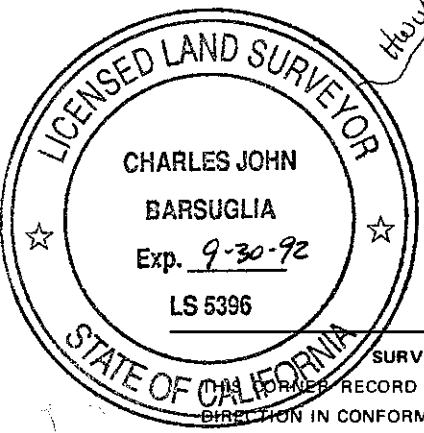
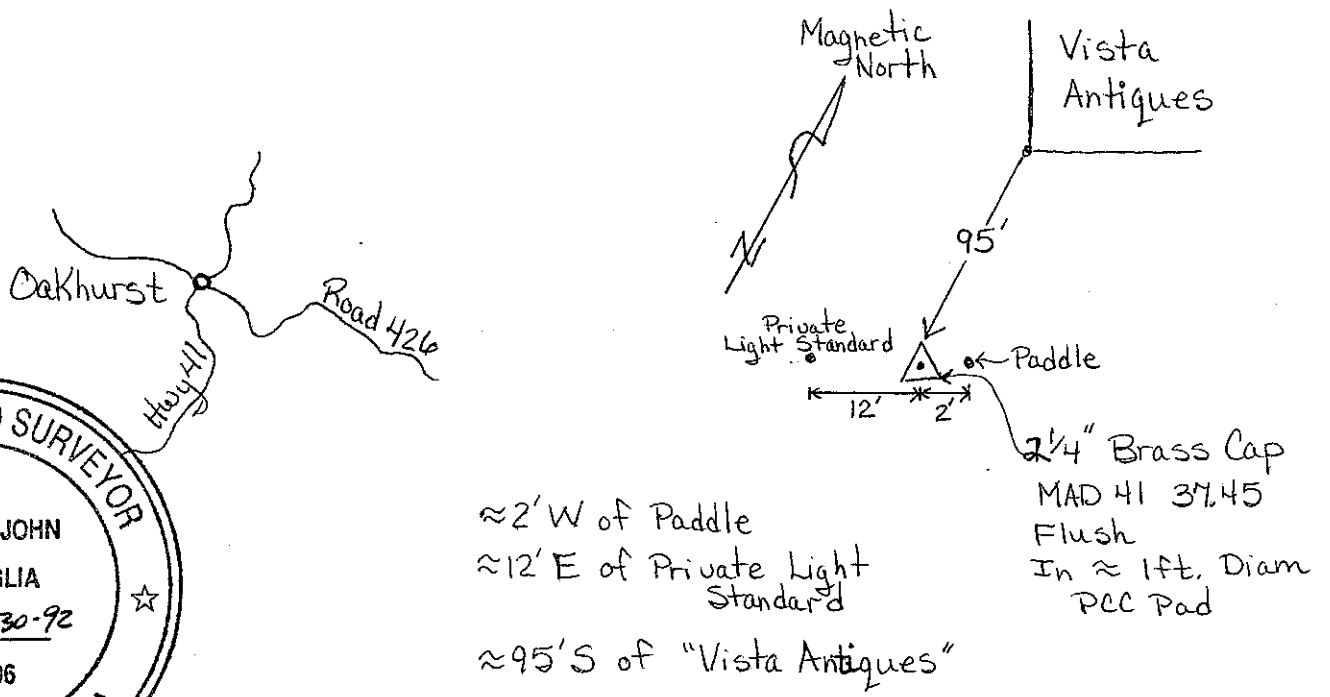
CORNER - LEFT AS FOUND  FOUND AND TAGGED  REESTABLISHED OBLITERATED CORNER  REBUILT

PHYSICAL DESCRIPTION OF CORNER FOUND; EVIDENCE AND METHOD USED TO IDENTIFY OR REESTABLISH

PHYSICAL DESCRIPTION OF MONUMENTS REBUILT OR PERPETUATED (Set) GPS - MAD41 37.45 -  
 Beginning at the "T" intersection at Road 426 and Hwy 41 in Oakhurst, drive N to NE on Hwy 41 toward Yosemite 1.8 miles. Monument on right side of Hwy 41, located in dirt road at the SE corner of "Vista Antiques" parking lot.

CALIFORNIA COORDINATE SYSTEM ORDER: FIRST  SECOND  THIRD   
 STATIONS USED: NGS (USC & GS)  STATE  COUNTY  OTHER  STATION \_\_\_\_\_ STATION \_\_\_\_\_  
 ZONE 3 ELEVATION 2494.38 NORTHINGS (Y) 736561.8520 EASTINGS (X) 1813314.4126

SKETCH: (Include reference tie or witness points, remarks and topo of area)



**SURVEYOR'S CERTIFICATE**  
 THIS CORNER RECORD WAS PREPARED BY ME OR UNDER MY DIRECTION IN CONFORMANCE WITH THE LAND SURVEYORS ACT  
 ON 5-9 1990 FOR THE STATE OF CALIFORNIA  
 SIGNED: Charles Barsuglia  
 LS or R.C.E. No.: 5396

**COUNTY SURVEYOR'S CERTIFICATE**  
 THE CORNER RECORD WAS RECEIVED \_\_\_\_\_ 19\_\_\_\_\_  
 AND EXAMINED AND FILED 6-18 1990  
 BY: Deane Stinson  
 TITLE: Co. Engin  
 DOCUMENT No. \_\_\_\_\_  
 STATEMENT ON BACK OF SHEET YES  NO

SEAL