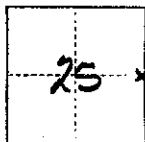


CORNER RECORD

COUNTY OF Madera T. 7 S R. 21 E MD MERIDIAN CALIFORNIA

CORNER TYPE: GOV'T. CORNER MEANDER RANCHO CONTROL OTHER

CORNER IDENTIFICATION — DATE OF VISIT July 1975



E 1/4 Cor Sec 25 7/21

CORNER — LEFT AS FOUND FOUND AND TAGGED REESTABLISHED OBLITERATED CORNER REBUILT

PHYSICAL DESCRIPTION OF CORNER FOUND; EVIDENCE AND METHOD USED TO IDENTIFY OR REESTABLISH

Found G.L.O. Brass Cap - 1917 - for E 1/4 Cor Sec 25 7/21
Original B.T.s - 20" digger pine, SB1E, 76 ft., 26" blackoak, N40W, 69 ft.

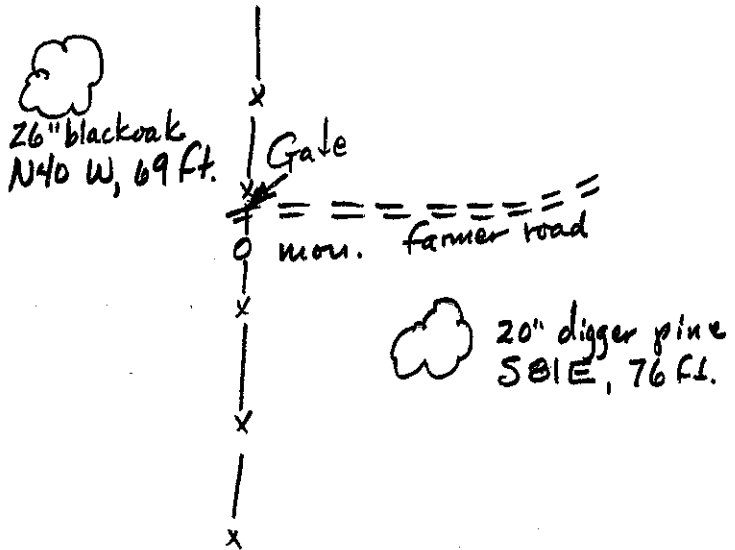
PHYSICAL DESCRIPTION OF MONUMENTS REBUILT OR PERPETUATED

CALIFORNIA COORDINATE SYSTEM ORDER: FIRST SECOND THIRD

STATIONS USED: NGS (USC & GS) STATE COUNTY OTHER STATION _____ STATION _____

_____ ELEVATION _____ NORTHINGS (Y) _____ EASTINGS (X) _____

SKETCH: (Include reference tie or witness points, remarks and topo of area)



THIS CORNER RECORD WAS PREPARED BY ME OR UNDER MY DIRECTION IN CONFORMANCE WITH THE LAND SURVEYORS ACT ON 10-26 1976
SIGNED: _____
L.S. or R.C.E. No.: 254126

COUNTY SURVEYOR'S CERTIFICATE
THE CORNER RECORD WAS RECEIVED 10-27 1976
AND EXAMINED AND FILED Oct 28 1976
BY: A. Inote
TITLE: County Engineer
DOCUMENT No. 76-31-1