

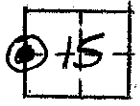
CORNER RECORD

COUNTY OF MADERA T. 75 R. 21E. M.D.B. & MERIDIAN CALIF.

CORNER TYPE: GOV'T. CORNER () MEANDER () RANCHO () CONTROL () OTHER ()

CORNER IDENTIFICATION --- DATE OF VISIT 75 APRIL 19 77

FND. ORIGINAL ROCK FOR 1/4 COR 15/7/21 WITH 1 ORIGINAL B.T. STUMP
STILL PRESENT.



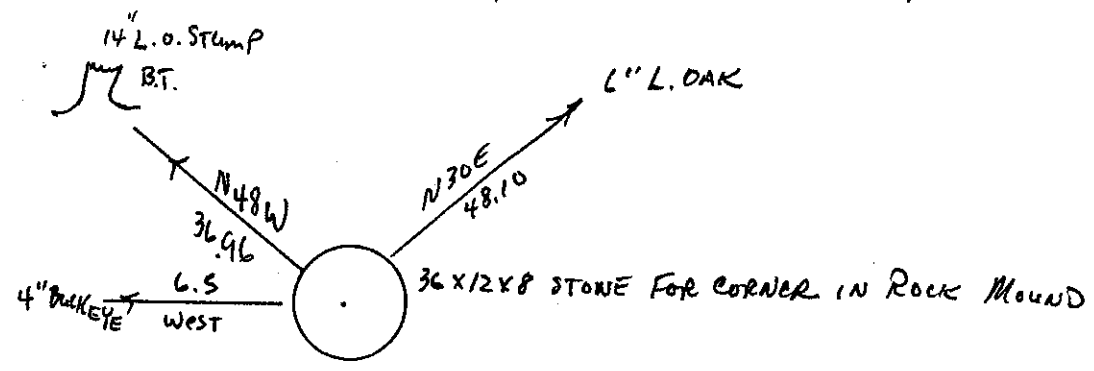
CORNER -- LEFT AS FOUND () FOUND & TAGGED () REESTABLISHED OBLITERATED CORNER ()
REBUILT ()

PHYSICAL DESCRIPTION OF CORNER FOUND: EVIDENCE & METHOD USED TO IDENTIFY OR REESTABLISH:
FND. ORIGINAL W/4 COR 15/7/21, A 36X12X8" STONE WITH ROCK MND. & 1 OLD ORIGINAL B.T. STUMP.

PHYSICAL DESCRIPTION OF MONUMENTS REBUILT OR PERPETUATED:

CALIFORNIA COORDINATE SYSTEM ORDER: FIRST () SECOND () THIRD ()
STATIONS USED: NOS (USC & GS) () STATE () COUNTY () OTHER () STATION _____
STATION _____ ZONE _____ ELEVATION _____ NORTHINGS (Y) _____
EASTINGS (X) _____

SKETCH: (INCLUDE REFERENCE TIE OR WITNESS POINTS, REMARKS AND TOPO OF AREA)



NOTE: THIS CORNER IS ON NORTH SLOPE, VERY STEEP RUGGED, ROCKY, TERRAIN & EXTREMELY BRUSHY.

SURVEYOR'S CERTIFICATE
THIS CORNER RECORD WAS PREPARED BY ME OR UNDER MY DIRECTION IN CONFORMANCE WITH THE LAND SURVEYORS ACT ON 29 APRIL 19 77
L.S. or P.C. E. NO. L.S. 4261
SIGNED [Signature]
STATE OF CALIFORNIA SEAL

COUNTY SURVEYOR'S CERTIFICATE
THE CORNER RECORD WAS RECEIVED 5-20-77 AND EXAMINED AND FILED May 20 1977
BY: A Grote
TITLE: County Engineer
DOCUMENT NO. 77-09-05
STATEMENT ON BACK OF SHEET
YES () NO ()