

CORNER RECORD

COUNTY OF MADERA T. 7S R. 21E N.D.B. MERIDIAN CALIF.

CORNER TYPE: GOV'T. CORNER ( ) MEANDER ( ) RANCHO ( ) CONTROL ( ) OTHER ( )

CORNER IDENTIFICATION --- DATE OF VISIT 22 APRIL 1977



5 1/4 COR SEC 15/7/21, 1 1/2 IP W BRASS CAP R.C.E 5982

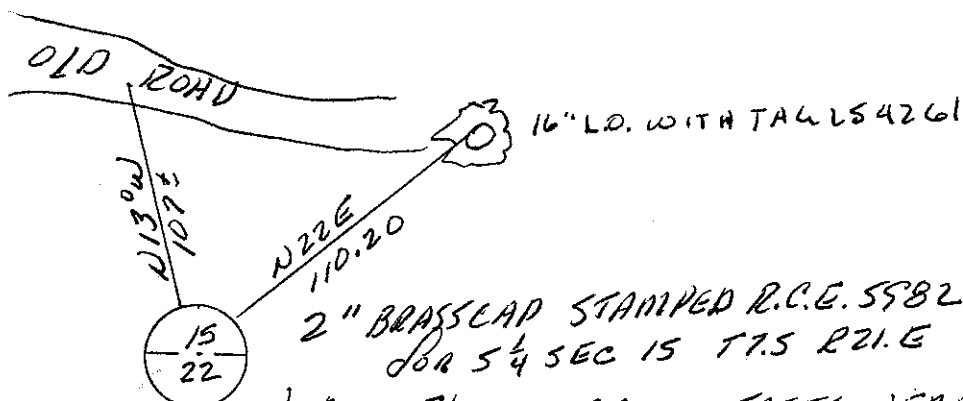
CORNER -- LEFT AS FOUND (  ) FOUND & TAGGED ( ) REESTABLISHED OBLITERATED CORNER ( )  
REBUILT ( )

PHYSICAL DESCRIPTION OF CORNER FOUND: EVIDENCE & METHOD USED TO IDENTIFY OR REESTABLISH: Fnd 1 1/2" I.P. WITH BRASS CAP STAMPED R.C.E 5982 FOR 5 1/4 COR 15/7/21 SET BY SINGLE PROPORTION BY WICKEE

PHYSICAL DESCRIPTION OF MONUMENTS REBUILT OR PERPETUATED:

CALIFORNIA COORDINATE SYSTEM ORDER: FIRST ( ) SECOND ( ) THIRD ( )  
STATIONS USED: NOS (USC & GS) ( ) STATE ( ) COUNTY ( ) OTHER ( ) STATION \_\_\_\_\_  
STATION \_\_\_\_\_ ZONE \_\_\_\_\_ ELEVATION \_\_\_\_\_ NORTHINGS (Y) \_\_\_\_\_  
EASTINGS (X) \_\_\_\_\_

SKETCH: (INCLUDE REFERENCE TIE OR WITNESS POINTS, REMARKS AND TOPO OF AREA)



2" BRASS CAP STAMPED R.C.E. 5982 FOR 5 1/4 SEC 15 T.7S R.21.E  
NOTE: THERE ARE NO TREES NEAR THIS CORNER, WHICH LIES ON THE NORTH EAST SLOPE, DIRT BRUSHY

LICENSED LAND SURVEYOR'S CERTIFICATE  
THIS CORNER RECORD WAS PREPARED BY ME OR UNDER MY DIRECTION IN CONFORMANCE WITH THE LAND SURVEYORS ACT ON 4 May 1977  
SIGNED [Signature]  
S. OF R.C.E. NO. L.S. 4261  
SEAL

COUNTY SURVEYOR'S CERTIFICATE  
THE CORNER RECORD WAS RECEIVED 5-20-77 AND EXAMINED AND FILED May 20 1977  
BY: A. Grote  
TITLE: County Engineer  
DOCUMENT NO. 77-09-03  
STATEMENT ON BACK OF SHEET  
YES ( ) NO (  )