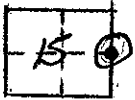


CORNER RECORD

COUNTY OF MADERA T. 7S R. 21E. M.D. 8.4 MERIDIAN CALIF.

CORNER TYPE: GOV'T. CORNER () MEANDER () RANCHO () CONTROL () OTHER ()

CORNER IDENTIFICATION --- DATE OF VISIT 75 APRIL 19 77



E 1/4 SEC. 15/7/21 1" I.P. TAGGED L.S. 2737.

CORNER -- LEFT AS FOUND () FOUND & TAGGED () REESTABLISHED OBLITERATED CORNER ()
REBUILT ()

PHYSICAL DESCRIPTION OF CORNER FOUND: EVIDENCE & METHOD USED TO IDENTIFY OR REESTABLISH:

FOUND. 1" I.P. TAGGED L.S. 2737 FOR E 1/4 15-7-21 IN FENCE LINE IN ROYAL OAKS SUBDIVISION.

PHYSICAL DESCRIPTION OF MONUMENTS REBUILT OR PERPETUATED:

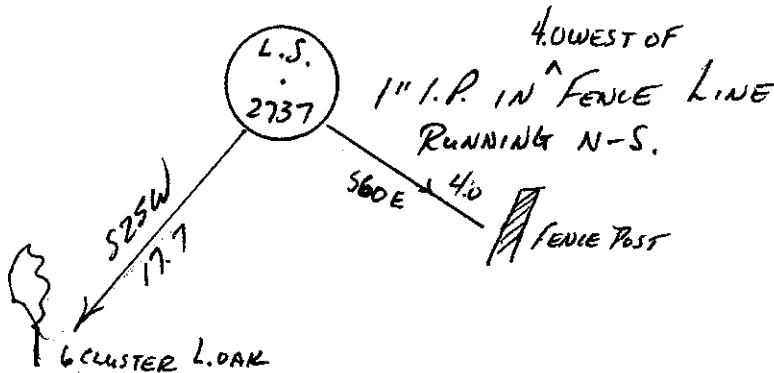
CALIFORNIA COORDINATE SYSTEM ORDER: FIRST () SECOND () THIRD ()

STATIONS USED: NOS (USC & GS) () STATE () COUNTY () OTHER () STATION _____

STATION _____ ZONE _____ ELEVATION _____ NORTHINGS (Y) _____

EASTINGS (X) _____

SKETCH: (INCLUDE REFERENCE TIE OR WITNESS POINTS, REMARKS AND TOPO OF AREA)



SURVEYOR'S CERTIFICATE

THIS CORNER RECORD WAS PREPARED BY ME OR UNDER MY DIRECTION IN CONFORMANCE WITH THE LAND SURVEYORS ACT ON 29 APRIL 19 77

L. M. JENSEN

SIGNED

L.S. or R.C.E. NO. 4261

NO. 4261

SEAL

COUNTY SURVEYOR'S CERTIFICATE

THE CORNER RECORD WAS RECEIVED 5-20-77 AND EXAMINED AND FILED May 20 1977

BY A. Krato

TITLE: County Engineer

DOCUMENT NO. 77-09-01

STATEMENT ON BACK OF SHEET

YES () NO