

CORNER RECORD

COUNTY OF MADERA T. 7S. R. 21E. M.D.B. & MERIDIAN CALIF.

CORNER TYPE: GOV'T. CORNER () MEANDER () RANCHO () CONTROL (✓) OTHER ()

CORNER IDENTIFICATION --- DATE OF VISIT MAY 10 1977



3/4" I.P. FOR C 1/4 SEC. 15/7/21 NEAR HWY 41.
& JOE WIGHT PROPERTY.

CORNER -- LEFT AS FOUND (✓) FOUND & TAGGED () REESTABLISHED OBLITERATED CORNER ()
REBUILT ()

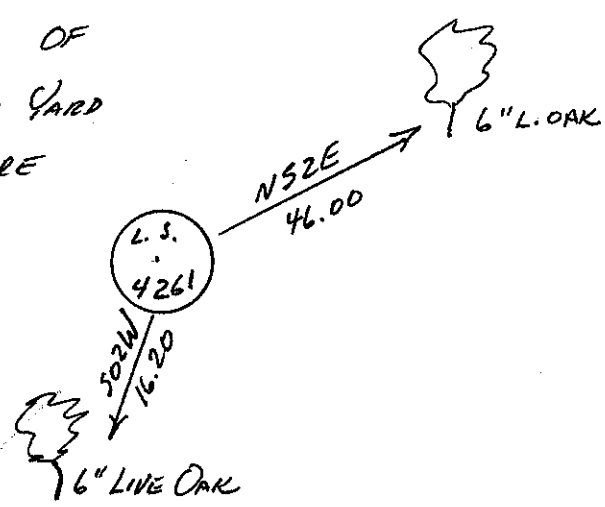
PHYSICAL DESCRIPTION OF CORNER FOUND: EVIDENCE & METHOD USED TO IDENTIFY OR
REESTABLISH: NO CORNER FOUND, SET CORNER BY INTERSECTION BETWEEN N-S &
E-W CENTERLINES OF SECTION 15.

PHYSICAL DESCRIPTION OF MONUMENTS REBUILT OR PERPETUATED:
SET 3/4" I.P. FOR C 1/4 15-7-21 WITH REFERENCE POINTS AS SHOWN BELOW.

CALIFORNIA COORDINATE SYSTEM ORDER: FIRST () SECOND () THIRD ()
STATIONS USED: NOS (USC & GS) () STATE () COUNTY () OTHER () STATION _____
STATION _____ ZONE _____ ELEVATION _____ NORTHINGS (Y) _____
EASTINGS (X) _____

SKETCH: (INCLUDE REFERENCE TIE OR WITNESS POINTS, REMARKS AND TOPO OF AREA)

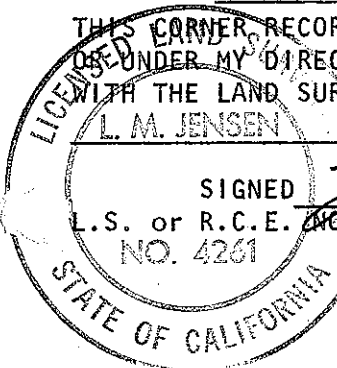
NOTE: THIS CORNER LIES NORTH OF
JOE WIGHT'S HOUSE IN HIS CLEARED YARD
AREA JUST OFF HWY 41 BEFORE
ENTERING OAK HURST.



SURVEYOR'S CERTIFICATE

THIS CORNER RECORD WAS PREPARED BY ME
UNDER MY DIRECTION IN CONFORMANCE
WITH THE LAND SURVEYORS ACT ON MAY 10
L. M. JENSEN 1977

SIGNED [Signature]
L.S. or R.C.E. NO. L.S. 4261



SEAL

COUNTY SURVEYOR'S CERTIFICATE

THE CORNER RECORD WAS RECEIVED 5-20-77
AND FILED MAY 20 1977 AND EXAMINED
BY A. Grote
TITLE: County Engineer

DOCUMENT NO. 77-09-06
STATEMENT ON BACK OF SHEET
YES () NO (X)