

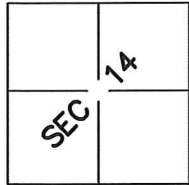
CORNER RECORD

Document Number _____

City of UNINCORPORATED

County of MADERA, California

Brief Legal Description LOTS 7 AND 8 OF BROADVIEW TERRACE SUBDIVISION NO. 1



T 7 S, R 21 E

CORNER TYPE

Government Corner Control
 Meander Property
 Rancho Other

Date of Survey 10/31/2014

COORDINATES(Optional)

N. _____
 E. _____
 Zone _____ NAD27 NAD83
 NAD83 Epoch _____
 Elev. _____
 Vert. Datum: NGVD29 NADV88
 Meas. Units: Metric Imperial

Corner - Left as found Found and tagged Established Reestablished Rebuilt

Identification and type of corner found: Evidence used to identify or procedure used to establish or reestablish the corner:

FOUND MONUMENTS OF RECORD AS SHOWN ON SHEET 2 OF 2.

A description of the physical condition of the monument as found and as set or reset: _____

REESTABLISHED CORNERS AT RECORD POSITION AS SHOWN ON SHEET 2 OF 2.

SURVEYOR'S STATEMENT

This Corner Record was prepared by me or under my direction in conformance with
 the Land Surveyor's Act on NOVEMBER 03, 2014.

Signed _____ P.L.S. or R.C.E. No.: PLS 4298



COUNTY SURVEYOR'S STATEMENT

This Corner Record was received 11/8, 2014 and examined
 and filed 11/21, 2014.

Signed David M. McGeasson P.L.S. or R.C.E. No.: 6968

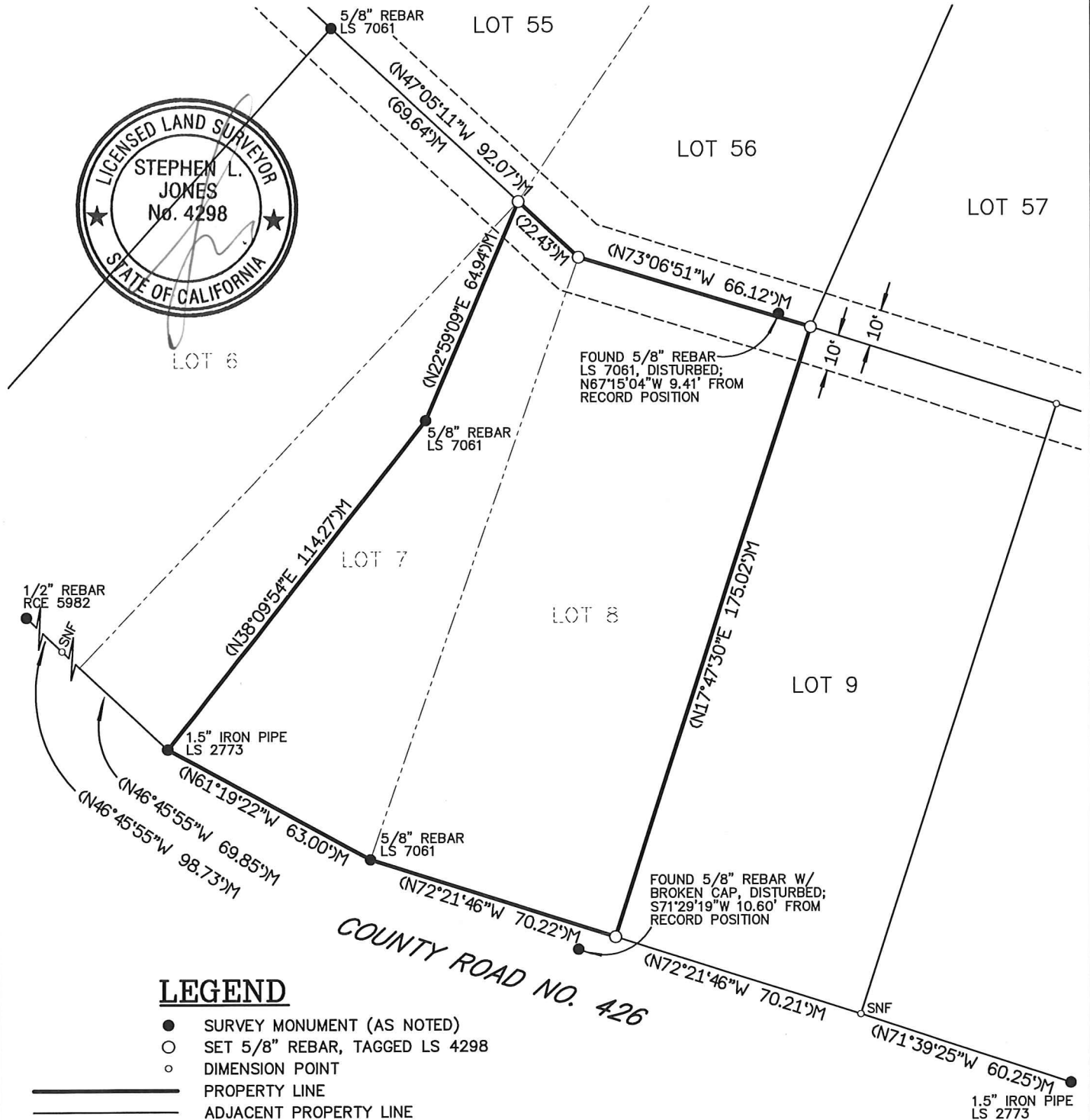
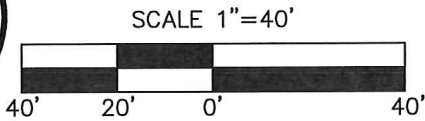
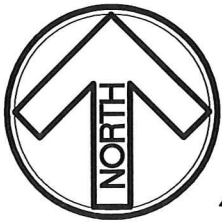
Title ACTING COUNTY SURVEYOR

County Surveyor's Comment _____



CORNER RECORD

SURVEY OF A PORTION OF LOTS 7 AND 8
OF BROADVIEW TERRACES SUBDIVISION NO. 1
RECORDED IN BOOK 8 OF MAPS AT PAGE 120, M.C.R.
SHOWN ON RECORD OF SURVEY RECORDED
IN BOOK 51 OF MAPS AT PAGE 105, M.C.R.



LEGEND

- SURVEY MONUMENT (AS NOTED)
- SET 5/8" REBAR, TAGGED LS 4298
- DIMENSION POINT
- PROPERTY LINE
- ADJACENT PROPERTY LINE
- - - NOT A DIVISION LINE
- - - EASEMENT LINE
- (...) RECORD OF SURVEY, BK 51, PG 105, M.C.R.
- M MEASURED
- SNF SEARCHED FOR, BUT NOT FOUND



JONES & SNYDER SURVEYING
P.O. BOX 2292, OAKHURST, CA 93844
(559)883-7661, WWW.JSSURVEYING.COM

DATE: NOV. 03, 2014 DWG. FILE: 14-268CR
JOB NO: 14-268 DRAWN BY: RJD