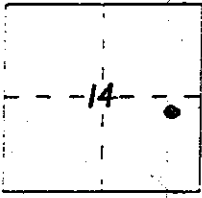


CORNER RECORD

Document Number _____

City of _____ County of Madera, California

Brief Legal Description: Parcel 2 of Parcel Map No. 2474, Book 30 of Maps, Pg. 193, M.C.R.



CORNER TYPE

COORDINATES (Optional)

Government Corner Control
Meander Property
Rancho Other
Date of Survey Jan 3, 2006

N. _____
E. _____
Zone _____ Datum _____
Elev. _____

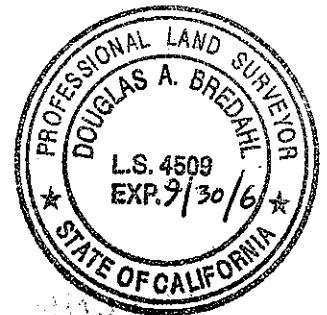
Corner — Left as found Found and tagged Established Reestablished Rebuilt

Identification and type of corner found: Evidence used to identify or procedure used to establish or reestablish the corner:
Set carriage bolt in & Washburn
per sketch on side 2

A description of the physical condition of the monument as found and as set or reset:
set carriage bolt at NW corner

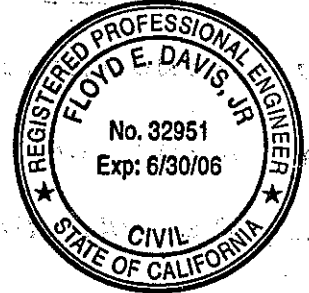
SURVEYOR'S STATEMENT

This Corner Record was prepared by me or under my direction in conformance with the Land Surveyors' Act on January 12, 2006
Signed Douglas Bredahl L.S. Number 4509



COUNTY SURVEYOR'S STATEMENT

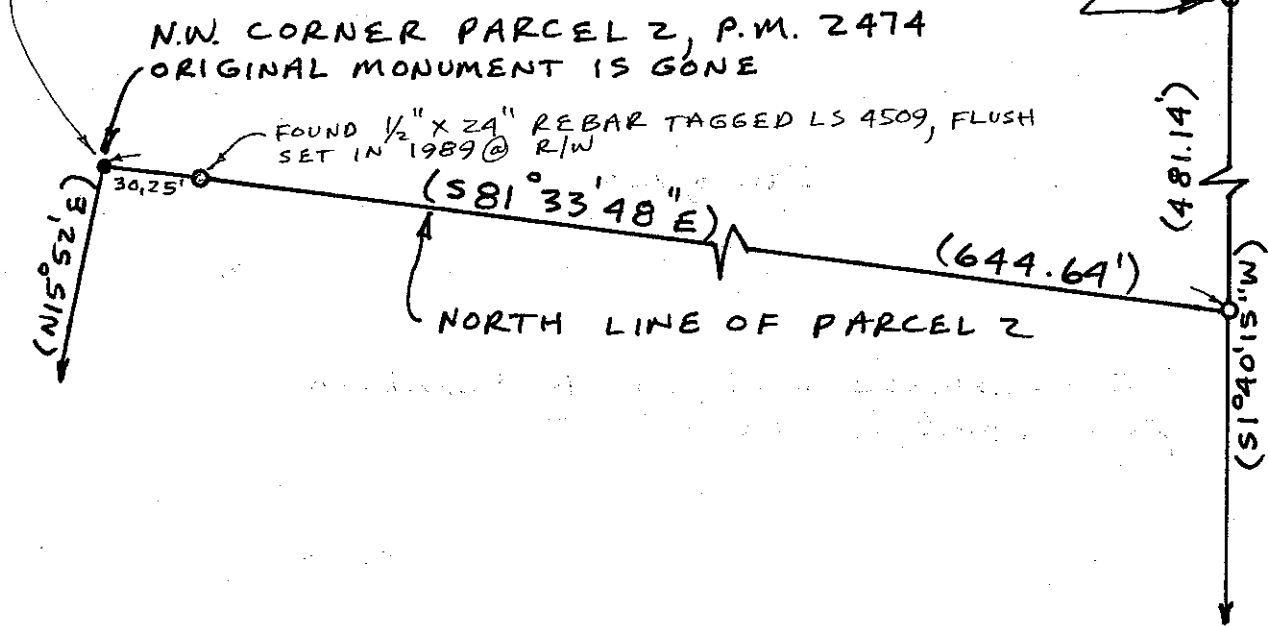
This Corner Record was received January 18, 2006 and examined and filed January 18, 2006
Signed Floyd E. Davis, Jr. Title County Surveyor



County Surveyor's Comment _____

TIES: S28°W 28.12' TO 30d nail in POWER POLE (ON W/S)
 N52°W 33.72' TO 30d nail in LIVE OAK (COPIA OF 3)

E 1/4 CORNER SECTION
 14, 7/21 FOUND 1"
 IP LS 2737, FLUSH



LEGEND

- MONUMENTS FOUND, 1/2" REBAR TAGGED L.S. 4509, OR AS NOTED
- MONUMENT SET, 3/8" X 8" CARRIAGE BOLT IN & WASHBURN
- (...) RECORD DATA PER P.M. 2474, BK. 30, P. 193, M.C.R.