

CORNER RECORD

COUNTY OF MADERA T. 7 SOUTH R. 21 EAST M.D.B.R. MERIDIAN CALIFORNIA

CORNER TYPE: GOV'T. CORNER MEANDER RANCHO CONTROL OTHER

CORNER IDENTIFICATION — DATE OF VISIT MARCH 14 1980



NORTH 1/4 CORNER, SECTION 14 7/21

CORNER — LEFT AS FOUND FOUND AND TAGGED REESTABLISHED OBLITERATED CORNER REBUILT

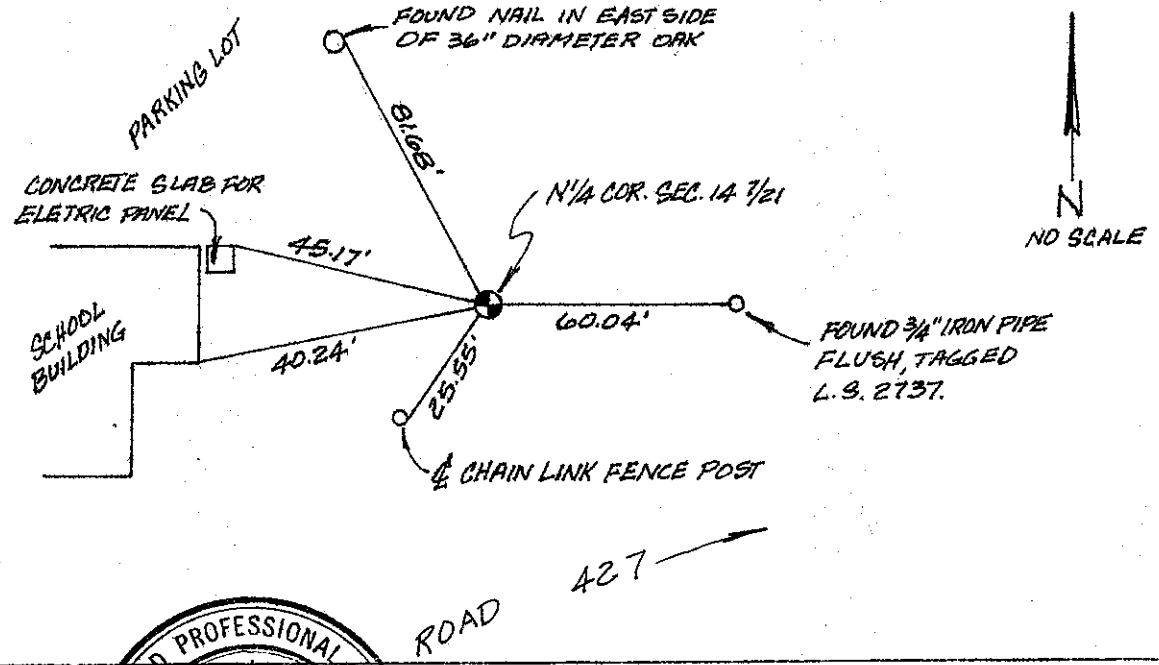
PHYSICAL DESCRIPTION OF CORNER FOUND; EVIDENCE AND METHOD USED TO IDENTIFY OR REESTABLISH
FOUND 3/4" IRON PIPE TAGGED L.S. 2931, 6" UNDER PAVEMENT IN ACCESS ROAD TO DAKHURST ELEMENTARY SCHOOL. PARKING LOT, NORTH OF RD. 427.

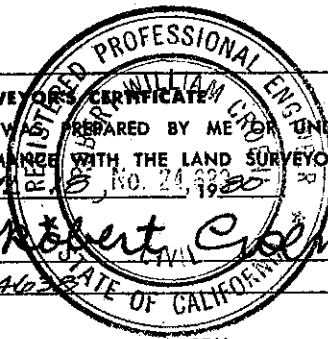
PHYSICAL DESCRIPTION OF MONUMENTS REBUILT OR PERPETUATED

SAME AS ABOVE

CALIFORNIA COORDINATE SYSTEM ORDER: FIRST SECOND THIRD
 STATIONS USED: NGS (USC & GS) STATE COUNTY OTHER STATION _____ STATION _____
 ZONE _____ ELEVATION _____ NORTHINGS (Y) _____ EASTINGS (X) _____

SKETCH: (Include reference tie or witness points, remarks and topo of area)





SURVEYOR'S CERTIFICATE
 THIS CORNER RECORD WAS PREPARED BY ME UNDER MY DIRECTION IN CONFORMANCE WITH THE LAND SURVEYORS ACT ON APRIL 25, No. 24,332 1980
 SIGNED: Robert C. [unreadable]
 P.E. or R.C.E. No.: 24625 STATE OF CALIFORNIA
 SEAL

COUNTY SURVEYOR'S CERTIFICATE
 THE CORNER RECORD WAS RECEIVED _____ 19____
 AND EXAMINED AND FILED _____ 19____
 BY [Signature]
 TITLE: _____
 DOCUMENT No. _____
 STATEMENT ON BACK OF SHEET
 YES NO