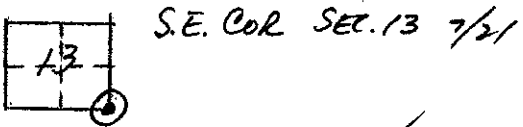


CORNER RECORD

COUNTY OF MARICOPA T. 7S R. 21E M.D.B. & MERIDIAN CALIF.

CORNER TYPE: GOV'T. CORNER () MEANDER () RANCHO () CONTROL () OTHER ()

CORNER IDENTIFICATION --- DATE OF VISIT 15 APRIL 1977 19 77



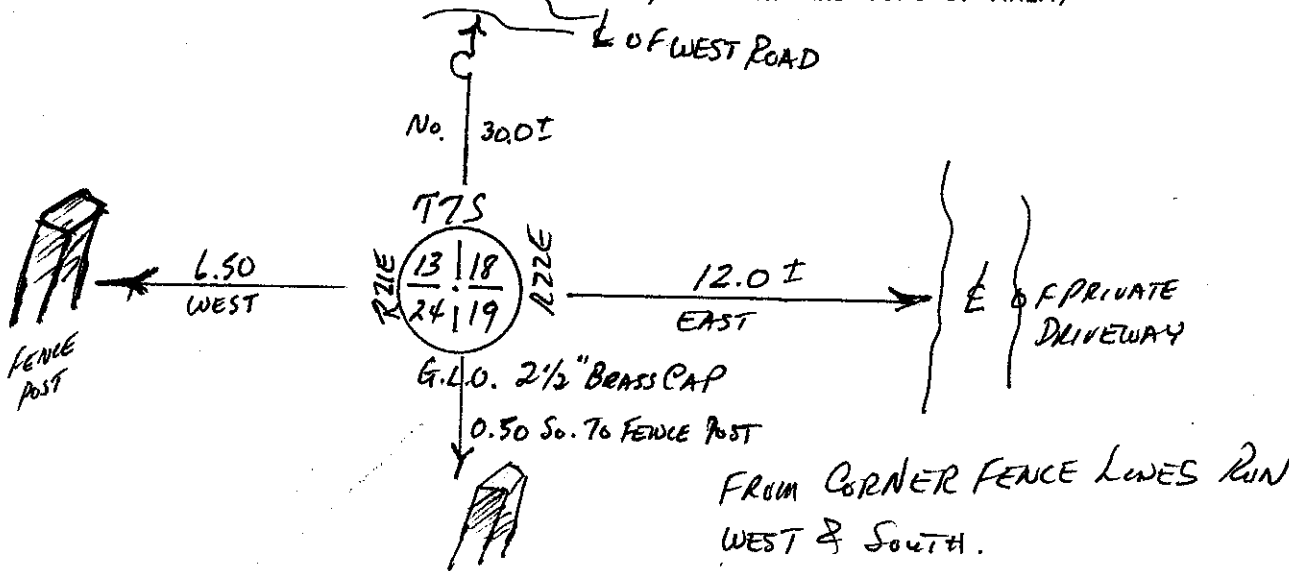
CORNER -- LEFT AS FOUND () FOUND & TAGGED () REESTABLISHED OBLITERATED CORNER () REBUILT ()

PHYSICAL DESCRIPTION OF CORNER FOUND: EVIDENCE & METHOD USED TO IDENTIFY OR REESTABLISH: FOUND 2 1/2" BRASS CAP STAMPED G.L.O. FOR S.E. COR. SEC. 13 7/21 NEAR WEST ROAD & PRIVATE DRIVEWAY IN FENCE LINES AS SHOWN BELOW.

PHYSICAL DESCRIPTION OF MONUMENTS REBUILT OR PERPETUATED:

CALIFORNIA COORDINATE SYSTEM ORDER: FIRST () SECOND () THIRD () STATIONS USED: NOS (USC & GS) () STATE () COUNTY () OTHER () STATION _____ STATION _____ ZONE _____ ELEVATION _____ NORTHINGS (Y) _____ EASTINGS (X) _____

SKETCH: (INCLUDE REFERENCE TIE OR WITNESS POINTS, REMARKS AND TOPO OF AREA)



SURVEYOR'S CERTIFICATE
 THE CORNER RECORD WAS PREPARED BY ME UNDER MY DIRECTION IN CONFORMANCE WITH THE LAND SURVEYORS ACT ON 19 MAY 1977
 L. M. JENSEN
 SIGNED [Signature]
 L.S. NO. 4261
 STATE OF CALIFORNIA
 SEAL

COUNTY SURVEYOR'S CERTIFICATE
 THE CORNER RECORD WAS RECEIVED 5-20-77 AND EXAMINED AND FILED MAY 20 1977
 BY: A. Grote
 TITLE: County Engineer
 DOCUMENT NO. 77-09-08
 STATEMENT ON BACK OF SHEET
 YES () NO ()