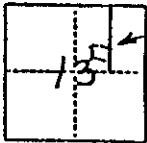


CORNER RECORD

COUN. OF MADERA T. 7 S. R. 21 E. MOBEM MERIDIAN CALIFORNIA  
 CORNER TYPE: GOVT. CORNER  MEANDER  RANCHO  CONTROL  OTHER   
 CORNER IDENTIFICATION — DATE OF VISIT 2.10 19 98



LOT 36

SECTION 13 7/21

SW CORNER LOT 36  
 "PIERCE LAKE ESTATES"

CORNER — LEFT AS FOUND  FOUND AND TAGGED  REESTABLISHED OBLITERATED CORNER  REBUILT

PHYSICAL DESCRIPTION OF CORNER FOUND, EVIDENCE AND METHOD USED TO IDENTIFY OR REESTABLISH

RESET AT RECORDED POSITION AS PER "PIERCE LAKE ESTATES" VOL. 29 OF MAPS AT PG. 197 M.C.R. USING FOUND ADJACENT CORNERS AS SHOWN ON SKETCH.

PHYSICAL DESCRIPTION OF MONUMENTS REBUILT OR PERPETUATED

SET 5/8" REBAR 30" LONG & LG. 4298 CAP

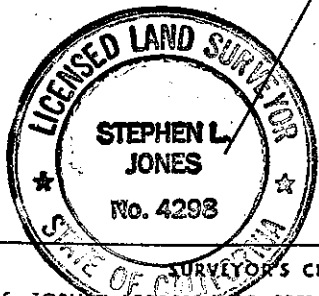
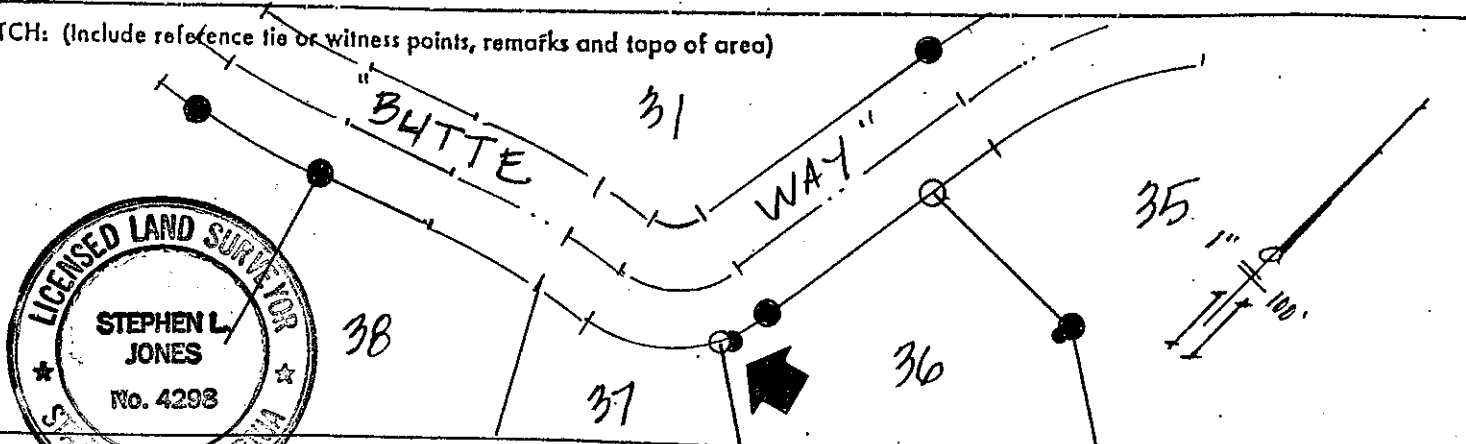
ALSO SET 5' FENCE POST ALONG SIDE

(ALSO FOUND 3/4" IRON PIPE SET IN FILL OF ADJACENT PAD N. 1°43' W. 4.14 FEET)

CALIF. COORDINATE SYSTEM ORDER: FIRST  SECOND  THIRD   
 STATIONS USED: NGS (USC & GS)  STATE  COUNTY  OTHER  STATION \_\_\_\_\_ STATION \_\_\_\_\_  
 ZONE \_\_\_\_\_ ELEVATION \_\_\_\_\_ NORTHINGS (M) \_\_\_\_\_ EASTINGS (M) \_\_\_\_\_

(Fold)

SKETCH: (Include reference tie or witness points, remarks and topo of area)



**SURVEYOR'S CERTIFICATE**  
 THIS CORNER RECORD WAS PREPARED BY ME OR UNDER MY DIRECTION IN CONFORMANCE WITH THE LAND SURVEYORS ACT ON 2.18. 19 98  
 SIGNED: [Signature]  
 L.S. or R.C.E. No. LS 4298

**COUNTY SURVEYOR'S CERTIFICATE**  
 THE CORNER RECORD WAS RECEIVED \_\_\_\_\_ 19\_\_\_\_\_  
 AND EXAMINED AND FILED \_\_\_\_\_ 19\_\_\_\_\_  
 BY: \_\_\_\_\_  
 TITLE: \_\_\_\_\_  
 DOCUMENT No. \_\_\_\_\_

SEAL

STATEMENT ON BACK OF SHEET YES  NO