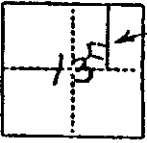


CORNER RECORD

COUN. OF MADERA T. 7 S R. 21 E MOB & M MERIDIAN CALIFORNIA
 CORNER TYPE: GOVT. CORNER MEANDER RANCHO CONTROL OTHER
 CORNER IDENTIFICATION — DATE OF VISIT 2.10 19 98



LOT 36

SECTION 13 7/21 "NW CORNER LOT 36
 "PIERCE LAKE ESTATES"

CORNER — LEFT AS FOUND FOUND AND TAGGED REESTABLISHED OBLITERATED CORNER REBUILT

PHYSICAL DESCRIPTION OF CORNER FOUND, EVIDENCE AND METHOD USED TO IDENTIFY OR REESTABLISH

RESET AT RECORD POSITION AS PER "PIERCE LAKE ESTATES" VOL. 29 OF MAPS AT Pg. 197 M.C.E. USING FOUND ADJACENT CORNERS AS SHOWN ON SKETCH.

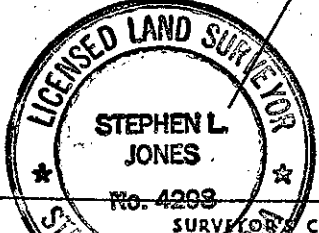
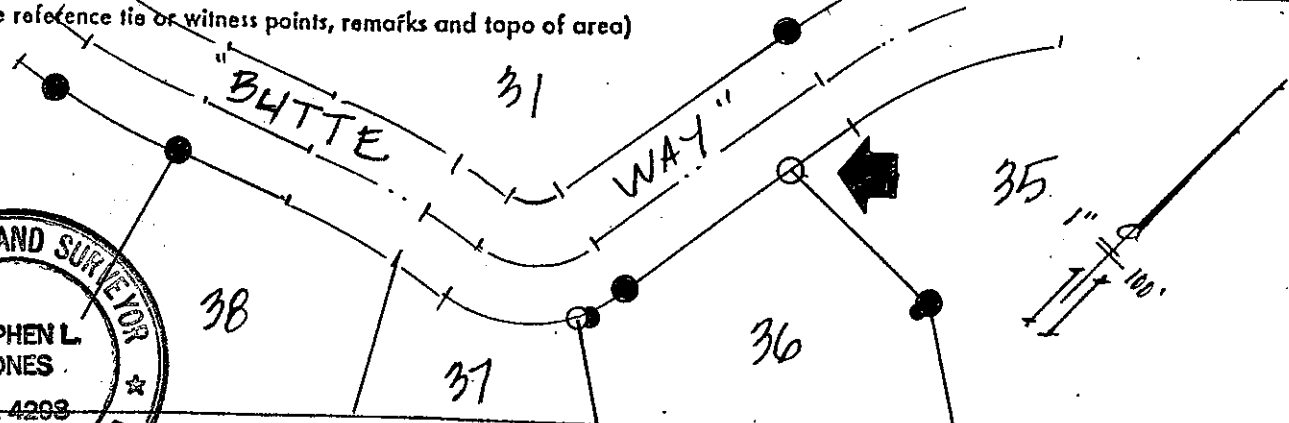
PHYSICAL DESCRIPTION OF MONUMENTS REBUILT OR PERPETUATED

SET 5/8" REBAR 30" LONG & CG. 4298 CAP
 ALSO SET 5' FENCE POST ALONG SIDE

CALIF. COORDINATE SYSTEM ORDER: FIRST SECOND THIRD
 STATIONS USED: NGS (USC & GS) STATE COUNTY OTHER STATION _____ STATION _____
 ZONE _____ ELEVATION _____ NORTHINGS (N) _____ EASTINGS (E) _____

(Fold)

SKETCH: (Include reference tie or witness points, remarks and topo of area)



THIS CORNER RECORD WAS PREPARED BY ME OR UNDER MY DIRECT SUPERVISION IN CONFORMANCE WITH THE LAND SURVEYORS ACT ON 2.18.98 19 98
 SIGNED: [Signature]
 L.S. or R.C.E. No. LS. 4298

SEAL

COUNTY SURVEYOR'S CERTIFICATE
 THE CORNER RECORD WAS RECEIVED _____ 19_____
 AND EXAMINED AND FILED _____ 19_____
 BY: _____
 TITLE: _____

DOCUMENT No. _____
 STATEMENT ON BACK OF SHEET

YES NO