

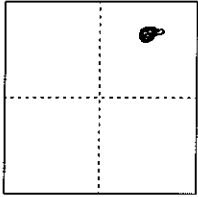
CORNER RECORD

Document Number \_\_\_\_\_

City of \_\_\_\_\_

County of Madera, California

Brief Legal Description NE COR Lot 13 Pierce Lake Estates



CORNER TYPE 13 7/21

COORDINATES (OPTIONAL)

Government Corner  Control   
Meander  Property   
Rancho  Other   
Date of Survey August 29, 1996

N. \_\_\_\_\_  
E. \_\_\_\_\_  
Zone \_\_\_\_\_ Datum \_\_\_\_\_  
Elevation \_\_\_\_\_

CORNER -- Left as found  Found and tagged  Established  Reestablished  Rebuilt

Identification and type of corner found; Evidence used to identify or procedure used to establish or reestablish the corner:  
*Set at record position relative to nearby existing monumentation.*

A description of the physical condition of the monument as found and as set or reset:  
*Set #4 rebar, up 3", tagged PLS 7061.*

SURVEYOR'S STATEMENT

This Corner Record was prepared by me or under my direction in conformance with the Land Surveyors' Act on September 11, 1996.

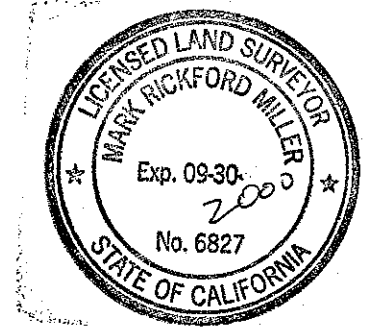
Signed Travis Davis PLS 7061



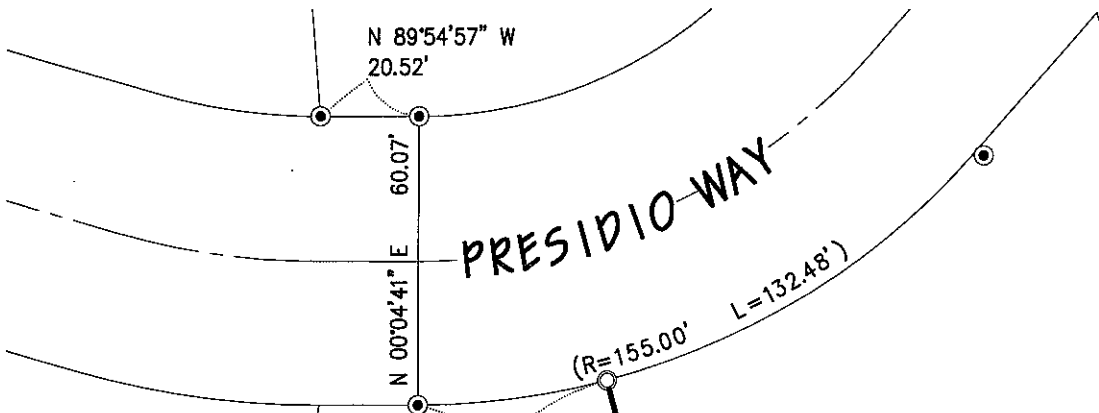
COUNTY SURVEYOR'S STATEMENT

This Corner Record was received 12 SEP 1996 and examined and filed 2 FEB 2000 1996.

Signed [Signature] Title ACT Co. SURVEYOR



Co. Surveyor's Comment: PROPERTY CORNER - TRACT 192  
PIERCE LAKE ESTATES (FD IN A STACK OF PAPERWORK &  
FILED LATE)



( $\Delta = 14'47'10''$   
 $R = 155.00'$   
 $L = 40.00'$ )

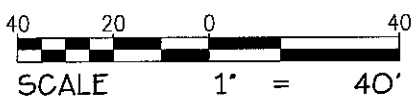
### LEGEND

- Found 3/4" iron pipe.  
up 6', no tag, or as noted
- Set #4 rebar, PLS 7061.  
up 3'
- (...) Record data per Tract 192.  
Bk. 29, Pgs. 195-197, Madera  
County Records



LOT 13

LOT 12



(N 15°00'36" W)

289.14'

LS 4509  
up 12'

0721