

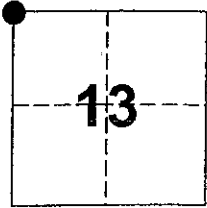
City of Oakhurst

Document Number _____

Brief Legal Description Northwest corner, Section 13, T. 7 S., R. 21 E., M.D.B. & M.

County of Madera

California



CORNER TYPE

COORDINATES(Optional)

Government Corner Control
 Meander Property
 Rancho Other

N. _____
 E. _____
 Zone _____ NAD27 NAD83
 NAD83 Epoch _____
 Elevation _____
 Vert. Datum: NGVD29 NAV88
 Meas. Units: Metric Imperial

Date of Survey 08-02-2002

Corner - Left as found Found and tagged Established Reestablished Rebuilt

Identification and type of corner found: Evidence used to identify or procedure used to establish or reestablish the corner:
Found brass cap monument, flush, stamped RCE 14155. Corner was destroyed during construction.
Corner was reestablished using ties set prior to construction.

A description of the physical condition of the monument as found and as set or reset: _____
Set brass cap monument, stamped "PLS 6335", flush in concrete with 3' offsets North, South, East, & West.

SURVEYOR'S STATEMENT

This Corner Record was prepared by me or under my direction in conformance with
 the Land Surveyor's Act on August 07, 2002

Signed *Peter Espinosa* P.L.S. or R.C.E. Number PLS 6335



COUNTY SURVEYOR'S STATEMENT

This Corner Record was received August 12, 2002 and examined
 and filed August 27, 2002

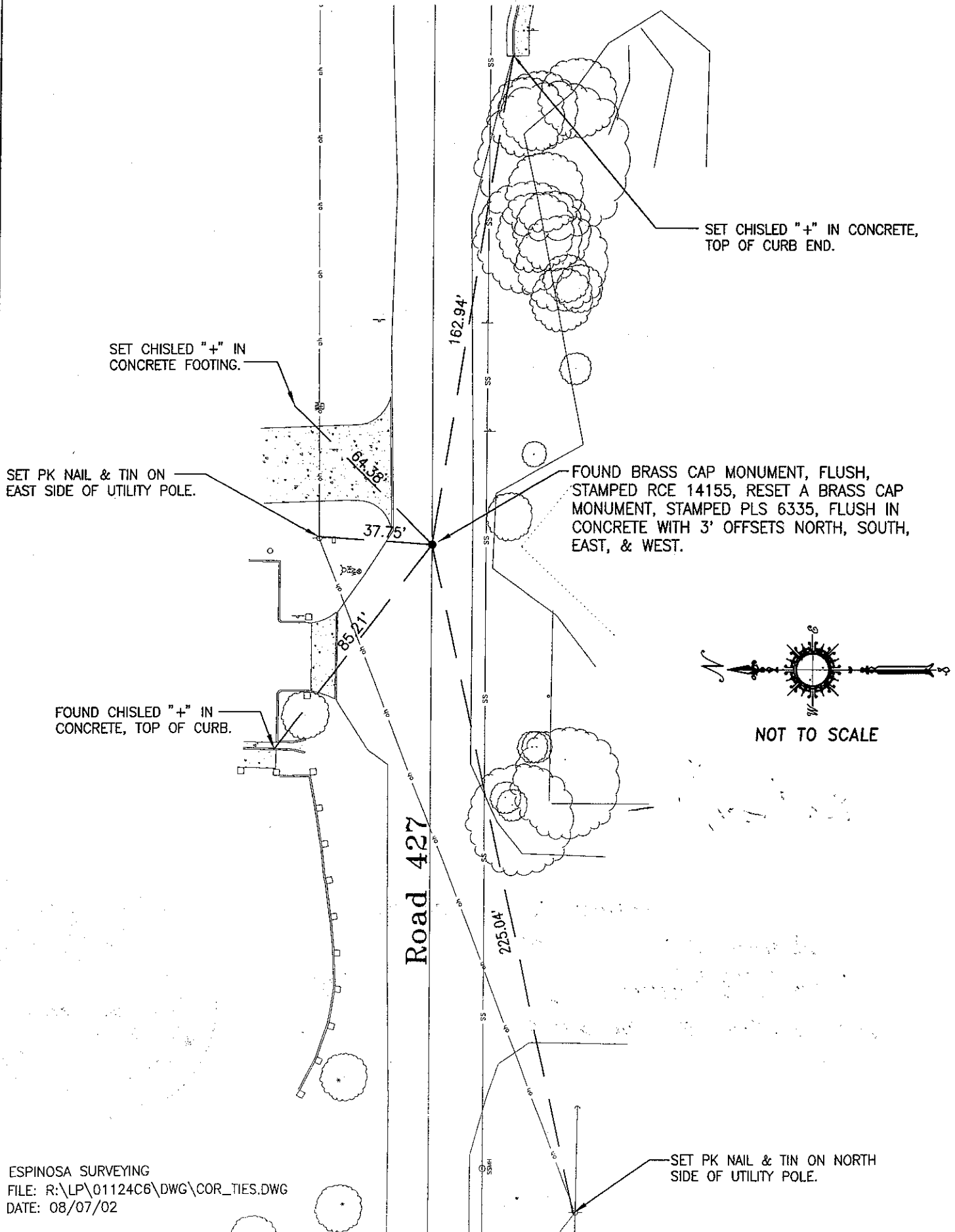
Signed *David M. McGlasson* P.L.S. or R.C.E. Number 6968

Title ACTING COUNTY SURVEYOR

County Surveyor's Comment _____



**THE NORTHWEST CORNER OF SECTION 13, T. 7 S., R. 21 E., M.D.B. & M.
Road 427**



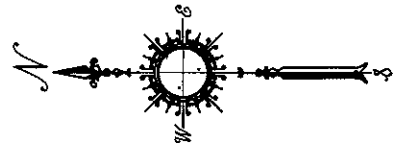
SET CHISLED "+" IN CONCRETE FOOTING.

SET PK NAIL & TIN ON EAST SIDE OF UTILITY POLE.

SET CHISLED "+" IN CONCRETE, TOP OF CURB END.

FOUND BRASS CAP MONUMENT, FLUSH, STAMPED RCE 14155, RESET A BRASS CAP MONUMENT, STAMPED PLS 6335, FLUSH IN CONCRETE WITH 3' OFFSETS NORTH, SOUTH, EAST, & WEST.

FOUND CHISLED "+" IN CONCRETE, TOP OF CURB.



NOT TO SCALE

Road 427

SET PK NAIL & TIN ON NORTH SIDE OF UTILITY POLE.