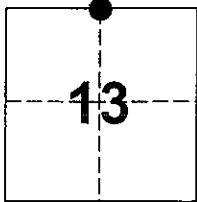


Document Number \_\_\_\_\_

City of Oakhurst County of Madera, California  
Brief Legal Description North 1/4 corner, Section 13, T. 7 S., R. 21 E., M.D.B. & M.



**CORNER TYPE**

**COORDINATES(Optional)**

Government Corner  Control   
Meander  Property   
Rancho  Other

N. \_\_\_\_\_  
E. \_\_\_\_\_  
Zone \_\_\_\_\_ NAD27  NAD83   
NAD83 Epoch \_\_\_\_\_  
Elevation \_\_\_\_\_  
Vert. Datum: NGVD29  NAV88   
Meas. Units: Metric  Imperial

Date of Survey 08-02-2002

Corner - Left as found  Found and tagged  Established  Reestablished  Rebuilt

Identification and type of corner found: Evidence used to identify or procedure used to establish or reestablish the corner:  
Found brass cap monument, flush. Corner was destroyed during construction. Corner was reestablished using ties set prior to construction.

A description of the physical condition of the monument as found and as set or reset: \_\_\_\_\_  
Set brass cap monument, stamped "PLS 6335", flush in concrete with 3' offsets North, South, East, & West.

**SURVEYOR'S STATEMENT**

This Corner Record was prepared by me or under my direction in conformance with the Land Surveyor's Act on August 07, 2002  
Signed *Peter Espinosa* P.L.S. or R.C.E. Number PLS6335



**COUNTY SURVEYOR'S STATEMENT**

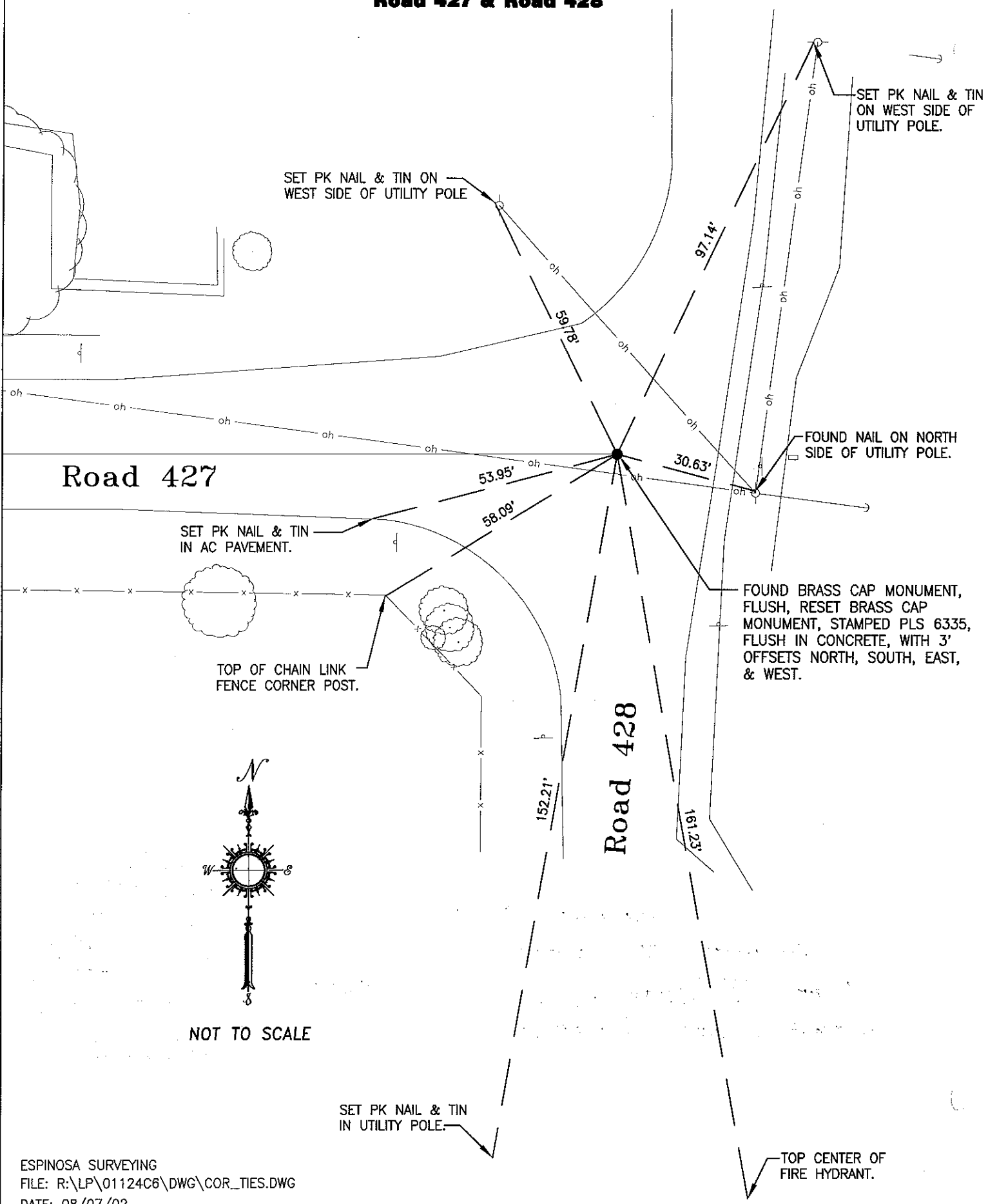
This Corner Record was received August 12, 2002 and examined and filed August 27, 2002  
Signed *David M. McGlasson* P.L.S. or R.C.E. Number 6968



Title ACTING COUNTY SURVEYOR

County Surveyor's Comment \_\_\_\_\_

**NORTH QUARTER CORNER SECTION 13, T. 7 S., R. 21 E., M.D.B. & M.**  
**Road 427 & Road 428**



Road 427

Road 428

SET PK NAIL & TIN ON WEST SIDE OF UTILITY POLE

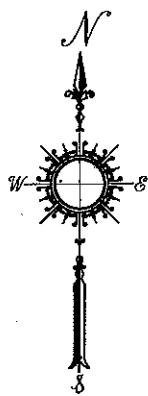
SET PK NAIL & TIN ON WEST SIDE OF UTILITY POLE.

SET PK NAIL & TIN IN AC PAVEMENT.

FOUND NAIL ON NORTH SIDE OF UTILITY POLE.

TOP OF CHAIN LINK FENCE CORNER POST.

FOUND BRASS CAP MONUMENT, FLUSH, RESET BRASS CAP MONUMENT, STAMPED PLS 6335, FLUSH IN CONCRETE, WITH 3' OFFSETS NORTH, SOUTH, EAST, & WEST.



NOT TO SCALE

SET PK NAIL & TIN IN UTILITY POLE.

TOP CENTER OF FIRE HYDRANT.