

CORNER RECORD

COUNTY OF MARICOPA T. 7S R. 21E M.D.B. 4 MERIDIAN CALIF.

CORNER TYPE: GOV'T. CORNER () MEANDER () RANCHO () CONTROL () OTHER ()

CORNER IDENTIFICATION --- DATE OF VISIT 15 APRIL 1977



E 1/4 Sec. 13 7/4

CORNER -- LEFT AS FOUND () FOUND & TAGGED () REESTABLISHED OBLITERATED CORNER ()
REBUILT ()

PHYSICAL DESCRIPTION OF CORNER FOUND: EVIDENCE & METHOD USED TO IDENTIFY OR REESTABLISH:

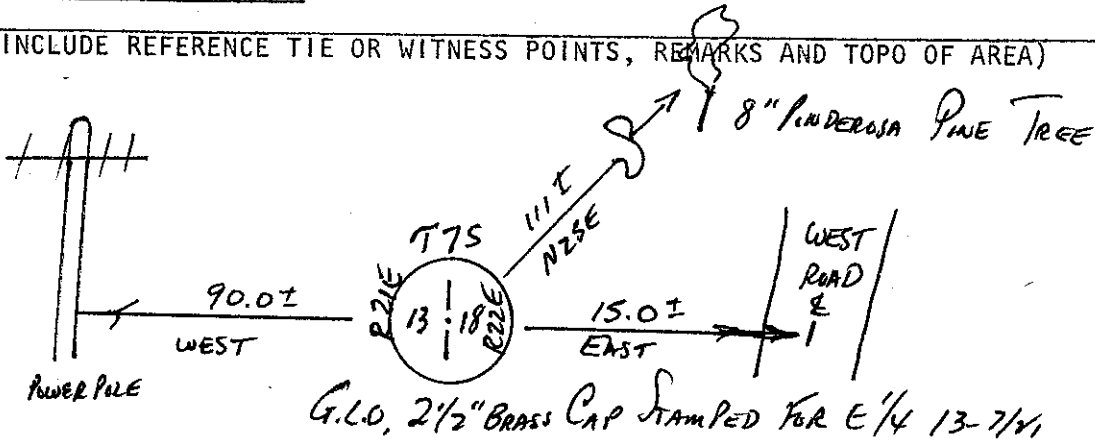
FOUND 2 1/2" BRASS CAP STAMPED G.L.O. FOR E 1/4 SEC. 13 7/4

NEAR WEST ROAD.

PHYSICAL DESCRIPTION OF MONUMENTS REBUILT OR PERPETUATED:

CALIFORNIA COORDINATE SYSTEM ORDER: FIRST () SECOND () THIRD ()
STATIONS USED: NOS (USC & GS) () STATE () COUNTY () OTHER () STATION _____
STATION _____ ZONE _____ ELEVATION _____ NORTHINGS (Y) _____
EASTINGS (X) _____

SKETCH: (INCLUDE REFERENCE TIE OR WITNESS POINTS, REMARKS AND TOPO OF AREA)



THIS CORNER LIES JUST WEST OF E OF THE WEST ROAD, MARKED BY RED STEEL FENCEPOST, AND AN ACCESS ROAD GOES IN JUST N.W. OF THE CORNER TO THE TRAINER "80" ACRES.

SURVEYOR'S CERTIFICATE

THIS CORNER RECORD WAS PREPARED BY ME
UNDER MY DIRECTION IN CONFORMANCE
WITH THE LAND SURVEYORS ACT ON 19/11/77
L. M. JENSEN 19 77

SIGNED

L.S. or R.C.E. NO. L.S. 4261

NO. 4261

SEAL

COUNTY SURVEYOR'S CERTIFICATE

THE CORNER RECORD WAS RECEIVED 5-20-77 AND EXAMINED
AND FILED May 20 1977

BY: A. Grote

TITLE: County Engineer

DOCUMENT NO. 77-09-07

STATEMENT ON BACK OF SHEET

YES () NO ()

