

CORNER RECORD

County of MADERA T. 7 S R. ~~22 E~~ 21 E MDB 1 Meridian California

Corner Type: Govt. Corner Meander Rancho Other

Corner Identification NE 1/2 1/2 Date of Visit MARCH 19 76



Corner Left as Found Found and Tagged Reestablished Obliterated Corner Rebuilt

Physical Description of Corner Found; Evidence and Method used to Identify or reestablish
15640 BRASS CAP IN 1/2" IRON PIPE AT FENCE INTERSECTION

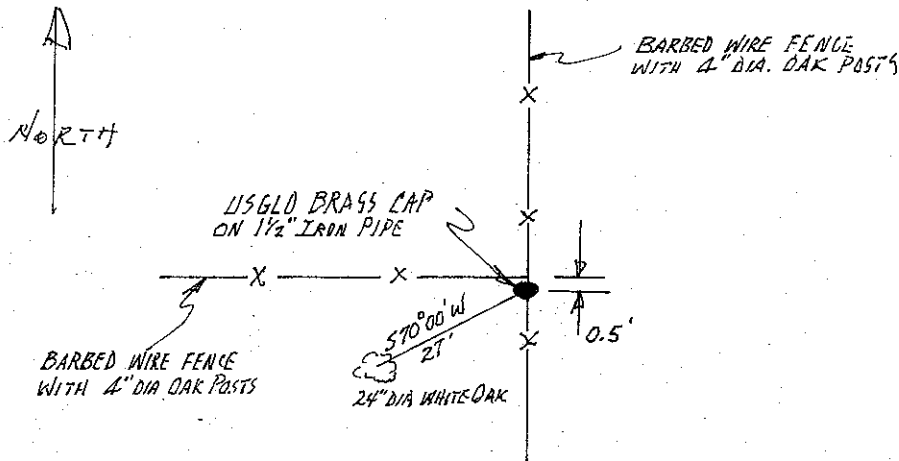
Physical Description of Monuments Rebuilt or Perpetuated

California Coordinate System Order: First Second Third

Stations used: NOS (USC & GS) State County Other Station _____ Station _____

Zone _____ Elevation _____ Northings (Y) _____ Eastings (X) _____

SKETCH: (Include reference tie or witness points, remarks and topo of area)



SURVEYOR'S CERTIFICATE

This corner record was prepared by me or under my direction in conformance with the Land Surveyors Act on APRIL 19 76.

Signed: Joseph C. Smith
 L.S. or R.C.E. No.:

COUNTY SURVEYOR'S CERTIFICATE

The Corner Record was received Sept. 16 19 76 and examined and filed Sept 22 19 76.

By: A. Grote
 Title County Engineer

Document No. 76.26.1