

CORNER RECORD

COUNTY OF Madara T. 75 P. 21E MD MERIDIAN CALIF.

CORNER TYPE: GOV'T CORNER MEANDER RANCHO CONTROL OTHER

CORNER IDENTIFICATION --- DATE OF VISIT SEPT. 1 19 74



1/4 Cor. Sec. 11, T. 75, R. 21E, M.D.B. & M.

CORNER -- LEFT AS FOUND FOUND & TAGGED REESTABLISHED OBLITERATED CORNER
REBUILT

PHYSICAL DESCRIPTION OF CORNER FOUND; EVIDENCE & METHOD USED TO IDENTIFY OR REESTABLISH:

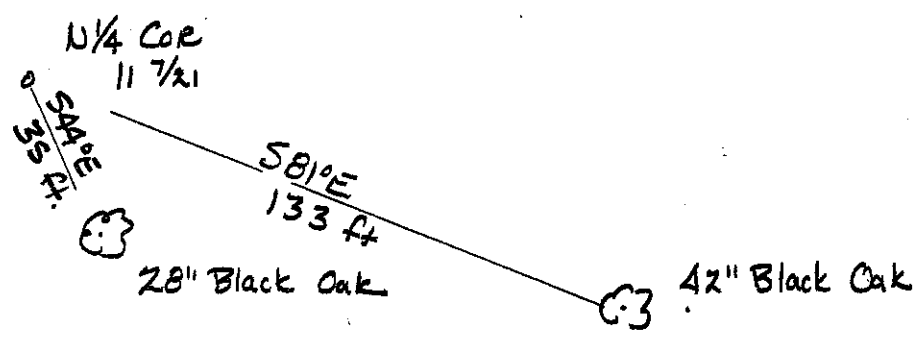
Found 1 1/2" iron pipe in rock mound

PHYSICAL DESCRIPTION OF MONUMENTS REBUILT OR PERPETUATED:

Accepted pipe and tagged LS4126

CALIFORNIA COORDINATE SYSTEM ORDER: FIRST SECOND THIRD
STATIONS USED: NOS (USC & GS) STATE COUNTY OTHER STATION _____
STATION _____ ZONE _____ ELEVATION _____ NORTHINGS (Y) _____
EASTINGS (X) _____

SKETCH: (INCLUDE REFERENCE TIE OR WITNESS POINTS, REMARKS AND TOPO OF AREA)



SURVEYOR'S CERTIFICATE

THIS CORNER RECORD WAS PREPARED BY ME OR UNDER MY DIRECTION IN CONFORMANCE WITH THE LAND SURVEYORS ACT ON Oct 1 19 74



SIGNED: _____
L.S. or R.C.E. No: LS4126

COUNTY SURVEYOR'S CERTIFICATE

THE CORNER RECORD WAS RECEIVED Oct. 25 1974 and examined and filed Oct. 28, 1974
BY: Albert O. Grote
TITLE: County Engineer

DOCUMENT No. 74-27-1
STATEMENT ON BACK OF SHEET
YES NO