

CORNER RECORD

COUNTY OF MADERA T. 7S R. 7E MERIDIAN CALIF.

CORNER TYPE: GOV'T CORNER MEANDER RANCHO CONTROL OTHER

CORNER IDENTIFICATION --- DATE OF VISIT DEC. 30 19 74



CENTER OF SECTION 11 TOWNSHIP 7 SOUTH RANGE 7 E.

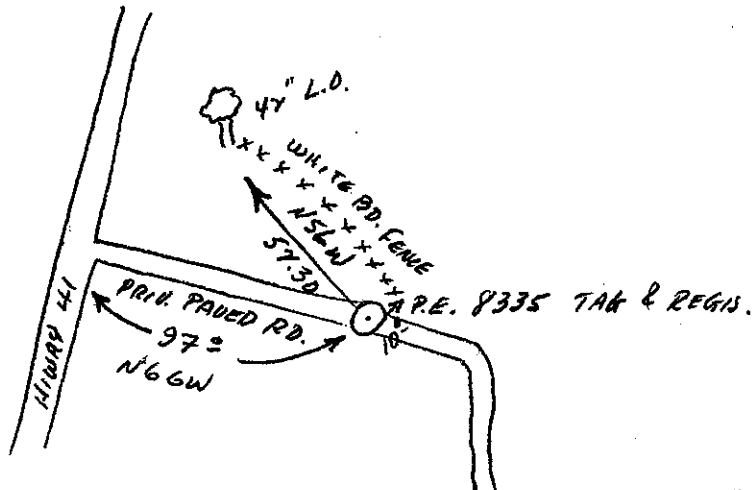
CORNER -- LEFT AS FOUND FOUND & TAGGED REESTABLISHED OBLITERATED CORNER REBUILT

PHYSICAL DESCRIPTION OF CORNER FOUND; EVIDENCE & METHOD USED TO IDENTIFY OR, REESTABLISH: A HUB-TACK & REGISTRATION TAG SET IN 2 in. iron pipe in PAVEMENT OF PRIVATE ROAD.
THIS PRIVATE ROAD JUST OUTSIDE OAKHORST, INTERSECTING HWY 41.
(SEE SKETCH)

PHYSICAL DESCRIPTION OF MONUMENTS REBUILT OR PERPETUATED:

CALIFORNIA COORDINATE SYSTEM ORDER: FIRST SECOND THIRD
STATIONS USED: NOS (USC & GS) STATE COUNTY OTHER STATION _____
STATION _____ ZONE _____ ELEVATION _____ NORTHINGS (Y) _____
EASTINGS (X) _____

SKETCH: (INCLUDE REFERENCE TIE OR WITNESS POINTS, REMARKS AND TOPO OF AREA)



SURVEYOR'S CERTIFICATE

THIS CORNER RECORD WAS PREPARED BY ME OR UNDER MY DIRECTION IN CONFORMANCE WITH THE LAND SURVEYORS ACT

Jan 2 1975

CHARLES VICTOR

SKDRA

SIGNED:

L.S. or R.C.E. No. NO. 425 4026

SEAL
STATE OF CALIFORNIA

COUNTY SURVEYOR'S CERTIFICATE

THE CORNER RECORD WAS RECEIVED Jan.

3 19 74 and examined & filed.

BY: A. O. Grate

TITLE: County Engineer

DOCUMENT No. 75-6-1

STATEMENT ON BACK OF SHEET

YES NO