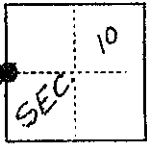


CORNER RECORD

COUNTY OF Madera T. 7 S. R. 21 E. M.D.B.& MERIDIAN CALIFORNIA

CORNER TYPE: GOV'T. CORNER MEANDER RANCHO CONTROL OTHER
CORNER IDENTIFICATION — DATE OF VISIT November 15 1976



West quarter corner Section 10, T.7S., R.21E., M.D.B.&M.

CORNER — LEFT AS FOUND FOUND AND TAGGED REESTABLISHED OBLITERATED CORNER REBUILT

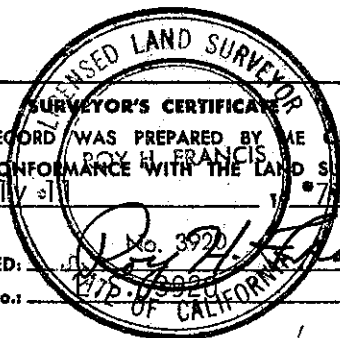
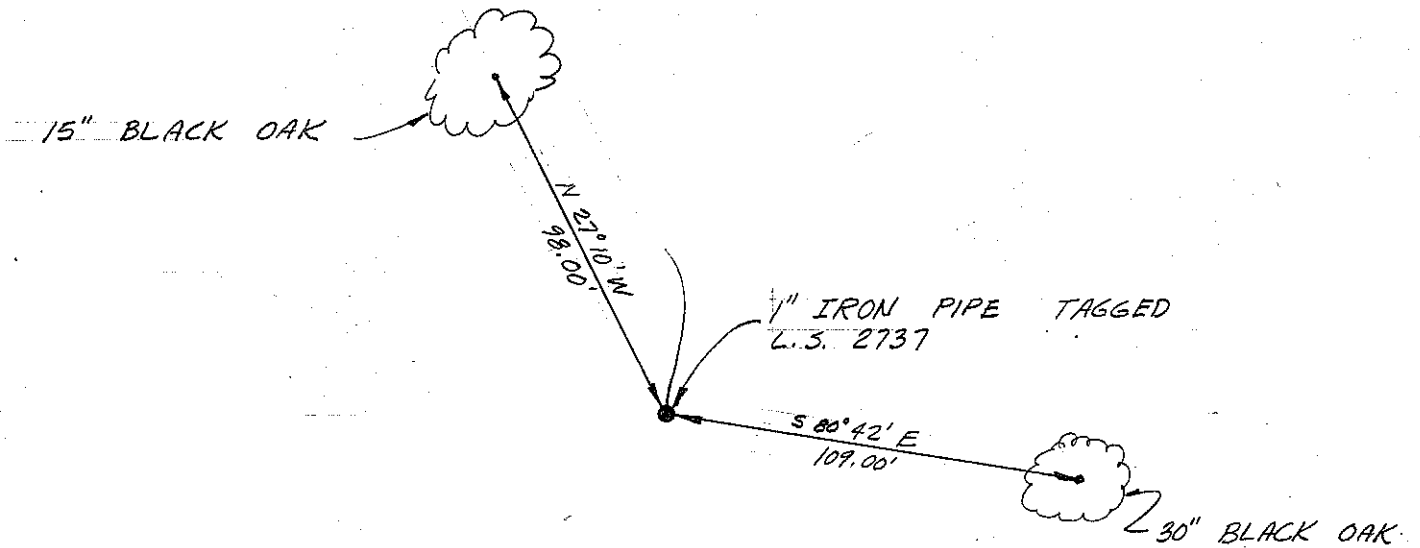
PHYSICAL DESCRIPTION OF CORNER FOUND; EVIDENCE AND METHOD USED TO IDENTIFY OR REESTABLISH

Found 1" iron pipe in rock mound tagged L.S. 2737

PHYSICAL DESCRIPTION OF MONUMENTS REBUILT OR PERPETUATED

CALIFORNIA COORDINATE SYSTEM ORDER: FIRST SECOND THIRD
STATIONS USED: NGS (USC & GS) STATE COUNTY OTHER STATION _____ STATION _____
ZONE _____ ELEVATION _____ NORTHINGS (Y) _____ EASTINGS (X) _____

SKETCH: (Include reference tie or witness points, remarks and topo of area)



THIS CORNER RECORD WAS PREPARED BY ME OR UNDER MY DIRECTION IN CONFORMANCE WITH THE LAND SURVEYORS ACT ON July 11 1977

SIGNED: Roy H. Francis
L.S. or R.C.E. No. 3920

COUNTY SURVEYOR'S CERTIFICATE

THE CORNER RECORD WAS RECEIVED 8-3 1977 AND EXAMINED AND FILED 8-4 1977

BY: A. Grote
TITLE: County Engineer

DOCUMENT No. 77-12-01

STATEMENT ON BACK OF SHEET

YES NO