

# CORNER RECORD

City of Oakhurst Document Number \_\_\_\_\_  
County of Madera, California  
Brief Legal Description Lot 6A of Division of Lot 6 of Pike Ranch, according to the Lot Split Map  
recorded in Book 09 of Maps at Page 40, MCR

### CORNER TYPE

### COORDINATES (Optional)

Section 5  
T7S, R21E,  
MDM

Government Corner  Control   
Meander  Property   
Rancho  Other   
Survey 04/05/10

N. \_\_\_\_\_  
E. \_\_\_\_\_  
Zone \_\_\_\_\_ NAD27  NAD83  
NAD83 Epoch \_\_\_\_\_  
Elevation \_\_\_\_\_ Date of  
Vert Datum: NGVD29  NADV88   
Meas. Units: Metric  Imperial

Corner - Left as found  Found and tagged  Established  Reestablished  Rebuilt

### Identification and type of corner found: Evidence used to identify or procedure used to establish or reestablish the corner:

Found and accepted 2" x 2" redwood stake, or monument as noted, per map of Division of Lot 6 of Pike Ranch. Reestablished missing corner monuments using those found monuments and bearings and distances as shown on the record map (See sketch, Page 2)

### A description of the physical condition of the monument as found and as set or reset:

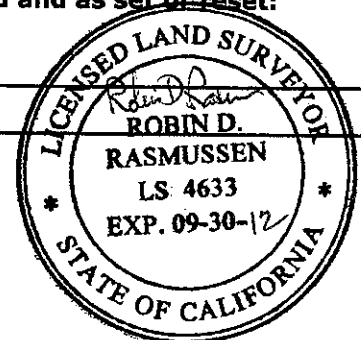
Set concrete nail and brass tag LS4633 flush in concrete.

(See sketch, Page 2)

### SURVEYOR'S STATEMENT

This Corner Record was prepared by me or under my direction in conformance with the Land Surveyor's Act on January 24, 2012

Signed Robin D. Rasmussen PLS No: 4633



### COUNTY SURVEYOR'S STATEMENT

This Corner Record was received 2/10 2012 and examined

and filed 2/20 2012

Signed David M. McGlasson PLS No: 6968

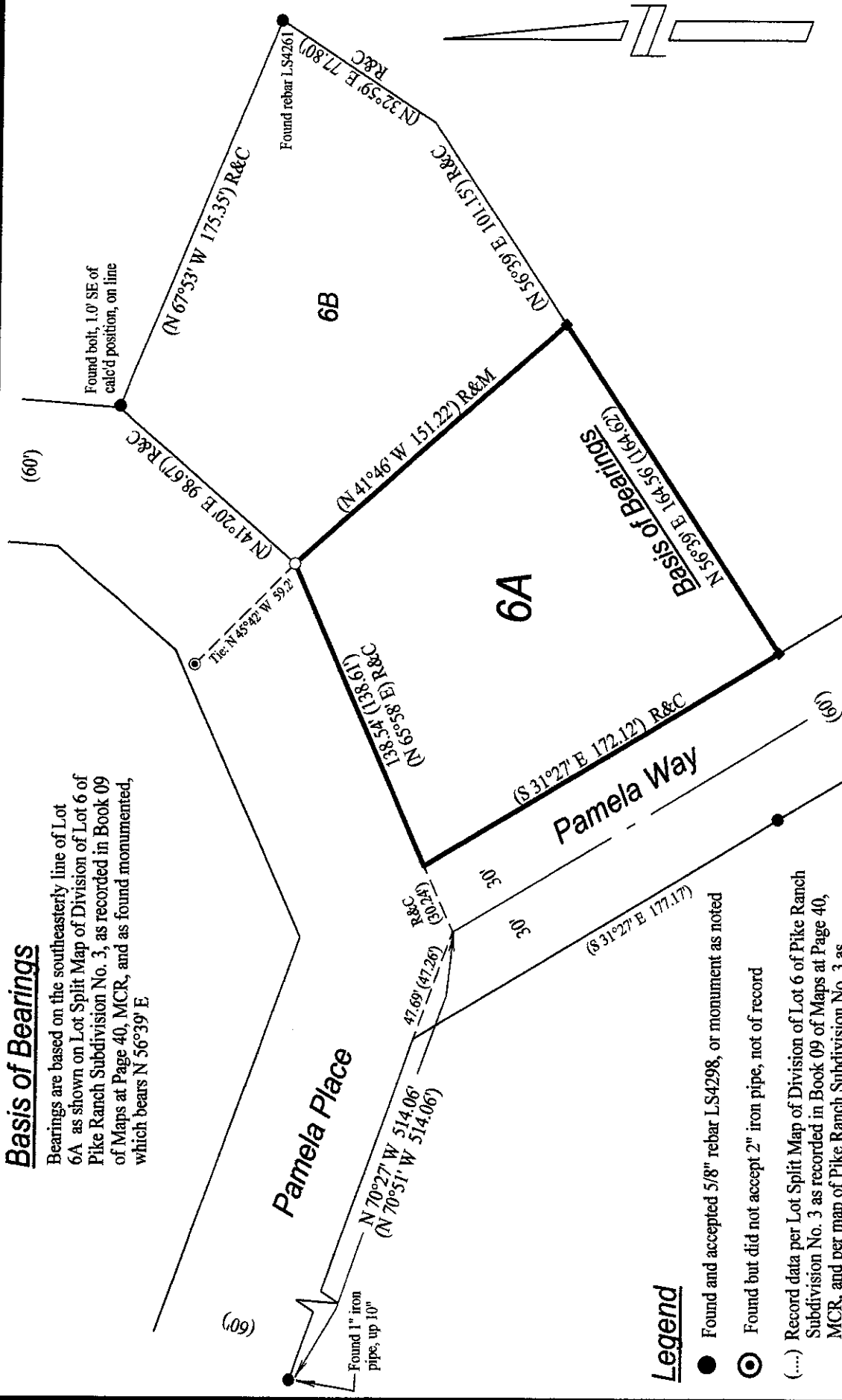
Title Acting County Surveyor



County Surveyor's Comment \_\_\_\_\_

### Basis of Bearings

Bearings are based on the southeasterly line of Lot 6A as shown on Lot Split Map of Division of Lot 6 of Pike Ranch Subdivision No. 3, as recorded in Book 09 of Maps at Page 40, MCR, and as found monumented, which bears N 56°39' E.



### Legend

- Found and accepted 5/8" rebar LS4298, or monument as noted
- ⊙ Found but did not accept 2" iron pipe, not of record
- (....) Record data per Lot Split Map of Division of Lot 6 of Pike Ranch Subdivision No. 3 as recorded in Book 09 of Maps at Page 40, MCR, and per map of Pike Ranch Subdivision No. 3 as recorded in Book 08 of Maps at Pages 1 and 2, MCR
- Set concrete nail with brass tag LS4633 in concrete
- Found and accepted 2" x 2" redwood stake
- R&C Data calculated in agreement with record source cited
- R&M Data measured in agreement with record source cited

# CORNER RECORD

Of Lot 6A of Division of Lot 6 of Pike Ranch, according to the Lot Split Map recorded in Book 09 of Maps at Page 40, MCR  
Madera County  
California