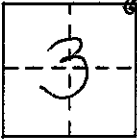


NW SEC 2, T7S, R21E

CORNER RECORD

COUNTY OF MADERA T. 7S R. 21E MT DIABLO MERIDIAN CALIFORNIA
 CORNER TYPE: GOV'T. CORNER MEANDER RANCHO CONTROL OTHER
 CORNER IDENTIFICATION - DATE OF VISIT APRIL 8 19 90



CORNER - LEFT AS FOUND FOUND AND TAGGED REESTABLISHED OBLITERATED CORNER REBUILT

PHYSICAL DESCRIPTION OF CORNER FOUND; EVIDENCE AND METHOD USED TO IDENTIFY OR REESTABLISH

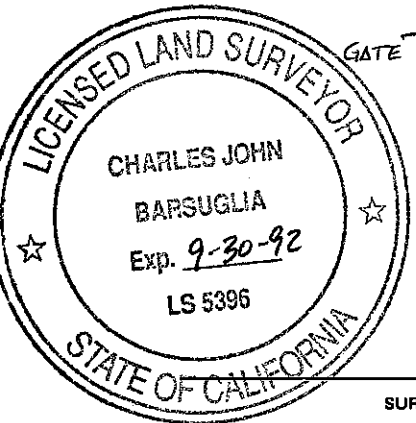
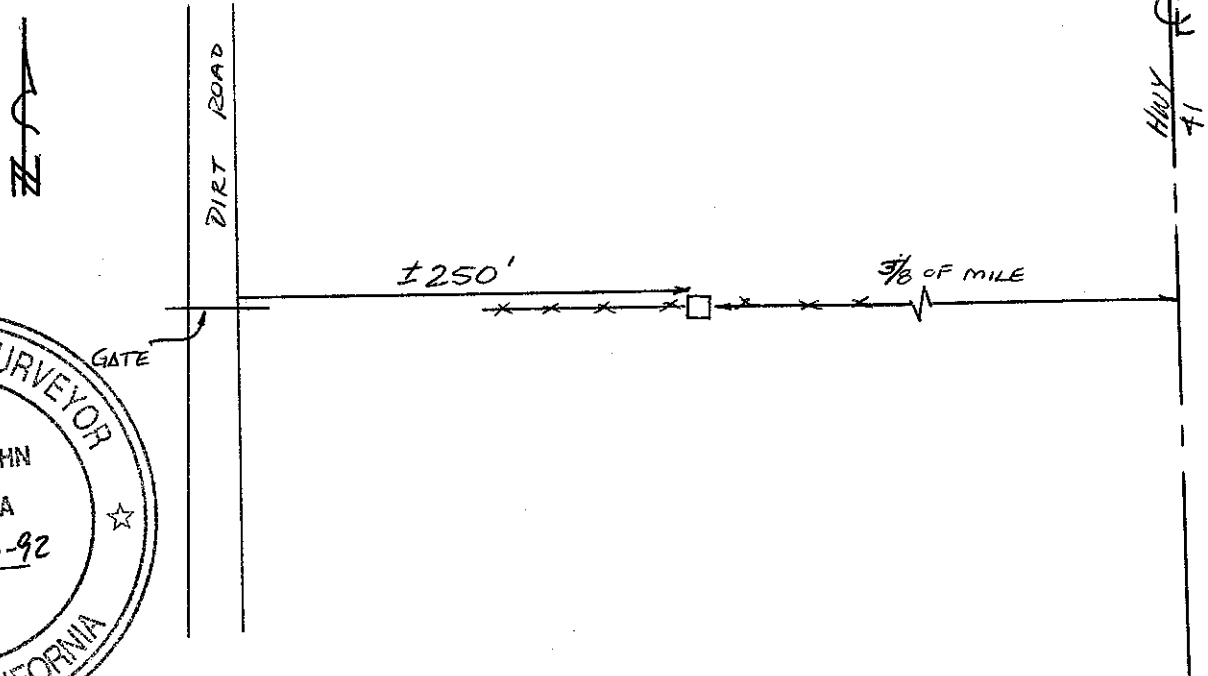
*FOUND ORIGINAL REDWOOD POST
 SCRIBED ON SIDES
 INFORMATION FROM PARCEL MAP #2344
 UP 15' TAGGED 4261*

PHYSICAL DESCRIPTION OF MONUMENTS REBUILT OR PERPETUATED

CALIFORNIA COORDINATE SYSTEM ORDER: FIRST SECOND THIRD
 STATIONS USED: NGS (USC & GS) STATE COUNTY OTHER STATION _____ STATION _____
 ZONE _____ ELEVATION _____ NORTHINGS (Y) _____ EASTINGS (X) _____

SKETCH: (Include reference tie or witness points, remarks and topo of area)

HEAVY BRUSH



SURVEYOR'S CERTIFICATE
 THIS CORNER RECORD WAS PREPARED BY ME OR UNDER MY DIRECTION IN CONFORMANCE WITH THE LAND SURVEYORS ACT ON 5-24 19 90 FOR THE STATE OF CALIFORNIA

SIGNED: Charles Barsuglia
 L.S. or R.C.E. No.: 5396

SEAL

COUNTY SURVEYOR'S CERTIFICATE
 THE CORNER RECORD WAS RECEIVED _____ 19____ AND EXAMINED AND FILED 6-18 19 90 BY: Dore Stinson TITLE: DOWE STINSON MADERA COUNTY ENGINEER

DOCUMENT No. _____ STATEMENT ON BACK OF SHEET YES NO