

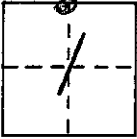
N 1, T75, R21E

CORNER RECORD

COUNTY OF MADERA T. 75 R. 21E MT DIABLO MERIDIAN CALIFORNIA

CORNER TYPE: GOV'T. CORNER MEANDER RANCHO CONTROL OTHER

CORNER IDENTIFICATION - DATE OF VISIT APRIL 19 1990



CORNER - LEFT AS FOUND FOUND AND TAGGED REESTABLISHED OBLITERATED CORNER REBUILT

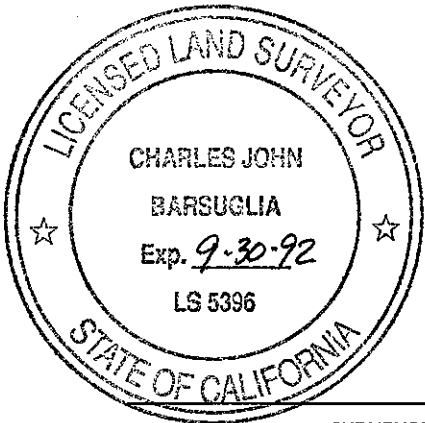
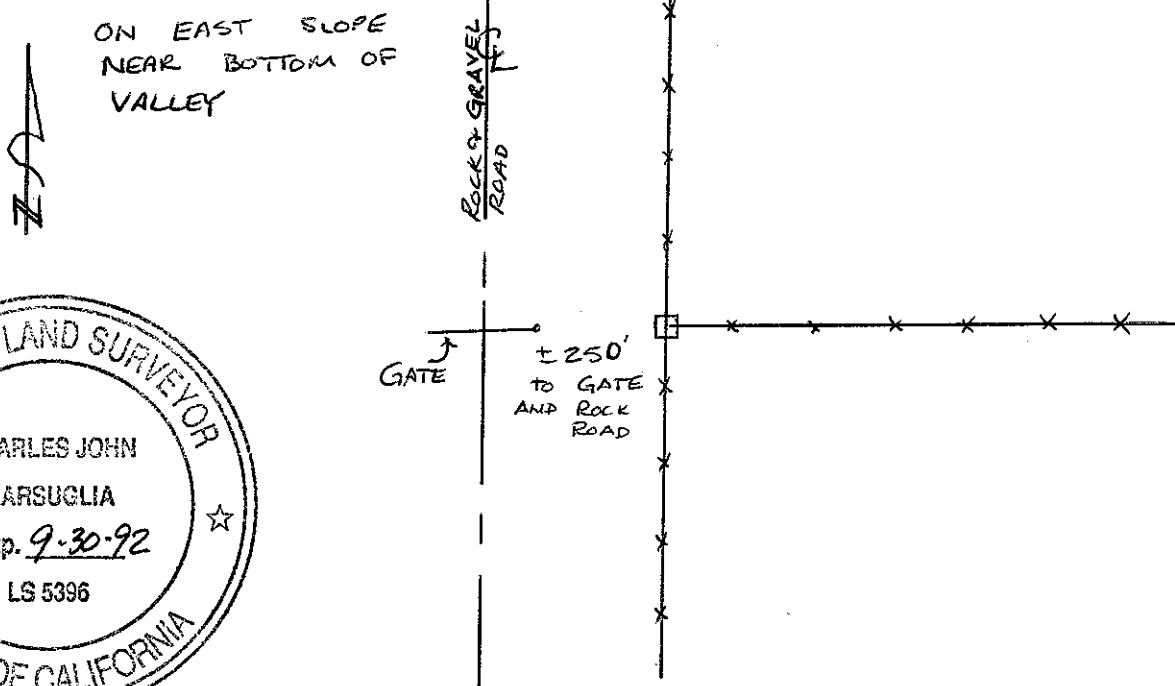
PHYSICAL DESCRIPTION OF CORNER FOUND; EVIDENCE AND METHOD USED TO IDENTIFY OR REESTABLISH

*FOUND 3/4" I.P. TAGGED L.S. 4261-JENSEN -
UP 10' IN MOUND OF ROCKS
IN FENCE LINE NORTH & SOUTH, & EAST*

PHYSICAL DESCRIPTION OF MONUMENTS REBUILT OR PERPETUATED

CALIFORNIA COORDINATE SYSTEM ORDER: FIRST SECOND THIRD
STATIONS USED: NGS (USC & GS) STATE COUNTY OTHER STATION _____ STATION _____
ZONE _____ ELEVATION _____ NORTHINGS (Y) _____ EASTINGS (X) _____

SKETCH: (Include reference tie or witness points, remarks and topo of area)



SURVEYOR'S CERTIFICATE
THIS CORNER RECORD WAS PREPARED BY ME OR UNDER MY DIRECTION IN CONFORMANCE WITH THE LAND SURVEYORS ACT ON 5-29 19 90 FOR THE STATE OF CALIFORNIA

SIGNED: Charles Barsuglia
L.S. or R.C.E. No.: 5396

SEAL

COUNTY SURVEYOR'S CERTIFICATE
THE CORNER RECORD WAS RECEIVED _____ 19 _____ AND EXAMINED AND FILED 6-18 19 90 BY: Dave Stinson TITLE: Madera Co. Engr.

DOCUMENT No. _____

STATEMENT ON BACK OF SHEET

YES NO