

CORNER RECORD

County of MADERA T. 7 S R. 20 E M.D.B.E Meridian California

Corner Type: Govt. Corner Meander Rancho Other

Corner Identification _____ Date of Visit MAY 19, 19 75



W 1/4 COR. SEC. 36

Corner Left as Found Found and Tagged Reestablished Obliterated Corner Rebuilt

Physical Description of Corner Found; Evidence and Method used to Identify or reestablish
FND. 1" I.P. R.C.E. 16995 IN ROCK. MND. WITH METAL FENCE POST ADJACENT TO.

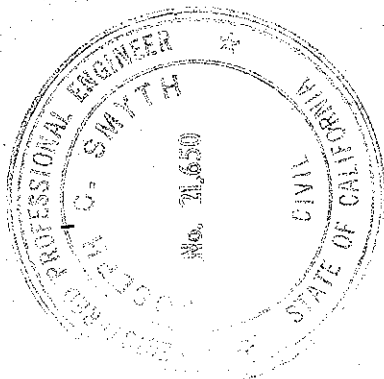
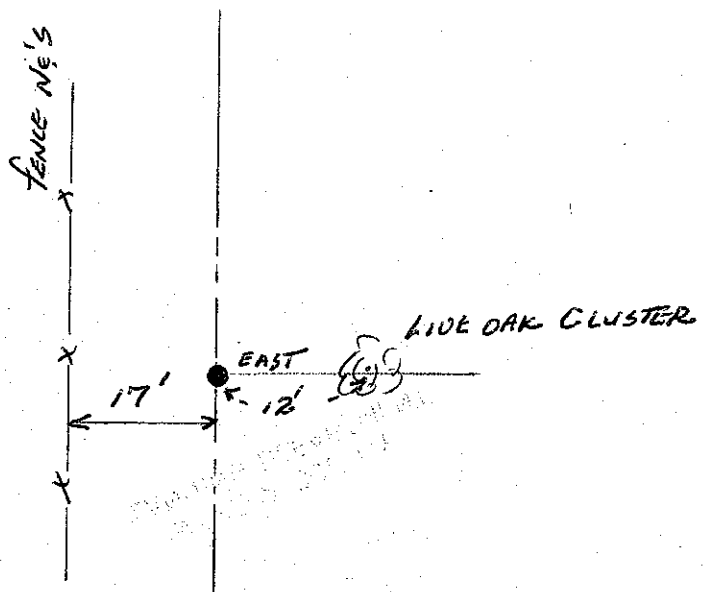
Physical Description of Monuments Rebuilt or Perpetuated

California Coordinate System Order: First Second Third

Stations used: NOS (USC & GS) State County Other Station _____ Station _____

Elevation _____ Northings (Y) _____ Eastings (X) _____

ATCH: (Include reference tie or witness points, remarks and topo of area)



SURVEYOR'S CERTIFICATE

This corner record was prepared by me or under my direction in conformance with the Land Surveyors Act on JULY 20, 19 75.

Signed: Joseph C. Smyth REC 21650

L.S. or R.C.E. No.:

COUNTY SURVEYOR'S CERTIFICATE

The Corner Record was received July 24 Aug 11, 1975 19 and examined and filed Aug 11 19 75.

By: A. O. Grote
Title County Engineer

Document No. 75-27-01