

CORNER RECORD

County of MADERA T. 7S R. 20E MDB & M Meridian California

Corner Type: Govt. Corner  Meander  Rancho  Other

Corner Identification W/4 COR Date of Visit MAY 1975

SEC 35 T7S R20E



Corner  Left as Found  Found and Tagged  Reestablished  Obliterated Corner  Rebuilt

Physical Description of Corner Found; Evidence and Method used to Identify or reestablish  
1" IRON PIPE WITH BRASS CAP TAGGED RCE 5982 - PREVIOUSLY FOUND & ACCEPTED PER MADERA COUNTY PARCEL MAP 747 - (PROVOST & PRITCHARD)

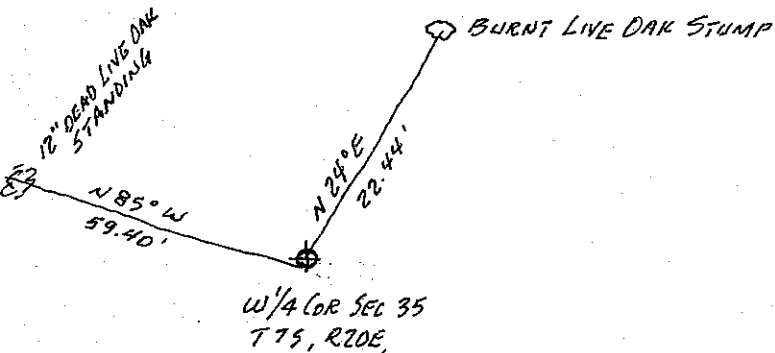
Physical Description of Monuments Rebuilt or Perpetuated  
1" I.P. TAGGED RCE 5982

California Coordinate System Order: First  Second  Third

Stations used: NOS (USC & GS)  State  County  Other  Station \_\_\_\_\_ Station \_\_\_\_\_

Zone \_\_\_\_\_ Elevation \_\_\_\_\_ Northings (Y) \_\_\_\_\_ Eastings (X) \_\_\_\_\_

ATCH: (Include reference tie or witness points, remarks and topo of area)



SEE ALSO PM 1099

SURVEYOR'S CERTIFICATE

This corner record was prepared by me or under my direction in conformance with the Land Surveyors Act on MAY 1975.

Signed: Joseph C. Smyth  
 L.S. or R.C.E. No.: RCE 21650

COUNTY SURVEYOR'S CERTIFICATE

The Corner Record was received 4/23 1976 and examined and filed April 30 1976.  
 By: A.O. Inote  
 Title: County Engineer  
 Document No. 76-10-1