

CORNER RECORD

COUNTY OF MADERA T. T. 7 S. R. 20 E. M. D. M. MERIDIAN CALIFORNIA
 CORNER TYPE: GOV'T. CORNER MEANDER RANCHO CONTROL OTHER
 CORNER IDENTIFICATION - DATE OF VISIT NOVEMBER 1976



S 1/4

CORNER - LEFT AS FOUND FOUND AND TAGGED REESTABLISHED OBLITERATED CORNER REBUILT

PHYSICAL DESCRIPTION OF CORNER FOUND: EVIDENCE AND METHOD USED TO IDENTIFY OR REESTABLISH

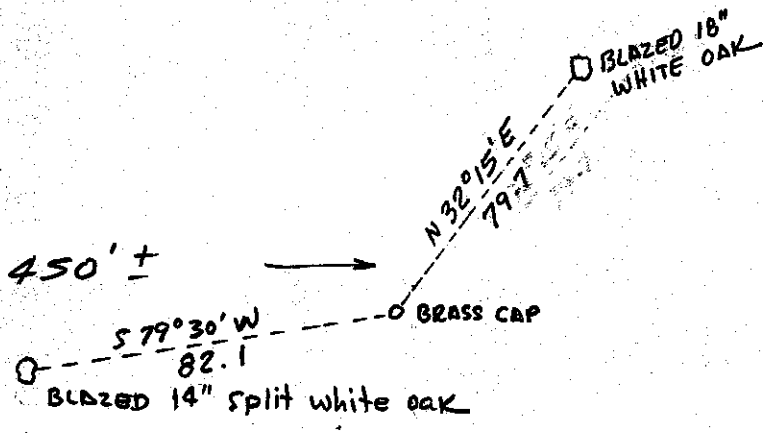
1 1/2" galvanized iron pipe ~~marked~~ with brass cap marked for 1/4 cor. and stamped "LS 3722"
 Large Rock Mound.

PHYSICAL DESCRIPTION OF MONUMENTS REBUILT OR PERPETUATED

NONE

CALIFORNIA COORDINATE SYSTEM ORDER: FIRST SECOND THIRD
 STATIONS USED: NGS (USC & GS) STATE COUNTY OTHER STATION _____ STATION _____
 ZONE _____ ELEVATION _____ NORTHINGS (Y) _____ EASTINGS (X) _____

SKETCH: (Include reference tie or witness points, remarks and topo of area)

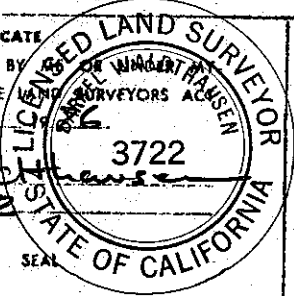


See Parcel Map #453

SURVEYOR'S CERTIFICATE

THIS CORNER RECORD WAS PREPARED BY _____
 IN CONFORMANCE WITH THE _____
 ON NOV 23

SIGNED: D. Walchhausen
 L.S. or R.C.E. No.: L.S. 3722



COUNTY SURVEYOR'S CERTIFICATE

THE CORNER RECORD WAS RECEIVED NOV 30 1976
 AND EXAMINED AND FILED DEC 6 1976

BY: A. Grato
 TITLE: County Engineer
 DOCUMENT No. 76-36-04

STATEMENT ON BACK OF SHEET YES NO