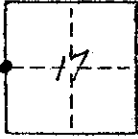


CORNER RECORD

COUNTY OF Madera T. 7 S. R. 20 E. MDM MERIDIAN CALIFORNIA
CORNER TYPE: GOV'T. CORNER MEANDER RANCHO CONTROL OTHER
CORNER IDENTIFICATION - DATE OF VISIT Sept 19 76

W 1/4 COR
Sec 17



CORNER - LEFT AS FOUND FOUND AND TAGGED REESTABLISHED OBLITERATED CORNER REBUILT

PHYSICAL DESCRIPTION OF CORNER FOUND: EVIDENCE AND METHOD USED TO IDENTIFY OR REESTABLISH

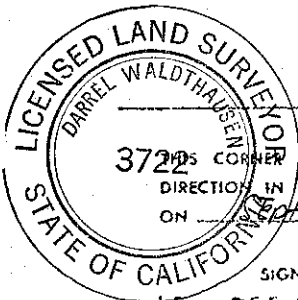
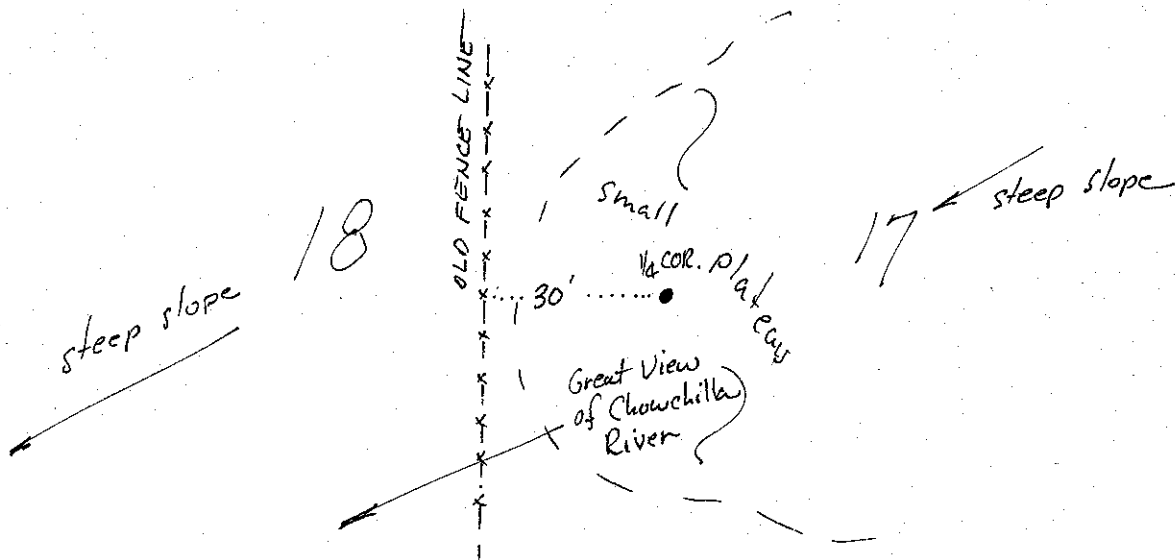
Nothing Found therefore cor was set at prorated position between section corners.

PHYSICAL DESCRIPTION OF MONUMENTS REBUILT OR PERPETUATED

Set 1 1/2" iron pipe tagged "LS. 3722" in rock mound (large)

CALIFORNIA COORDINATE SYSTEM ORDER: FIRST SECOND THIRD
STATIONS USED: NGS (USC & GS) STATE COUNTY OTHER STATION _____ STATION _____
ZONE _____ ELEVATION _____ NORTHINGS (N) _____ EASTINGS (E) _____

SKETCH: (Include reference tie or witness points, remarks and topo of area)



SURVEYOR'S CERTIFICATE

3722 CORNER RECORD WAS PREPARED BY ME OR UNDER MY DIRECTION IN CONFORMANCE WITH THE LAND SURVEYORS ACT ON Sept 29 19 76

SIGNED: D. Waldthausen
L.S. or R.C.E. No.: 3722

SEAL

COUNTY SURVEYOR'S CERTIFICATE

THE CORNER RECORD WAS RECEIVED 10-4 19 76 AND EXAMINED AND FILED Oct 6 19 76

BY: G. Foster
TITLE: County Engineer
DOCUMENT No. 76-298

STATEMENT ON BACK OF SHEET

YES NO