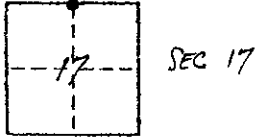


**CORNER RECORD**

COUNTY OF MADERA T. 7 S. R. 20 E. MDM MERIDIAN CALIFORNIA  
 CORNER TYPE: GOVT. CORNER  MEANDER  RANCHO  CONTROL  OTHER   
 CORNER IDENTIFICATION — DATE OF VISIT Sept 19 76



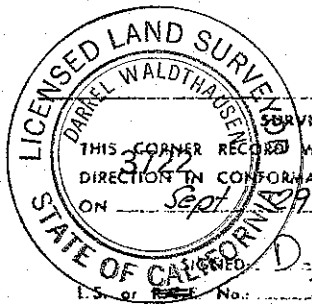
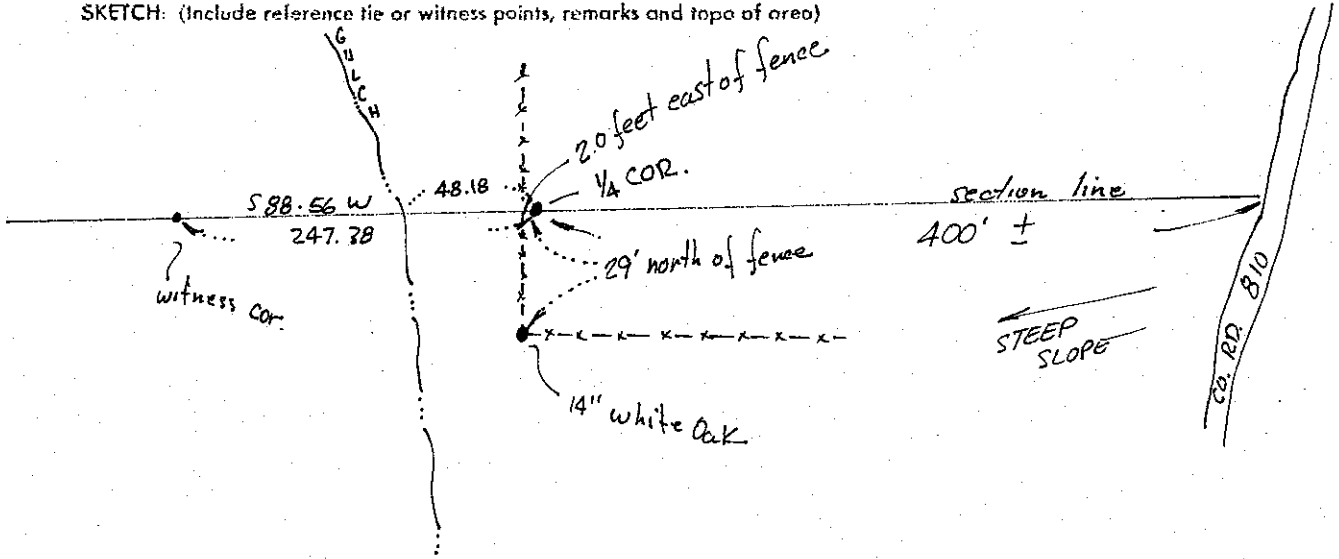
CORNER — LEFT AS FOUND  FOUND AND TAGGED  REESTABLISHED OBLITERATED CORNER  REBUILT

PHYSICAL DESCRIPTION OF CORNER FOUND; EVIDENCE AND METHOD USED TO IDENTIFY OR REESTABLISH  
ORIG. BEARING TREES NOT FOUND. Therefore cor was set on the section line 48.18 feet east of gulch as called for in ORIG. Govt field notes of 1874

PHYSICAL DESCRIPTION OF MONUMENTS REBUILT OR PERPETUATED  
Set 2 1/2" iron pipe and tag 'LS 3722' in rock mound as shown in sketch below. Witness cor (1 1/2" pipe) bears S 88.56 W 247.38

CALIFORNIA COORDINATE SYSTEM ORDER: FIRST  SECOND  THIRD   
 STATIONS USED: NGS (USC & GS)  STATE  COUNTY  OTHER  STATION \_\_\_\_\_ STATION \_\_\_\_\_  
 ZONE \_\_\_\_\_ ELEVATION \_\_\_\_\_ NORTHINGS (Y) \_\_\_\_\_ EASTINGS (X) \_\_\_\_\_

SKETCH: (Include reference tie or witness points, remarks and topo of area)



**SURVEYOR'S CERTIFICATE**  
 THIS CORNER RECORD WAS PREPARED BY ME OR UNDER MY DIRECTION IN CONFORMANCE WITH THE LAND SURVEYORS ACT ON Sept 19 76  
 BY: D. Waldthausen  
 L.S. No. 3722

**COUNTY SURVEYOR'S CERTIFICATE**  
 THE CORNER RECORD WAS RECEIVED 10.4 19 76 AND EXAMINED AND FILED Oct 6 19 76  
 BY: A. Prote  
 TITLE: County Engineer  
 DOCUMENT No. 76-29-1

SEAL

STATEMENT ON BACK OF SHEET YES  NO