

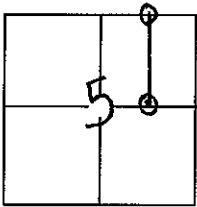
# CORNER RECORD

Document Number \_\_\_\_\_

City of (UNINCORPORATED AREA)

County of Madera, California

Brief Legal Description The NW corner of Lot No. 1, and the SW corner of the SE 1/4 of the NE 1/4 of Section 5, T.7S., R.20E., M.D.B & M.



**CORNER TYPE**

Government Corner  Control   
 Meander  Property   
 Rancho  Other

Date of Survey 11/30/2010

**COORDINATES(Optional)**

N. \_\_\_\_\_  
 E. \_\_\_\_\_  
 Zone \_\_\_\_\_ NAD27  NAD83   
 NAD83 Epoch \_\_\_\_\_  
 Elev. \_\_\_\_\_  
 Vert. Datum: NGVD29  NADV88   
 Meas. Units: Metric  Imperial

Corner - Left as found  Found and tagged  Established  Reestablished  Rebuilt

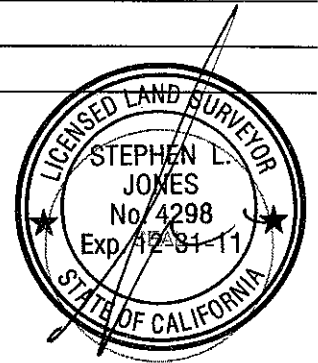
Identification and type of corner found: Evidence used to identify or procedure used to establish or reestablish the corner:  
Set 1/6 corners at the midpoint of the line between the N 1/4 corner and the NE corner of Section 5, 1/20; and the midpoint of the line between the C 1/4 corner and the E 1/4 corner. Positions per "Record of Survey for Gail Y. Jackson", recorded in Book 56, Page 18, Madera County Records.

A description of the physical condition of the monument as found and as set or reset:  
Set 5/8" rebar with yellow plastic cap, marked L.S. 4298

**SURVEYOR'S STATEMENT**

This Corner Record was prepared by me or under my direction in conformance with the Land Surveyor's Act on 11/30/10

Signed [Signature] P.L.S. or R.C.E. No.: LS. 4298



**COUNTY SURVEYOR'S STATEMENT**

This Corner Record was received DECEMBER 1, 2010 and examined and filed JANUARY 6, 2011

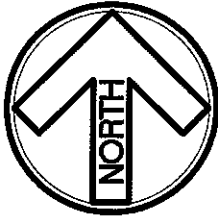
Signed David M. McGlasson P.L.S. or R.C.E. No.: 6968

Title ACTING COUNTY SURVEYOR

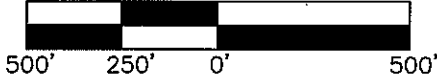
County Surveyor's Comment \_\_\_\_\_



# CORNER RECORD

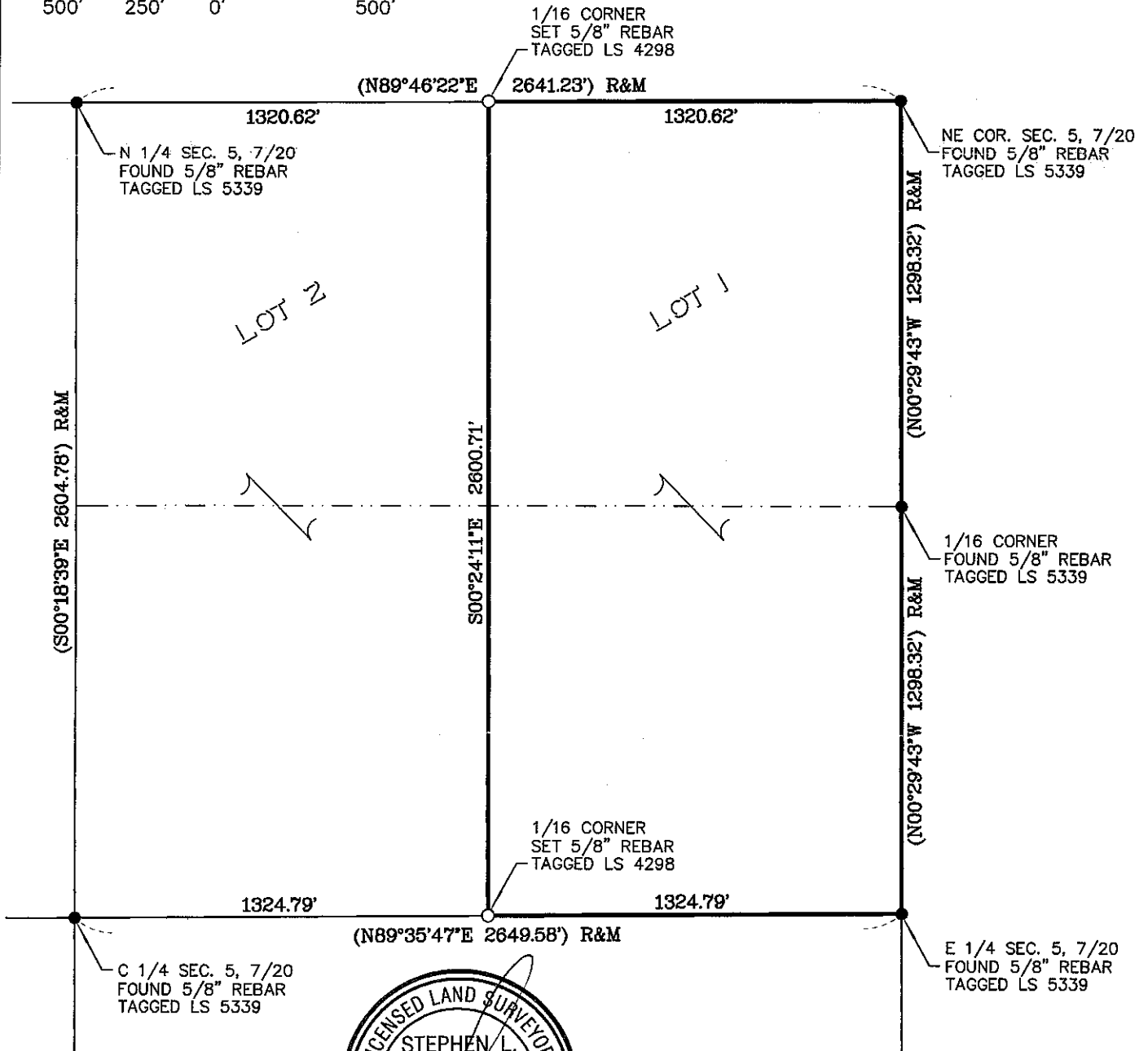


SCALE 1"=500'



## LEGEND

- FOUND MONUMENT (AS NOTED)
- SET 5/8" REBAR, LS 4298
- PROPERTY LINE
- ADJACENT PROPERTY LINE
- (...) RECORD OF SURVEY, RECORDED IN BOOK 56, PAGE 18, M.C.R.



JONES AND SNYDER SURVEYING  
P.O. BOX 2292, OAKHURST, CA  
(559)683-7661, LS 4298, LS 4727

DATE: DECEMBER 01, 2010  
JOB NO: 10-147  
DWG. FILE: 10-147CR  
DRAWN BY: RJD