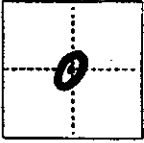


CORNER RECORD

COUNTY OF Madura T. 7S R. 20E. M.D.B. MERIDIAN CALIFORNIA

CORNER TYPE: GOVT. CORNER  MEANDER  RANCHO  CONTROL  OTHER

CORNER IDENTIFICATION — DATE OF VISIT 5-9-89 1989



C/4 3-7-20  
SET 3/4" I.P. & TAG L.J. 4261

CORNER — LEFT AS FOUND  FOUND AND TAGGED  REESTABLISHED OBLITERATED CORNER  REBUILT

PHYSICAL DESCRIPTION OF CORNER FOUND; EVIDENCE AND METHOD USED TO IDENTIFY OR REESTABLISH

SET BY INTERSECTION PER GOV. RULES.

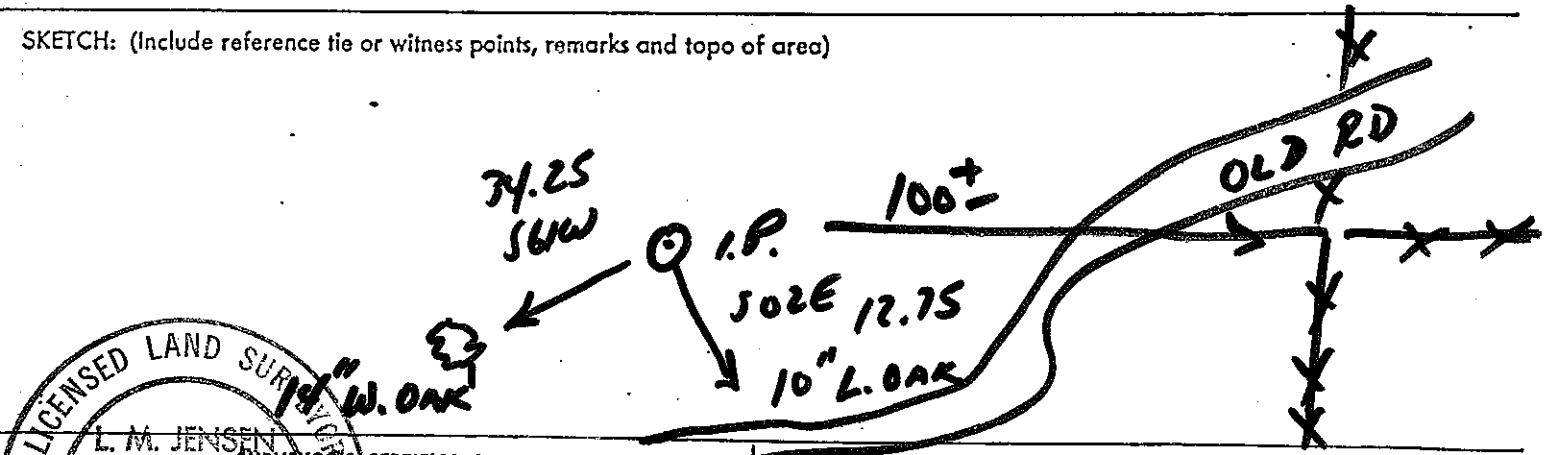
PHYSICAL DESCRIPTION OF MONUMENTS REBUILT OR PERPETUATED

SET 3/4" I.P. IN ROCK MOUND ON SOUTH SLOPE, JUST NORTH  
OF OLD ACCESS RD., 100 ± WEST OF OLD FENCE INTERSECTION.  
SET K-TAGS ON REF. TREES (SEE BELOW)

ALIFORNIA COORDINATE SYSTEM ORDER: FIRST  SECOND  THIRD   
STATIONS USED: NGS (USC & GS)  STATE  COUNTY  OTHER  STATION \_\_\_\_\_ STATION \_\_\_\_\_  
ZONE \_\_\_\_\_ ELEVATION \_\_\_\_\_ NORTHINGS (N) \_\_\_\_\_ EASTINGS (E) \_\_\_\_\_

(Fold)

SKETCH: (Include reference tie or witness points, remarks and topo of area)



LICENSED LAND SURVEYOR  
**L. M. JENSEN**  
SURVEYOR'S CERTIFICATE  
THIS CORNER RECORD WAS PREPARED BY ME OR UNDER MY  
DIRECTION IN CONFORMANCE WITH THE LAND SURVEYORS ACT  
ON NO. 4261 5-20-89 1989  
SIGNED [Signature]  
L.S. of CALIFORNIA

SEAL

COUNTY SURVEYOR'S CERTIFICATE  
THE CORNER RECORD WAS RECEIVED 5-  
AND EXAMINED AND FILED 5-23-  
BY: [Signature]  
TITLE: Co. Eng  
DOCUMENT No. \_\_\_\_\_  
STATEMENT ON BACK OF SHEET YES

