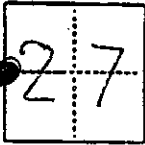


CORNER RECORD

CITY OF MADERA T. 7 R. 19 MERIDIAN CALIFORNIA

CORNER TYPE: GOV'T. CORNER MEANDER RANCHO CONTROL OTHER
CORNER IDENTIFICATION — DATE OF VISIT DEC. 19.89



W¹/₄ SECTION 27 7/19

CORNER — LEFT AS FOUND FOUND AND TAGGED REESTABLISHED OBLITERATED CORNER REBUILT

PHYSICAL DESCRIPTION OF CORNER FOUND; EVIDENCE AND METHOD USED TO IDENTIFY OR REESTABLISH

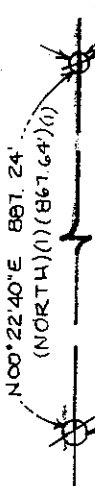
PHYSICAL DESCRIPTION OF MONUMENTS REBUILT OR PERPETUATED

CALIFORNIA COORDINATE SYSTEM ORDER: FIRST
STATIONS USED: NGS (USC & GS)
ZONE _____ ELEVATION _____

FOUND 28" φ WHITE OAK LINE TREE WITH OVERGROWN CHOP MARKS ON N & S FACES (24" WHITE OAK)(1). SET NAIL WITH TAG LS5339 IN SW SIDE OF ROOT CROWN

_____ TION _____

SKETCH: (Include



1/4 CORNER
FOUND 20" WHITE OAK WITH OVERGROWN BLAZE (18" WHITE OAK, S63°E 54.78')(1)
SET 5/8" φ BAR WITH CAP LS5339 IN A ROCK MOUND AT RECORD BEARING & DISTANCE FROM ORIGINAL BEARING TREE

Copied From RS 36/54

SURVEYOR'S CERTIFICATE

THIS CORNER RECORD WAS PREPARED BY ME OR UNDER MY DIRECTION IN CONFORMANCE WITH THE LAND SURVEYORS ACT ON _____ 19____

SIGNED: _____
L.S. or R.C.E. No. _____

COUNTY SURVEYOR'S CERTIFICATE

THE CORNER RECORD WAS RECEIVED _____ 19____ AND EXAMINED AND FILED _____ 19____

BY: _____ TITLE: _____

DOCUMENT No. _____

STATEMENT ON BACK OF SHEET