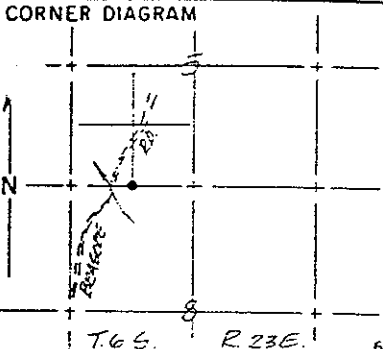


INDEX  
File No. \_\_\_\_\_

CORNER RECORD (SEARCH)  
(Ref. FSM 7151.4)

Tract \_\_\_\_\_  
Surv. \_\_\_\_\_  
w/1/16 Sec 5 Cor. 6/23  
No. \_\_\_\_\_

T \_\_\_\_\_ R. \_\_\_\_\_ R.D. \_\_\_\_\_ County \_\_\_\_\_  
Merid. \_\_\_\_\_ N.F. \_\_\_\_\_ State \_\_\_\_\_



DESCRIBE CORNER MONUMENT FOUND  
None found

DESCRIBE BEARING TREES OR OTHER OFFICIAL ACCESSORIES FOUND  
None found

PHOTO IDENTIFICATION DATA  
Photo No. \_\_\_\_\_  
Filed At. \_\_\_\_\_  
Object Ident. \_\_\_\_\_  
Ident. By \_\_\_\_\_  
Signature \_\_\_\_\_

DESCRIBE CORNER LOCATION RELATIVE TO NEAR-BY FEATURES, ALSO HOW TO REACH CORNER  
Go north on Beasore Road approximately 1 1/4 miles from Cold Springs Summit to small creek. Walk east up cleared, posted line to corner.

PLANE COORDINATE POSITION DATA  
State \_\_\_\_\_ Zone \_\_\_\_\_  
X \_\_\_\_\_  
Y \_\_\_\_\_  
Estab. By \_\_\_\_\_  
Agency \_\_\_\_\_

Signature \_\_\_\_\_ Title \_\_\_\_\_ Division \_\_\_\_\_ Headquarters \_\_\_\_\_ Date \_\_\_\_\_ FS-7100-52 (3/68)

CORNER RECORD (PERPETUATION)

MONUMENT: DESCRIBE NEW MONUMENT SET, OR WORK DONE TO PRESERVE EXISTING MONUMENT

Set U.S.F.S. monument in rock mound marked West 1/16 corner, Section 5 and Section 8, Township 6 South, Range 23 East.

ACCESSORIES : DESCRIBE NEW BT'S WITNESS OBJECTS ETC. ESTABLISHED, OR WORK DONE TO PRESERVE EXISTING EVIDENCE

I blazed a 10" fir South 30° West, 15.94' and a 9" fir North 10° West, 12.85'. I set a U.S.F.S. post South 45° East, 4.0'.

Work Done By Jones Title Surveyor Date \_\_\_\_\_ State Registration No. LS 4298  
or Agency \_\_\_\_\_  
Certified Cor. Record Prepared? Yes  No  Filed At: \_\_\_\_\_ Date \_\_\_\_\_

REMARKS