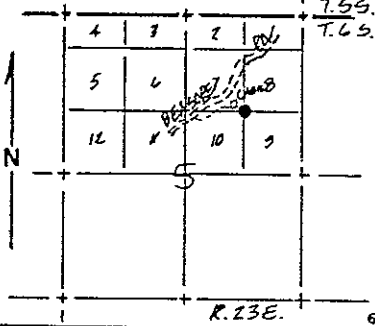


CORNER DIAGRAM



DESCRIBE CORNER MONUMENT FOUND

None found

DESCRIBE BEARING TREES OR OTHER OFFICIAL ACCESSORIES FOUND

None found

PHOTO IDENTIFICATION DATA

Photo No. \_\_\_\_\_  
 Filed At. \_\_\_\_\_  
 Object Ident. \_\_\_\_\_  
 Ident. By \_\_\_\_\_  
*Signature*

DESCRIBE CORNER LOCATION RELATIVE TO NEAR-BY FEATURES, ALSO HOW TO REACH CORNER

Take Beasore Road north past Jones Store less than 1/4 mile to a driveway to the east. Follow the drive to the right to a cabin. The corner is southeast of the cabin.

PLANE COORDINATE POSITION DATA

State \_\_\_\_\_ Zone \_\_\_\_\_  
 X \_\_\_\_\_  
 Y \_\_\_\_\_  
 Estab. By \_\_\_\_\_  
*Agency*

Signature \_\_\_\_\_ Title \_\_\_\_\_ Division \_\_\_\_\_ Headquarters \_\_\_\_\_ Date \_\_\_\_\_

CORNER RECORD (PERPETUATION)

MONUMENT. DESCRIBE NEW MONUMENT SET, OR WORK DONE TO PRESERVE EXISTING MONUMENT

Set U.S.F.S. monument in a rock mound marked northeast 1/16 corner, Section 5, township 6 South, Range 23 East.

ACCESSORIES. DESCRIBE NEW BT'S WITNESS OBJECTS ETC. ESTABLISHED, OR WORK DONE TO PRESERVE EXISTING EVIDENCE

I blazed a 15" fir, South 87° East, 27.67' and a 10" fir South 27° West, 28.96'. I set a U.S.F.S. post South 45° East, 4.0'.

Work Done By Jones Title Surveyor Date \_\_\_\_\_ State Registration No. LS 4298  
 or Agency \_\_\_\_\_

Certified Cor. Record Prepared? Yes \_\_\_\_\_ No \_\_\_\_\_ Filed At. \_\_\_\_\_ Date \_\_\_\_\_

REMARKS