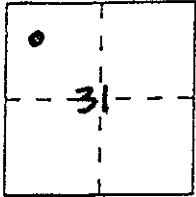


CORNER RECORD

Document Number _____

City of _____ County of MADERA, California

Legal Description LOT 38 IN COUNTRY CLUB ACRES
SUBDIVISION PER BOOK 7, PG 35 MCR



CORNER TYPE

TGS
R2ZE

Government Corner Control
 Meander Property
 Rancho Other
 Date of Survey 10/29/2000

COORDINATES
(Optional)

N. _____
 E. _____
 Zone _____ Datum _____
 Elev. _____

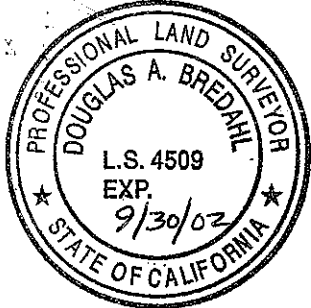
Corner — Left as found Found and tagged Established Reestablished Rebuilt

Identification and type of corner found: Evidence used to identify or procedure used to establish or reestablish the corner:
FOUND 1" I.D.I.P.'S WITH NO I.D. SET BRASS TAG
IN CONCRETE IN 1" I.D.I.P.'S. LEFT 1/2" I.D.I.P.'S
AS FOUND WITH NO I.D. (SEE SKETCH, SIDE 2)

A description of the physical condition of the monument as found and as set or reset: _____

SURVEYOR'S STATEMENT

This Corner Record was prepared by me or under my direction in conformance with the Land Surveyors' Act on 10/31/2000
 Signed Douglas A. Bredahl L.S. or R.C.E. Number 4509



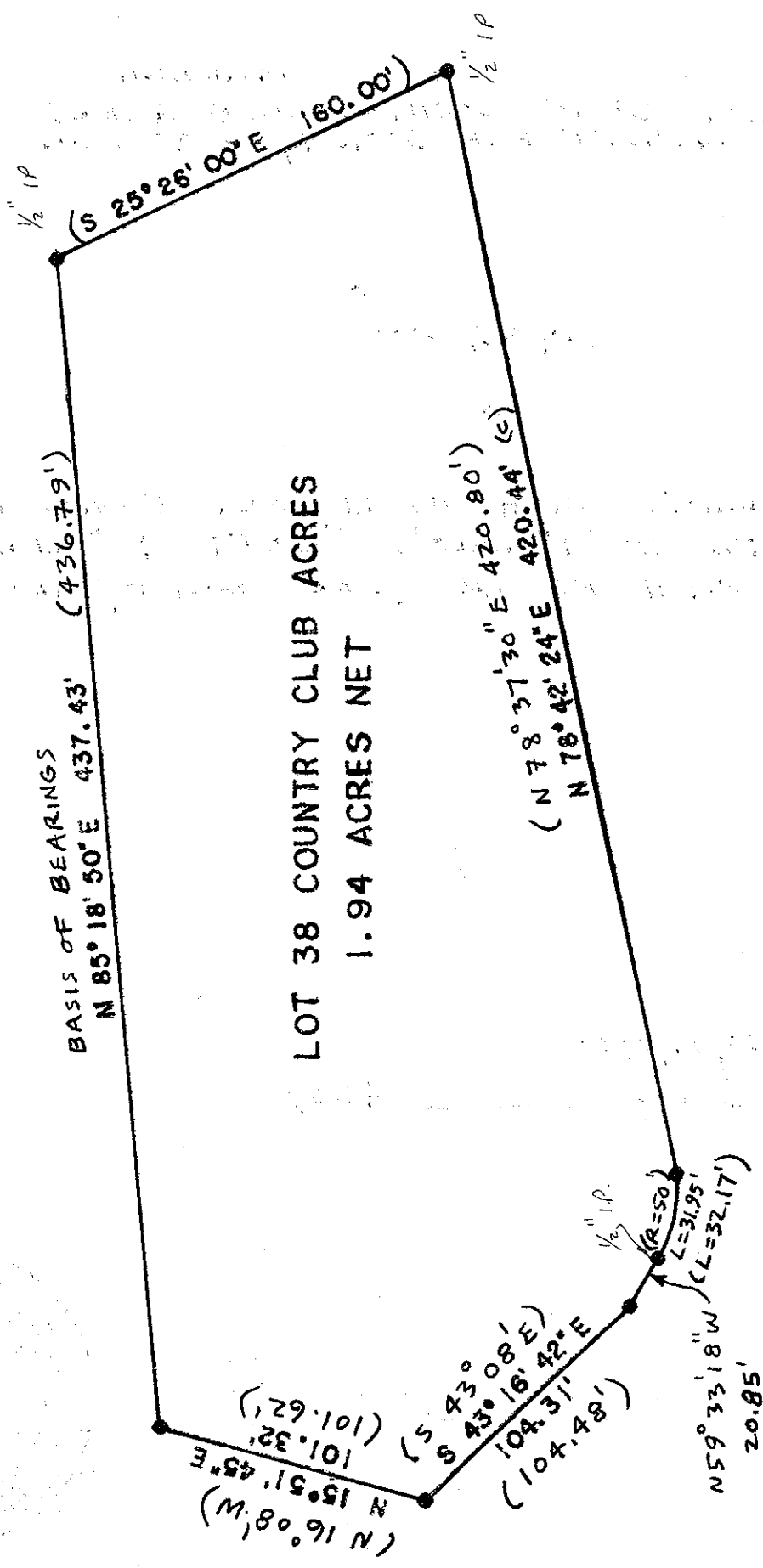
COUNTY SURVEYOR'S STATEMENT

This Corner Record was received Nov. 16, 2000 and examined _____
 and filed Nov. 17, 2000
 Signed Michael Kinn Title County Surveyor



County Surveyor's Comment _____

0622



BASIS OF BEARINGS
 N 85° 18' 50" E 437.43' (436.79')

LOT 38 COUNTRY CLUB ACRES
 1.94 ACRES NET

(N 78° 37' 30" E 420.80')
 (N 78° 42' 24" E 420.44' (S))

(N 16° 08' W)
 (N 15° 51' 45" E)
 (101.32')
 (101.62')

(S 43° 08' E)
 (43° 16' 42" E)
 (104.31')
 (104.48')

(R=50)
 (L=31.95')
 (L=32.17')

N 59° 33' 18" W
 20.85'
 (S 58° 27' E)
 (20.57')

LEGEND
 • MONUMENTS FOUND & ACCEPTED, 1" I.P.'S
 ○ OPEN, OR AS NOTED

RECEIVED

NOV 16 2000

PROPERTY
OF
PLANNING