

CORNER RECORD

COUNTY OF Madera T. 6S R. 22E M.D.B. & _____ MERIDIAN CALIFORNIA

CORNER TYPE: GOVT. CORNER MEANDER RANCHO CONTROL OTHER

CORNER IDENTIFICATION — DATE OF VISIT July 6 1983

Northwest corner Section 17 6/22.
(Common to Sections 7, 8, 17, and 18)

CORNER — LEFT AS FOUND FOUND AND TAGGED REESTABLISHED OBLITERATED CORNER RESULT

PHYSICAL DESCRIPTION OF CORNER FOUND; EVIDENCE AND METHOD USED TO IDENTIFY OR REESTABLISH
Found and Accepted: A 1 1/4" O.D., I.P. flush, no tag. Found remains of 2 original bearing trees per GLO notes of Mark Howell, Deputy Surveyor, 1874.

PHYSICAL DESCRIPTION OF MONUMENTS REBUILT OR PERPETUATED
 Remonumented with F.S.M., up 6". Built a rock mound 1 1/2' at the base and 1/2' high around monument. Placed found monument inside F.S.M. Set a metal post with a Forest Service K-tag and monument sign 4'+ NE of the corner.

 F.S.M. - Aluminum monument, 2-1/2" O.D., 30" long with a 3-1/4" O.D. aluminum cap; stamped for the corner, with LS 4689, the date and the Forest Service logo.

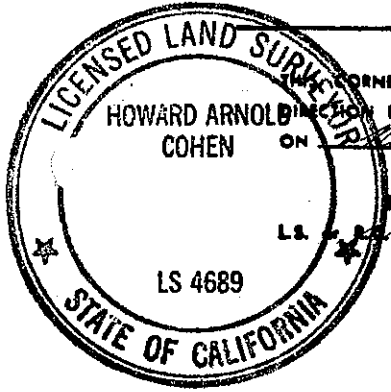
CALIFORNIA COORDINATE SYSTEM ORDER: FIRST SECOND THIRD

STATIONS USED: NGS (USC & GS) STATE COUNTY OTHER STATION _____ STATION _____

ZONE _____ ELEVATION _____ NORTHINGS (N) _____ EASTINGS (E) _____

SKETCH: (Include reference tie or witness points, remarks and topo of area)

<p><u>Corner Ties</u></p> <p><u>Original Evidence</u></p> <ol style="list-style-type: none"> 1. A Stump hole, 3' dia., bears S 42° E; 30'. 2. A Stump hole, 2' dia., bears N 70° E; 15' <p><u>New Bearing Trees</u></p> <ol style="list-style-type: none"> 3. An Incense Cedar, 5.7" dia., bears S 18° 49'E; 31.24'. 4. An Incense Cedar, 5.1" dia., bears S 28° 28'W; 34.09'. 5. An Incense Cedar, 6.1" dia., bears N 27° 34'W; 28.27'. 6. An Incense Cedar, 8.5" dia., bears N 82° 12'E; 15.63' (scar on S. side) <p style="text-align: center;">Set a 1 1/4" O.D., I.P., 32" long, up 5" on property line</p> <p style="text-align: center;">(Continued on other side)</p>	<p><u>Cap Inscription</u></p> <p>T6S R 22 E</p> <p style="text-align: center;">S7 S8</p> <p style="text-align: center;">S18 S17</p> <p style="text-align: center;">LS 4689 1983</p>
---	---



SURVEYOR'S CERTIFICATE

CORNER RECORD WAS PREPARED BY ME OR UNDER MY DIRECTION IN CONFORMANCE WITH THE LAND SURVEYORS ACT ON November 7 1983

SIGNED: Howard Arnold Cohen

LS No. LS 4689

SEAL

COUNTY SURVEYOR'S CERTIFICATE

THE CORNER RECORD WAS RECEIVED 1-18-84 AND EXAMINED AND FILED 1-18-84 1984

BY: [Signature]

TITLE: _____

DOCUMENT No. _____

STATEMENT ON BACK OF SHEET YES NO

N 1° 50' 08"E; 201' with a carriage bolt in top stamped: P 1.
LS 4689

• Corner is 12' east of a fence running North and South.

- Bearings are to the center of trees at base. Distances are horizontal to a nail and tag (stamped LS 4689) driven into the side center of the root crown.
- Posted Forest Service Monument and Bearing Tree signs.
- Blazed and scribed trees and stamped monument in accordance with the BLM 1973 "Manual of Surveying Instructions."

0622 200500b

