

CORNER RECORD

COUNTY OF Madeara T. 6 S R. 22 E M.D.B. 2 MERIDIAN CALIFORNIA

CORNER TYPE: GOV'T. CORNER MEANDER RANCHO CONTROL OTHER

CORNER IDENTIFICATION — DATE OF VISIT _____ 19____



N¹/₄ cor. sec. 15 6/22

CORNER — LEFT AS FOUND FOUND AND TAGGED REESTABLISHED OBLITERATED CORNER REBUILT

PHYSICAL DESCRIPTION OF CORNER FOUND; EVIDENCE AND METHOD USED TO IDENTIFY OR REESTABLISH *Fd rock md. and Forest Service 'K' tags on nearby trees dated 1938-43 identifying position of rock md as original corner position. Original monument was a 2 1/2" diameter post. Accepted rock md as perpetuation of original corner position.*

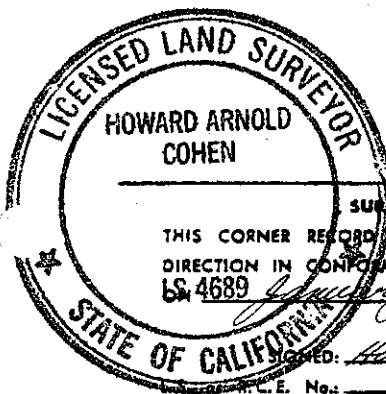
PHYSICAL DESCRIPTION OF MONUMENTS REBUILT OR PERPETUATED *Set 30" aluminum monument with flared base and 3 1/4" aluminum cap with Forest Service Logo; stamped for corner with date (1979) and L.S. 4689. Built rock mound around monument. Monument up 6"*

CALIFORNIA COORDINATE SYSTEM ORDER: FIRST SECOND THIRD
 STATIONS USED: NGS (USC & GS) STATE COUNTY OTHER STATION _____ STATION _____
 ZONE _____ ELEVATION _____ NORTHINGS (Y) _____ EASTINGS (X) _____

SKETCH: (Include reference tie or witness points, remarks and topo of area) *Ties are from Monument. Bearing trees are blazed and scribed 'NBT' for New Bearing Tree.*

Ties:

*N 61 1/2° E 20.41' to 5&N in 11.4" dia white Fir
 N 41° W 32.84' to 5&N in 22.6" dia Incense Cedar*



SURVEYOR'S CERTIFICATE

THIS CORNER RECORD WAS PREPARED BY ME OR UNDER MY DIRECTION IN CONFORMANCE WITH THE LAND SURVEYORS ACT
 L.S. 4689 *January 18* 1980
 Signed: Howard Arnold Cohen
 L.S. No. L.S. 4689

COUNTY SURVEYOR'S CERTIFICATE

THE CORNER RECORD WAS RECEIVED _____ 19____
 AND EXAMINED AND FILED FEB 6 1980
 BY: A. GROTE
 TITLE: COUNTY ENGR.

DOCUMENT No. _____

STATEMENT ON BACK OF SHEET