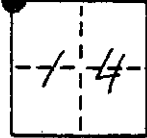


# CORNER RECORD

COUNTY OF Madera T. 6 S R. 22 E M.D.B. & MERIDIAN CALIFORNIA  
 CORNER TYPE: GOV'T. CORNER  MEANDER  RANCHO  CONTROL  OTHER   
 CORNER IDENTIFICATION - DATE OF VISIT August 15 19 79



NW cor. Sec. 14 6/22

CORNER - LEFT AS FOUND  FOUND AND TAGGED  REESTABLISHED OBLITERATED CORNER  REBUILT

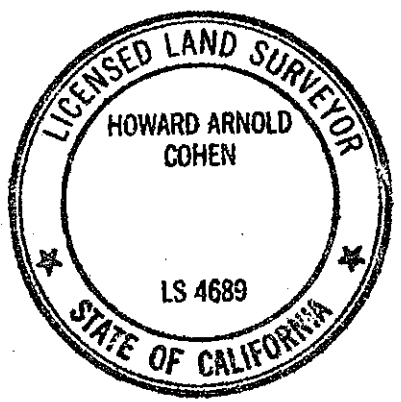
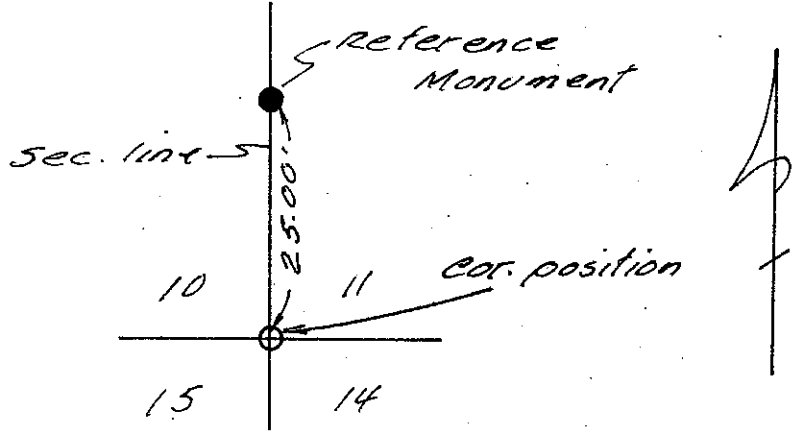
PHYSICAL DESCRIPTION OF CORNER FOUND; EVIDENCE AND METHOD USED TO IDENTIFY OR REESTABLISH *Re established cor. on line between NW cor Sec 11 6/22 and the NW cor. sec 23 6/22 at record call south of brook (6.6'). Position agrees with calls of original survey by Mark Howell, June 1874. Set ref. mon. 25' North of corner on the section line.*

PHYSICAL DESCRIPTION OF MONUMENTS REBUILT OR PERPETUATED  
*Set 30" aluminum monument with flared base and 3 1/4" aluminum cap with Forest Service logo; stamped for corner with date (1979) and L.S. 4689. Built 4' dia rock mound around mon. Mon up 12" This is a ref. monument set 25' N. of cor. on sec. line*

CALIFORNIA COORDINATE SYSTEM ORDER: FIRST  SECOND  THIRD   
 STATIONS USED: NGS (USC & GS)  STATE  COUNTY  OTHER  STATION \_\_\_\_\_ STATION \_\_\_\_\_  
 ZONE \_\_\_\_\_ ELEVATION \_\_\_\_\_ NORTHINGS (Y) \_\_\_\_\_ EASTINGS (X) \_\_\_\_\_

SKETCH: (Include reference tie or witness points, remarks and topo of area) *Ties are from monument Bearing trees are blazed and scribed 'NBT' for New Bearing Tree.*

*Ties: N 65° E 73.64' to 58&N in 25.6" dia white Fir  
 S 30° E 14.60' to 58&N in 16.8" dia Incense Cedar  
 S 36 3/4° W 36.37' to 58&N in 18.7" dia white Fir  
 N 27 1/4° W 53.22' to 58&N in 20.1" dia Incense Cedar*



**SURVEYOR'S CERTIFICATE**  
 THIS CORNER RECORD WAS PREPARED BY ME OR UNDER MY DIRECTION IN CONFORMANCE WITH THE LAND SURVEYORS ACT ON January 18 19 80  
 SIGNED: Howard Arnold Cohen  
 L.S. or R.C.E. No.: L.S. 4689

**COUNTY SURVEYOR'S CERTIFICATE**  
 THE CORNER RECORD WAS RECEIVED \_\_\_\_\_ 19 \_\_\_\_\_ AND EXAMINED AND FILED FEB 6 1980  
 BY: A. Duto  
 TITLE: COUNTY ENGR.  
 DOCUMENT No. \_\_\_\_\_  
 STATEMENT ON BACK OF SHEET