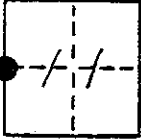


CORNER RECORD

COUNTY OF Madera T. 6 S R. 22 E MDBB MERIDIAN CALIFORNIA
 CORNER TYPE: GOVT. CORNER MEANDER RANCHO CONTROL OTHER
 CORNER IDENTIFICATION — DATE OF VISIT August 16 19 79



W 1/4 cor. Sec 11 6/22

CORNER — LEFT AS FOUND FOUND AND TAGGED REESTABLISHED OBLITERATED CORNER REBUILT

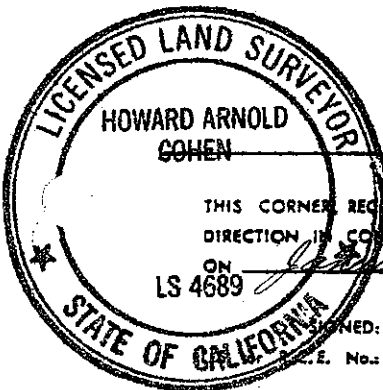
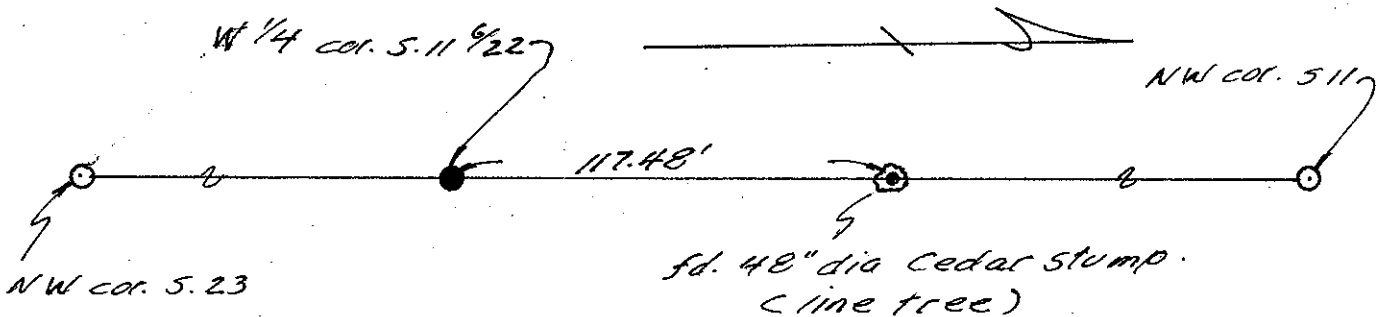
PHYSICAL DESCRIPTION OF CORNER FOUND; EVIDENCE AND METHOD USED TO IDENTIFY OR REESTABLISH *fd. 48" dia Incense Cedar line tree stump on line between NW cor. sec 11 6/22 and NW cor. sec. 23 6/22. Reestablished 1/4 cor. position at record distance (117.48') south of line tree and on line between NW cor sec 11 and NW cor sec 23 Position agrees with calls of original survey by Mack Howell June 1874*

PHYSICAL DESCRIPTION OF MONUMENTS REBUILT OR PERPETUATED *Set 30" aluminum monument with flared base and 3 1/4" alum. cap with Forest Service logo; stamped for cor with date (1979) and L.S. 4689 Built rock md. around monument. Mon. up. E"*

CALIFORNIA COORDINATE SYSTEM ORDER: FIRST SECOND THIRD
 STATIONS USED: NGS (USC & GS) STATE COUNTY OTHER STATION _____ STATION _____
 ZONE _____ ELEVATION _____ NORTHINGS (Y) _____ EASTINGS (X) _____

SKETCH: (Include reference tie or witness points, remarks and topo of area) *Ties are from Monument. Bearing trees are blazed and scribed 'NBT' for New Bearing Tree.*

*Ties N 41 3/4° E 24.00' to 58 N in 19" dia Incense Cedar
 N 51° W 45.66' to 58 N in 17.5" dia White Fir*



SURVEYOR'S CERTIFICATE
 THIS CORNER RECORD WAS PREPARED BY ME OR UNDER MY DIRECTION IN CONFORMANCE WITH THE LAND SURVEYORS ACT
 ON January 18 19 80
 LS 4689
 SIGNED: Howard Arnold Cohen
 P.E. No.: L.S. 4689

COUNTY SURVEYOR'S CERTIFICATE
 THE CORNER RECORD WAS RECEIVED _____ 19 _____
 AND EXAMINED AND FILED FEB. 6 19 80
 BY: A. Knute
 TITLE: COUNTY ENGR.

DOCUMENT No. _____
 STATEMENT ON BACK OF SHEET