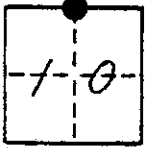


CORNER RECORD

COUNTY OF Madera T. 6 S R. 22 E M.D.B. & MERIDIAN CALIFORNIA
 CORNER TYPE: GOVT. CORNER MEANDER RANCHO CONTROL OTHER
 CORNER IDENTIFICATION - DATE OF VISIT Aug. 20 1979



N 1/4 cor. 5. 10 6/22

CORNER - LEFT AS FOUND FOUND AND TAGGED REESTABLISHED OBLITERATED CORNER RESULT

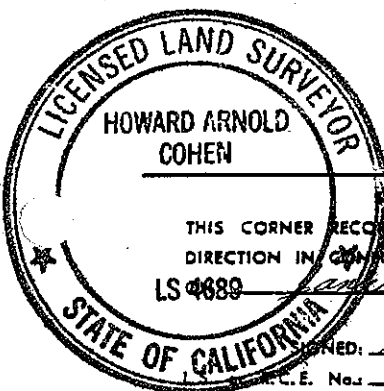
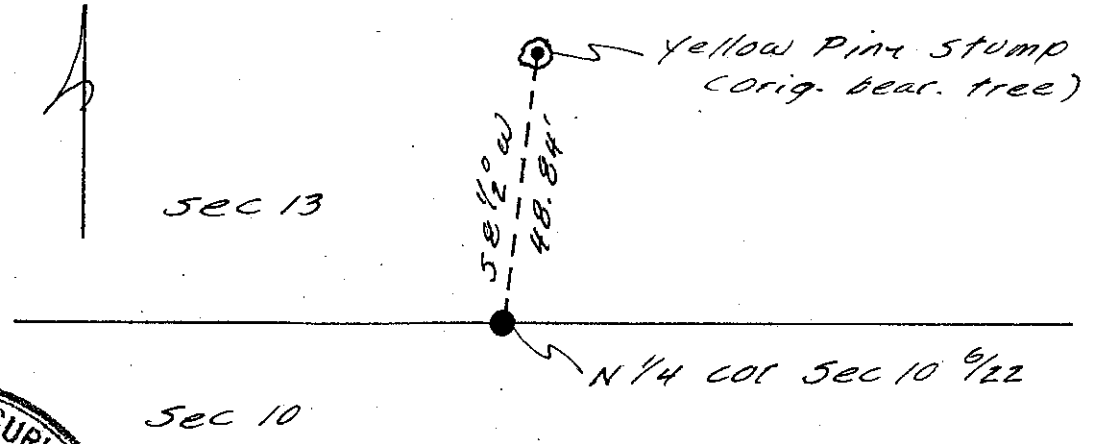
PHYSICAL DESCRIPTION OF CORNER FOUND; EVIDENCE AND METHOD USED TO IDENTIFY OR REESTABLISH *Fd. 66" dia ± yellow Pine stump (original bearing tree). Set corner at record bearing & distance from stump. (S 8 1/2° W 741ks) position thus established fits topo calls and call for 1 1/4 tree 5.17 ch's to the west reasonably well. Forest Service 'k' tags identify stump as original bearing tree*

PHYSICAL DESCRIPTION OF MONUMENTS RESULT OR PERPETUATED *Set 30° aluminum monument with flared base and 3 1/4" aluminum cap with Forest Service Logo; stamped for corner with date (1979) and L.S. 4689. Built rock m.d. around monument. Mon. up. 6"*

CALIFORNIA COORDINATE SYSTEM ORDER: FIRST SECOND THIRD
 STATIONS USED: NGS (USC & GS) STATE COUNTY OTHER STATION _____ STATION _____
 ZONE _____ ELEVATION _____ NORTHINGS (Y) _____ EASTINGS (X) _____

SKETCH: (Include reference tie or witness points, remarks and topo of area) *Ties are from Monument. Bearing trees are blazed and scribed 'NBT' for New Bearing Tree.*

Ties *N 19 1/2° E 8.22' to 5&N in 11.6" dia Incense Cedar
 N 82 1/4° W 51.23' to 5&N in 21.9" dia Ponderosa Pine*



SURVEYOR'S CERTIFICATE
 THIS CORNER RECORD WAS PREPARED BY ME OR UNDER MY DIRECTION IN CONFORMANCE WITH THE LAND SURVEYORS ACT
 LS 4689 January 18 1980
 WITNESSED: Howard Arnold Cohen
 S.C.E. No. LS 4689

COUNTY SURVEYOR'S CERTIFICATE
 THE CORNER RECORD WAS RECEIVED _____ 19_____
 AND EXAMINED AND FILED FEB. 6 1980
 BY: M. D. B. &
 TITLE: COUNTY ENGR.
 DOCUMENT No. _____
 STATEMENT ON BACK OF SHEET