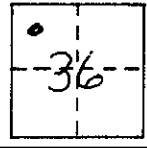


NAD27

CORNER RECORD

COUNTY OF Madera T. 6S R. 21E Mt Diablo MERIDIAN CALIFORNIA
 CORNER TYPE: GOV'T. CORNER MEANDER RANCHO CONTROL OTHER
 CORNER IDENTIFICATION - DATE OF VISIT 4-19 19 90



CORNER - LEFT AS FOUND FOUND AND TAGGED REESTABLISHED OBLITERATED CORNER REBUILT

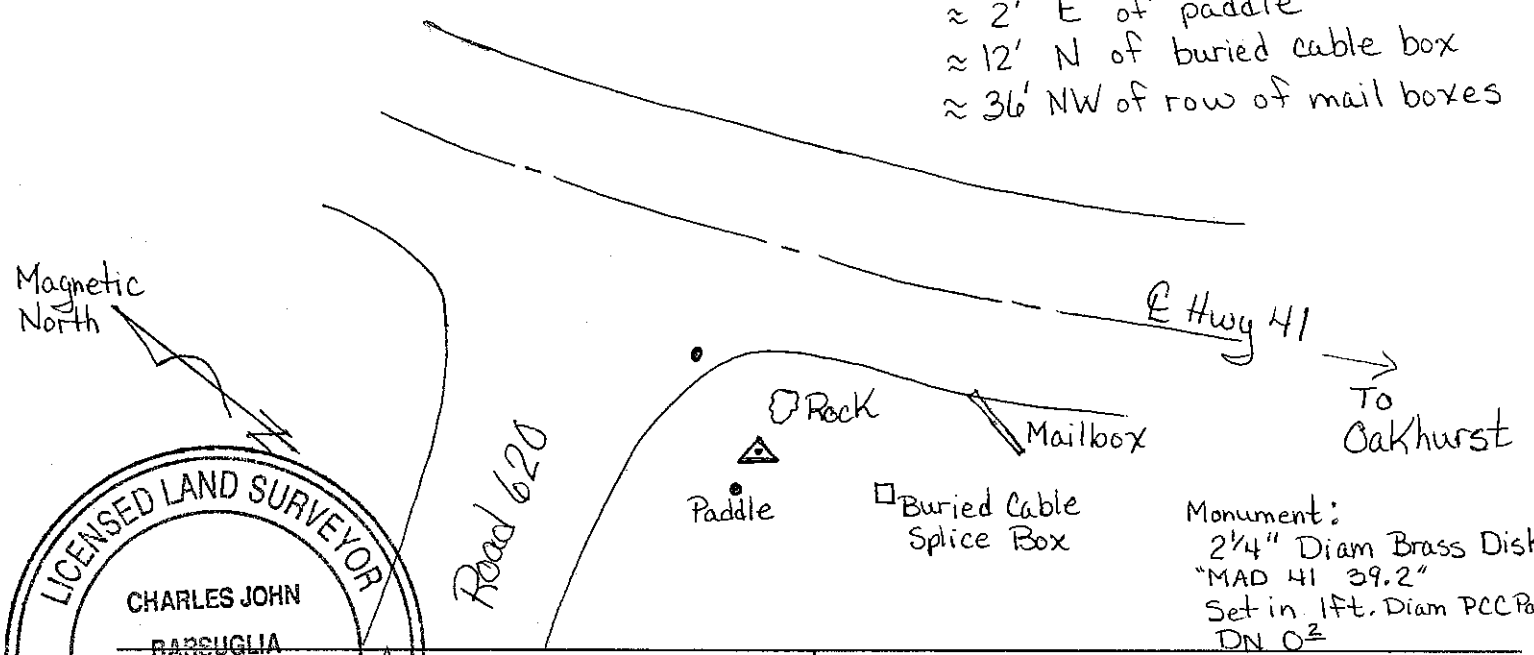
PHYSICAL DESCRIPTION OF CORNER FOUND; EVIDENCE AND METHOD USED TO IDENTIFY OR REESTABLISH

PHYSICAL DESCRIPTION OF MONUMENTS REBUILT OR PERPETUATED (set) GPS - MAD 41 - 39.2
 The point is located at the south-west corner of the "T" intersection of Hwy 41 and Road 620. It is located in dirt south of Road 620.

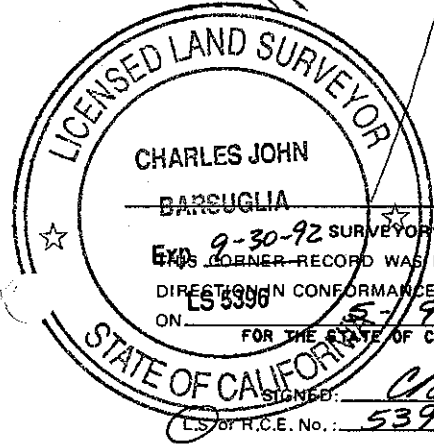
CALIFORNIA COORDINATE SYSTEM ORDER: FIRST SECOND THIRD
 STATIONS USED: NGS (USC & GS) STATE COUNTY OTHER STATION _____ STATION _____
 ZONE 3 ELEVATION 2955.31 NORTHINGS (Y) 742660.3418 EASTINGS (X) 1817134.1046

SKETCH: (Include reference tie or witness points, remarks and topo of area)

- ≈ 12' SW of stop sign
- ≈ 2.5' W of 3x2x2 rock
- ≈ 2' E of paddle
- ≈ 12' N of buried cable box
- ≈ 36' NW of row of mail boxes



Monument:
 2 1/4" Diam Brass Disk
 "MAD 41 39.2"
 Set in 1ft. Diam PCC Pad
 DN 02



9-30-92 SURVEYOR'S CERTIFICATE
 THIS CORNER RECORD WAS PREPARED BY ME OR UNDER MY DIRECTION IN CONFORMANCE WITH THE LAND SURVEYORS ACT ON 5-19 19 90 FOR THE STATE OF CALIFORNIA
 SIGNED: Charles John Barsuglia
 L.S. or R.C.E. No.: 5396

COUNTY SURVEYOR'S CERTIFICATE
 THE CORNER RECORD WAS RECEIVED _____ 19____ AND EXAMINED AND FILED 6-18 19 90
 BY: Waver Stinson
 TITLE: Co. Engin

DOCUMENT No. _____
 STATEMENT ON BACK OF SHEET YES NO

SEAL