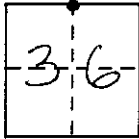


# CORNER RECORD

COUNTY OF MADERA T. 6S R. 21E M.D. MERIDIAN CALIFORNIA  
 CORNER TYPE: GOV'T. CORNER  MEANDER  RANCHO  CONTROL  OTHER   
 CORNER IDENTIFICATION - DATE OF VISIT 4-27 19 90



N<sup>1</sup>/<sub>4</sub> 36 <sup>6</sup>/<sub>21</sub>

CORNER - LEFT AS FOUND  FOUND AND TAGGED  REESTABLISHED OBLITERATED CORNER  REBUILT

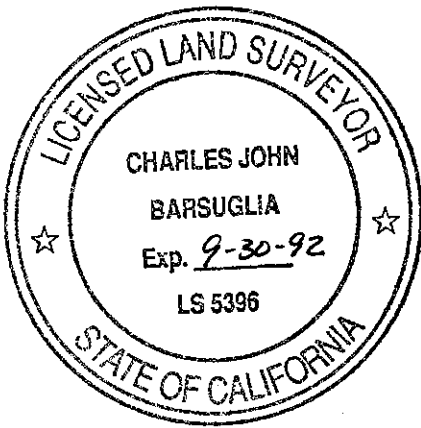
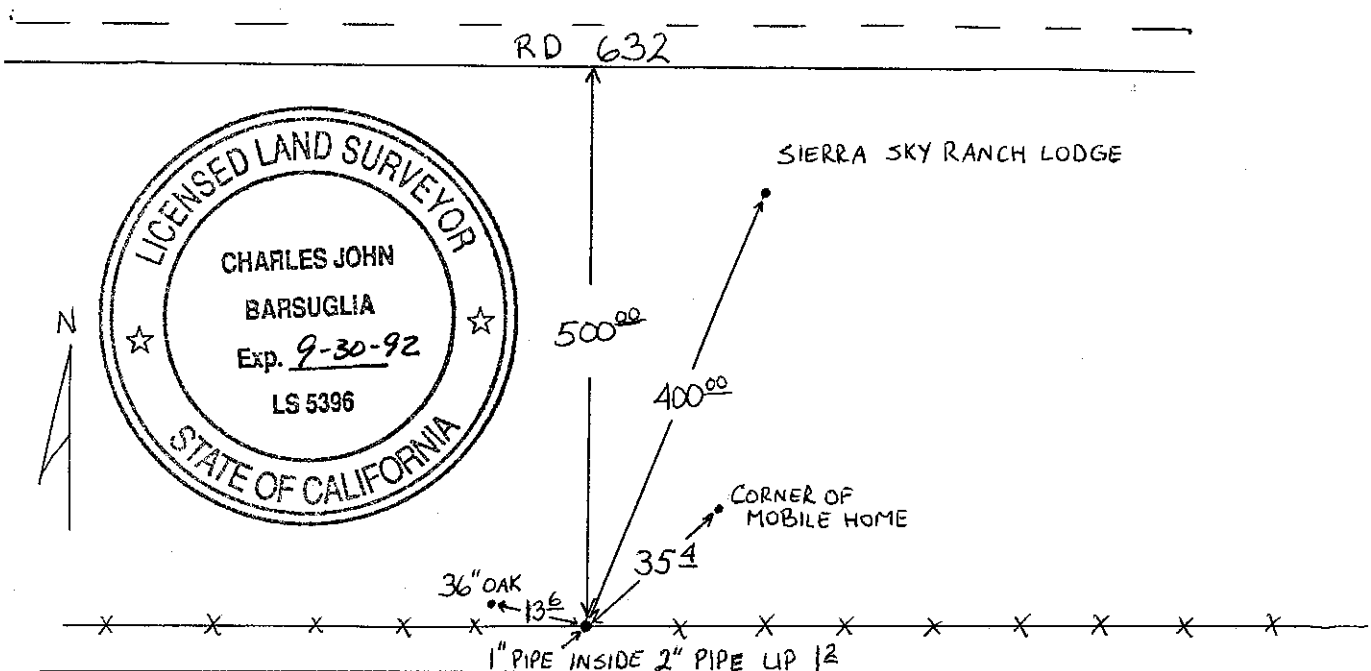
PHYSICAL DESCRIPTION OF CORNER FOUND; EVIDENCE AND METHOD USED TO IDENTIFY OR REESTABLISH

1" PIPE INSIDE 2" PIPE UP 12

PHYSICAL DESCRIPTION OF MONUMENTS REBUILT OR PERPETUATED

CALIFORNIA COORDINATE SYSTEM ORDER: FIRST  SECOND  THIRD   
 STATIONS USED: NGS (USC & GS)  STATE  COUNTY  OTHER  STATION \_\_\_\_\_  
 ZONE \_\_\_\_\_ ELEVATION \_\_\_\_\_ NORTHINGS (Y) \_\_\_\_\_ EASTINGS (X) \_\_\_\_\_

SKETCH: (Include reference tie or witness points, remarks and topo of area)



**SURVEYOR'S CERTIFICATE**  
 THIS CORNER RECORD WAS PREPARED BY ME OR UNDER MY DIRECTION IN CONFORMANCE WITH THE LAND SURVEYORS ACT ON 2-7 19 90 FOR THE STATE OF CALIFORNIA

SIGNED: Charles John Barsuglia  
 L.S. or R.C.E. No.: 5396

SEAL

**COUNTY SURVEYOR'S CERTIFICATE**  
 THE CORNER RECORD WAS RECEIVED 7-11 19 90 AND EXAMINED AND FILED 7-17 19 90.  
 BY: Dove Stinson

TITLE: DOWE STINSON  
MADERA COUNTY ENGINEER  
 209-675-7817

DOCUMENT No. \_\_\_\_\_

STATEMENT ON BACK OF SHEET

YES  NO