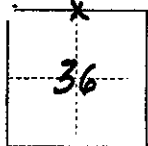


CORNER RECORD

COUNTY OF MADERA T. 6S R. R21E MD MERIDIAN CALIFORNIA

CORNER TYPE: GOV'T. CORNER MEANDER RANCHO CONTROL OTHER

IDENTIFICATION — DATE OF VISIT AUG 14 19 75



N 1/4 COR SEC 36, T6S, R21E, MDB&M

CORNER — LEFT AS FOUND FOUND AND TAGGED REESTABLISHED OBLITERATED CORNER REBUILT

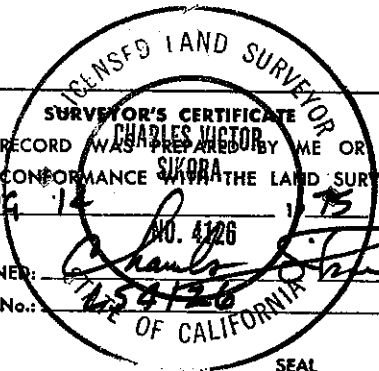
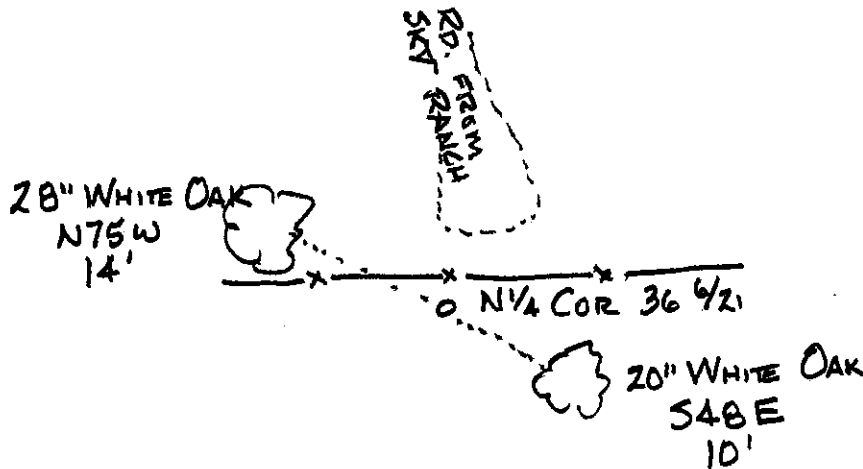
PHYSICAL DESCRIPTION OF CORNER FOUND; EVIDENCE AND METHOD USED TO IDENTIFY OR REESTABLISH

FOUND 3/4" I.P. INSIDE 3" I.P. WITH ALUMINUM TAG WITH I.D. AND RE B938 WIRED TO 3" PIPE

PHYSICAL DESCRIPTION OF MONUMENTS REBUILT OR PERPETUATED

CALIFORNIA COORDINATE SYSTEM ORDER: FIRST SECOND THIRD
STATIONS USED: NGS (USC & GS) STATE COUNTY OTHER STATION _____ STATION _____
ELEVATION _____ NORTHINGS (Y) _____ EASTINGS (X) _____

SKETCH: (Include reference tie or witness points, remarks and topo of area)



THIS CORNER RECORD WAS PREPARED BY ME OR UNDER MY DIRECTION IN CONFORMANCE WITH THE LAND SURVEYORS ACT ON AUG 14 19 75
SIGNED: Charles Victor Sikora
L.S. or R.C.E. No.: 4126

COUNTY SURVEYOR'S CERTIFICATE
THE CORNER RECORD WAS RECEIVED AUG 15 19 75
AND EXAMINED AND FILED AUG 18 19 75
BY: J. J. [Signature]
TITLE: County Engr. Asst
DOCUMENT No. 75-28-08

STATEMENT ON BACK OF SHEET

YES NO