

CENTER CORNER, SECTION 36, T6S, R21E

CORNER RECORD

COUNTY OF MADERA T. 6S R. 21E MT. DIABLO MERIDIAN CALIFORNIA
CORNER TYPE: GOV'T. CORNER MEANDER RANCHO CONTROL OTHER
CORNER IDENTIFICATION - DATE OF VISIT APRIL 1990



CORNER - LEFT AS FOUND FOUND AND TAGGED REESTABLISHED OBLITERATED CORNER REBUILT

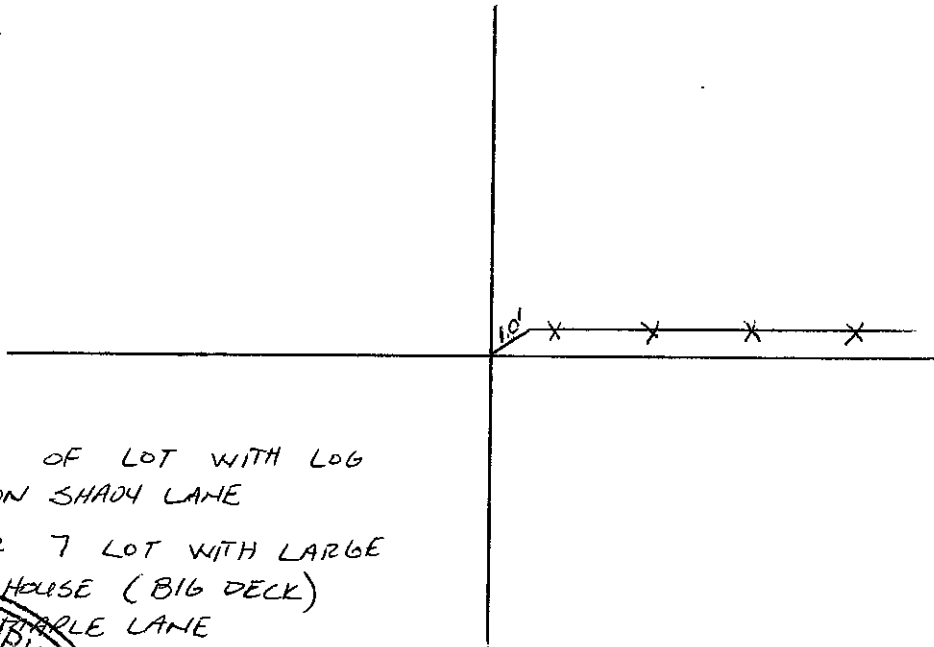
PHYSICAL DESCRIPTION OF CORNER FOUND; EVIDENCE AND METHOD USED TO IDENTIFY OR REESTABLISH

FOUND 1" I.P.
TAGGED LS 2737

PHYSICAL DESCRIPTION OF MONUMENTS REBUILT OR PERPETUATED

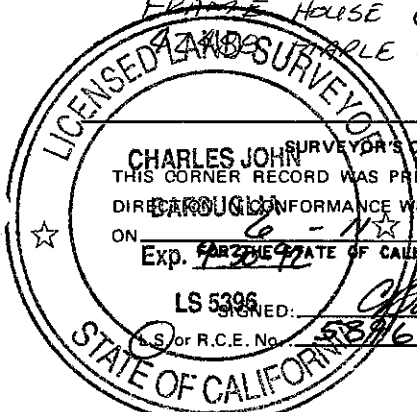
CALIFORNIA COORDINATE SYSTEM ORDER: FIRST SECOND THIRD
STATIONS USED: NGS (USC & GS) STATE COUNTY OTHER STATION _____ STATION _____
ZONE _____ ELEVATION _____ NORTHINGS (Y) _____ EASTINGS (X) _____

SKETCH: (Include reference tie or witness points, remarks and topo of area)



N.E. COR OF LOT WITH LOG CABIN ON SHADE LANE

N.W. COR 7 LOT WITH LARGE FRAME HOUSE (BIG DECK) SHADE LANE



SURVEYOR'S CERTIFICATE
CHARLES JOHN
THIS CORNER RECORD WAS PREPARED BY ME OR UNDER MY DIRECT SUPERVISION IN PERFORMANCE WITH THE LAND SURVEYORS ACT
ON 6-18-90 1990
Exp. 6-18-92 STATE OF CALIFORNIA
LS 5306
SIGNED: Charles John
S or R.C.E. No. 51396

SEAL

COUNTY SURVEYOR'S CERTIFICATE
THE CORNER RECORD WAS RECEIVED _____ 19_____
AND EXAMINED AND FILED 6-18-90 1990
BY: Douglas Stinson
TITLE: Madera Co. Eng'r.

DOCUMENT No. _____

STATEMENT ON BACK OF SHEET

YES NO