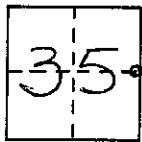


CORNER RECORD

COUNTY OF MADERA T. 6S R. 21E MT DIABLO MERIDIAN CALIFORNIA
 CORNER TYPE: GOV'T. CORNER MEANDER RANCHO CONTROL OTHER
 CORNER IDENTIFICATION - DATE OF VISIT APRIL 16 1990



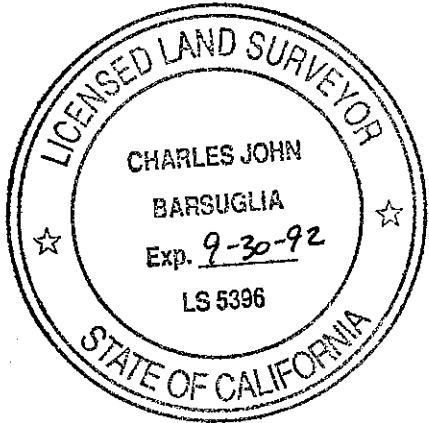
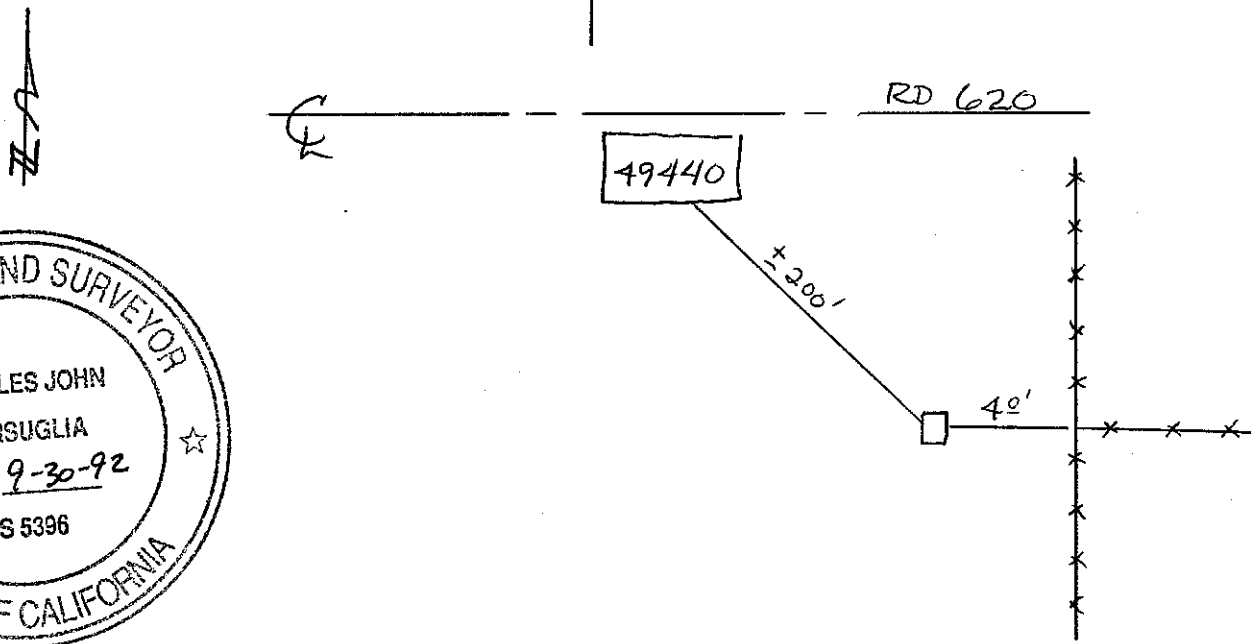
CORNER - LEFT AS FOUND FOUND AND TAGGED REESTABLISHED OBLITERATED CORNER REBUILT

PHYSICAL DESCRIPTION OF CORNER FOUND; EVIDENCE AND METHOD USED TO IDENTIFY OR REESTABLISH
FOUND 1" IRON PIPE TAGGED L.S. 2737
UP 10' IN ROCK MOUND
40' WEST OF FENCE CORNER N45E
INFORMATION FROM PARCEL MAP 821

PHYSICAL DESCRIPTION OF MONUMENTS REBUILT OR PERPETUATED

CALIFORNIA COORDINATE SYSTEM ORDER: FIRST SECOND THIRD
 STATIONS USED: NGS (USC & GS) STATE COUNTY OTHER STATION _____ STATION _____
 ZONE _____ ELEVATION _____ NORTHINGS (Y) _____ EASTINGS (X) _____

SKETCH: (Include reference tie or witness points, remarks and topo of area)



SURVEYOR'S CERTIFICATE
 THIS CORNER RECORD WAS PREPARED BY ME OR UNDER MY DIRECTION IN CONFORMANCE WITH THE LAND SURVEYORS ACT ON 6-11 1990 FOR THE STATE OF CALIFORNIA
 SIGNED: Charles John Barsuglia
 L.S. or R.C.E. No.: 5396

COUNTY SURVEYOR'S CERTIFICATE
 THE CORNER RECORD WAS RECEIVED _____ 19____ AND EXAMINED AND FILED 6-18 1990.
 BY: Doug Stinson
 TITLE: Madera Co. Eng's.
 DOCUMENT No. _____

STATEMENT ON BACK OF SHEET YES NO