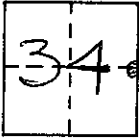


# CORNER RECORD

COUNTY OF MADERA T. 6S R. 21E MT. DIABLO MERIDIAN CALIFORNIA  
 CORNER TYPE: GOV'T. CORNER  MEANDER  RANCHO  CONTROL  OTHER   
 CORNER IDENTIFICATION - DATE OF VISIT APRIL 8 19 90



CORNER - LEFT AS FOUND  FOUND AND TAGGED  REESTABLISHED OBLITERATED CORNER  REBUILT

PHYSICAL DESCRIPTION OF CORNER FOUND; EVIDENCE AND METHOD USED TO IDENTIFY OR REESTABLISH

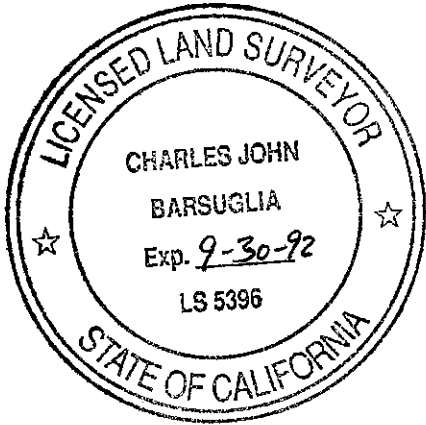
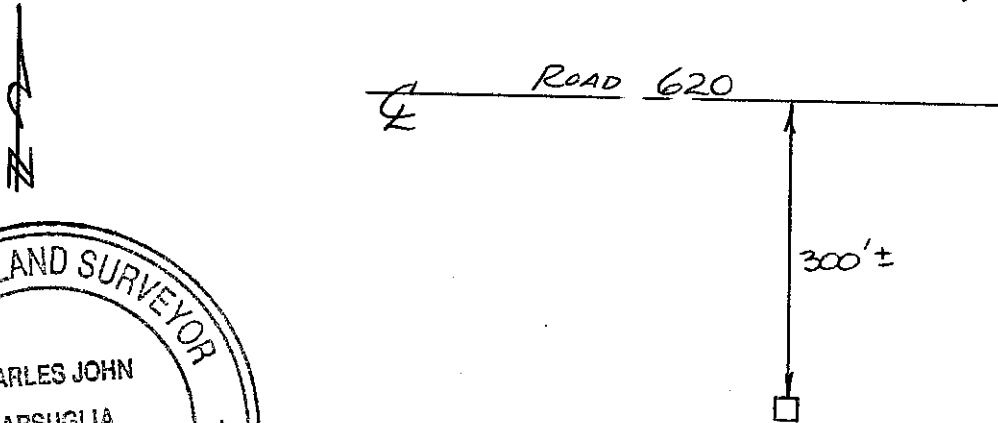
*FOUND L.S. TAG ON ROCK IN MOUND OF ROCKS.  
 INFORMATION FROM PARCEL MAP #2344*

PHYSICAL DESCRIPTION OF MONUMENTS REBUILT OR PERPETUATED

CALIFORNIA COORDINATE SYSTEM ORDER: FIRST  SECOND  THIRD   
 STATIONS USED: NGS (USC & GS)  STATE  COUNTY  OTHER  STATION \_\_\_\_\_ STATION \_\_\_\_\_  
 ZONE \_\_\_\_\_ ELEVATION \_\_\_\_\_ NORTHINGS (Y) \_\_\_\_\_ EASTINGS (X) \_\_\_\_\_

SKETCH: (Include reference tie or witness points, remarks and topo of area)

*FOUND ON WEST SLOPE IN LARGE ROCK.*



**SURVEYOR'S CERTIFICATE**  
 THIS CORNER RECORD WAS PREPARED BY ME OR UNDER MY DIRECTION IN CONFORMANCE WITH THE LAND SURVEYORS ACT ON 5-24 19 90 FOR THE STATE OF CALIFORNIA

SIGNED: Charles Barsuglia  
 L.S. or R.C.E. No.: 5396

SEAL

**COUNTY SURVEYOR'S CERTIFICATE**  
 THE CORNER RECORD WAS RECEIVED \_\_\_\_\_ 19\_\_\_\_ AND EXAMINED AND FILED 6-18 19 90  
 BY: Wanda Stinson  
 TITLE: Madera Co. Eng'r

DOCUMENT No. \_\_\_\_\_

STATEMENT ON BACK OF SHEET

YES  NO