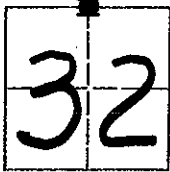


# CORNER RECORD

COUNTY OF MADERA    TOWNSHIP    6    SOUTH,    RANGE    21    EAST, M.D.B.&M.    CALIFORNIA

CORNER TYPE:    GOV'T. CORNER     MEANDER     RANCHO     CONTROL     OTHER

CORNER IDENTIFICATION - DATE OF VISIT:    April    19 80



NORTH  $\frac{1}{4}$  CORNER OF SECTION 32, 6/21.

CORNER - LEFT AS FOUND     FOUND AND TAGGED     REESTABLISHED     OBLITERATED CORNER     REBUILT

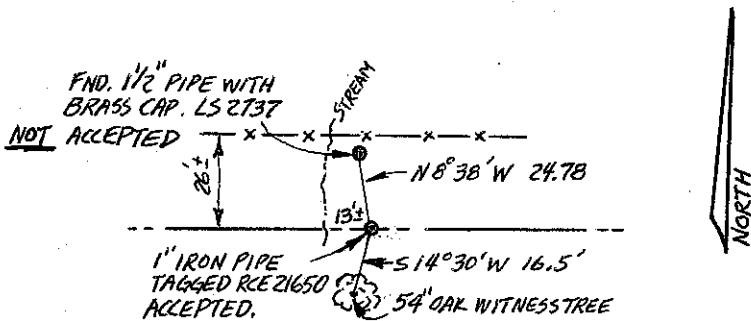
PHYSICAL DESCRIPTION OF CORNER FOUND; EVIDENCE AND METHOD USED TO IDENTIFY OR REESTABLISH

Found & accepted 1" Iron Pipe tagged "RCE 21650" Previously set by me per Gov't. call from 54" Oak witness tree.  
 Also found 1½" Iron Pipe with Brass Cap "LS 2737" - N 8°38'W , 24.78'  
 (see R/S - 26/69) NOT ACCEPTED.

PHYSICAL DESCRIPTION OF MONUMENTS REBUILT OR PERPETUATED

CALIFORNIA COORDINATE SYSTEM ORDER:    FIRST     SECOND     THIRD   
 STATIONS USED:    NGS (USC & GS)     STATE     COUNTY     OTHER     STATION \_\_\_\_\_ STATION \_\_\_\_\_  
 ZONE \_\_\_\_\_ ELEVATION \_\_\_\_\_ NORTHINGS (Y) \_\_\_\_\_ EASTINGS (X) \_\_\_\_\_

SKETCH: (INCLUDE REFERENCE TIE OR WITNESS POINTS, REMARKS AND TOPO OF AREA)



Found burnt remains of White Oak stump - N 21°45'E , 82'+-  
 (Gov't - 72'+-)

Note: Copied from Record of Survey for Earl Calabresi  
 Surveyed by Joseph C. Smyth, RCE 21650.

**SURVEYOR'S CERTIFICATE**

THIS CORNER RECORD WAS PREPARED BY ME OR UNDER MY DIRECTION IN CONFORMANCE WITH THE LAND SURVEYOR'S ACT ON \_\_\_\_\_ 19\_\_\_\_.

SIGNED: \_\_\_\_\_

L.S. or R.C.E. No: \_\_\_\_\_

SEAL

**COUNTY SURVEYOR'S CERTIFICATE**

THE CORNER RECORD WAS RECEIVED \_\_\_\_\_ 19\_\_\_\_

AND EXAMINED AND FILED \_\_\_\_\_ 19\_\_\_\_.

BY: \_\_\_\_\_

TITLE: \_\_\_\_\_

DOCUMENT No: \_\_\_\_\_

STATEMENT ON BACK OF SHEET:    YES     NO