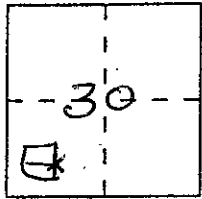


CORNER RECORD

Document Number 6915

City of _____ County of Madera, California

Legal Description South~~west~~^{east} Corner of Parcel 1, PM #3476 Book 44 of Maps by 12 Section 30, T6S, R21E, MDB&M



CORNER TYPE

Government Corner Control
 Meander Property
 Rancho Other
 Date of Survey 4/25/96

COORDINATES (Optional)

N. _____
 E. _____
 Zone _____ Datum _____
 Elev. _____

Corner — Left as found Found and tagged Established Reestablished Rebuilt

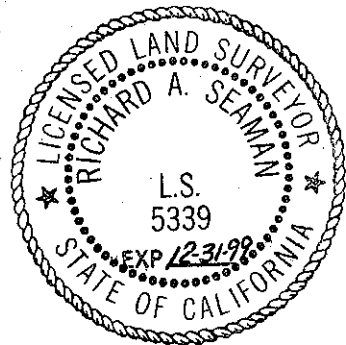
Identification and type of corner found: Evidence used to identify or procedure used to establish or reestablish the corner:
Reestablished the easterly lines of Parcels 1 & 2 and reset the South~~west~~^{east} corner at the record position

A description of the physical condition of the monument as found and as set or reset: Found a nail hole at record position, reset nail with Brass Tag, stamped LS 5339.

SURVEYOR'S STATEMENT

This Corner Record was prepared by me or under my direction in conformance with the Land Surveyors' Act on 26 April 1996.

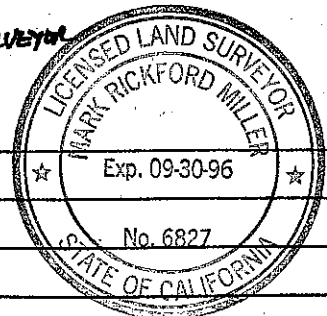
Signed [Signature] L.S. or R.C.E. Number LS 5339



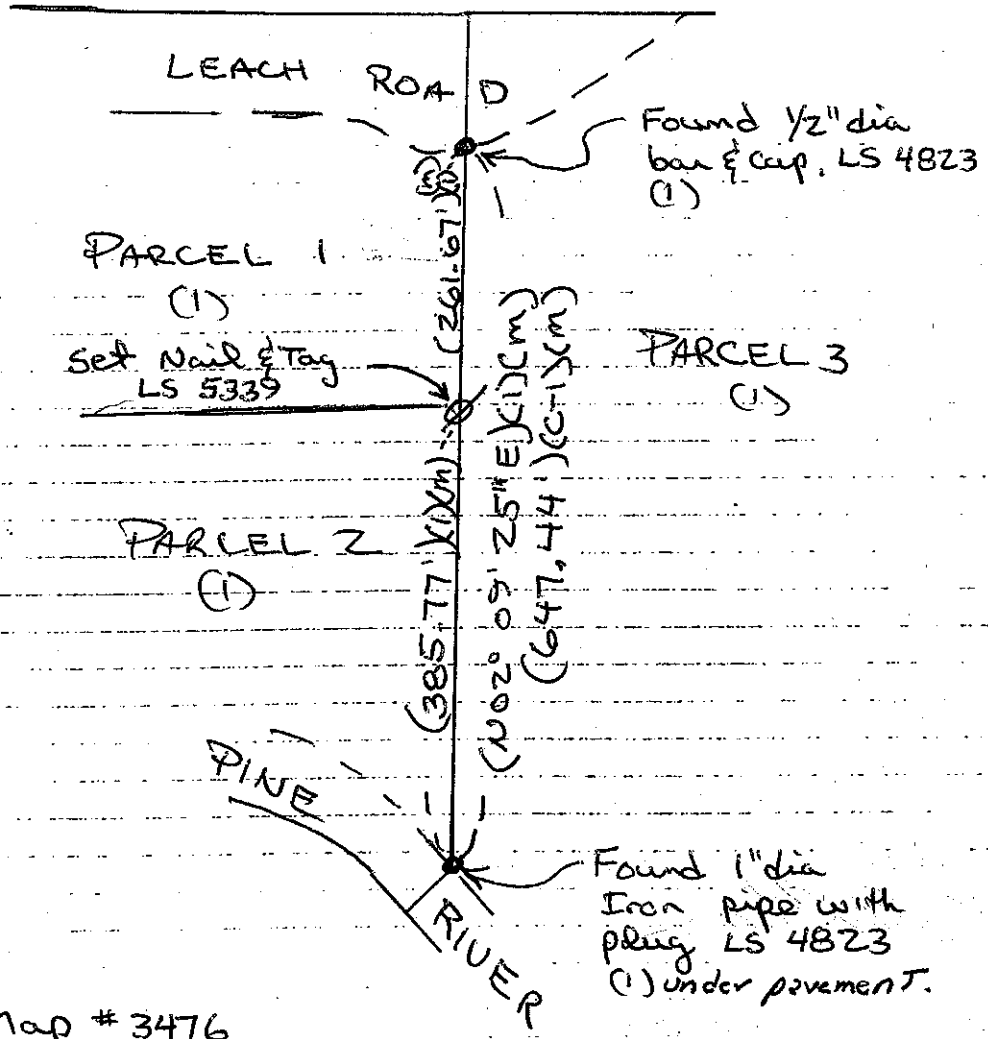
COUNTY SURVEYOR'S STATEMENT

This Corner Record was received 1 MAY 1996 and examined and filed 16 MAY 1996.

Signed [Signature] Title ACTING COUNTY SURVEYOR



County Surveyor's Comment _____



NO SCALE

(1) Parcel map # 3476
 Book 44 of Maps, Page 12
 Madera Co. Records

~~(m) measured data~~

(m) measured data

0621