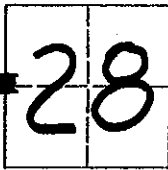


# CORNER RECORD

COUNTY OF MADERA    TOWNSHIP    **6**    SOUTH,    RANGE    **21**    EAST,    M.D.B.&M.    CALIFORNIA

CORNER TYPE:    GOV'T. CORNER     MEANDER     RANCHO     CONTROL     OTHER

CORNER IDENTIFICATION - DATE OF VISIT:    April    19 80



WEST  $\frac{1}{4}$  CORNER OF SECTION 28, 6/21.

CORNER - LEFT AS FOUND     FOUND AND TAGGED     REESTABLISHED OBLITERATED CORNER     REBUILT

PHYSICAL DESCRIPTION OF CORNER FOUND; EVIDENCE AND METHOD USED TO IDENTIFY OR REESTABLISH

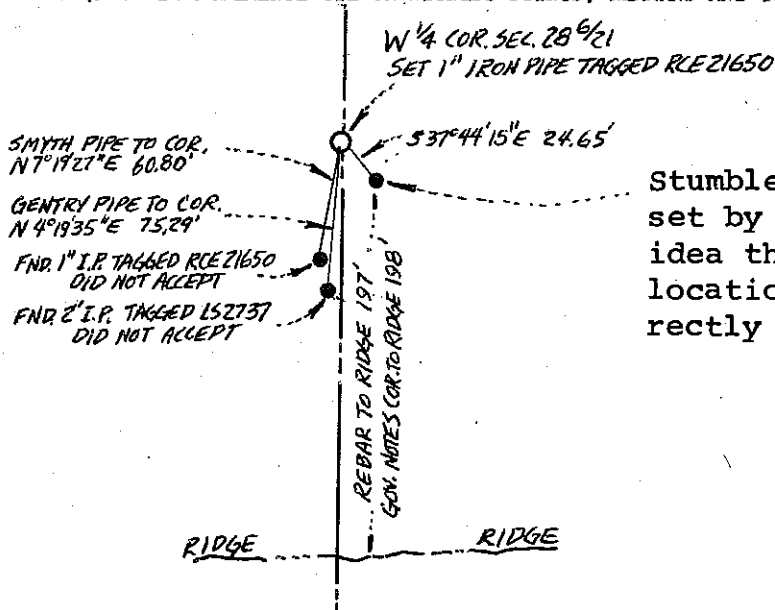
Found 2" Iron Pipe tagged "LS 2737" - NOT ACCEPTED  
 Found 1" Iron Pipe tagged "RCE 21650" - NOT ACCEPTED  
 Found  $\frac{1}{2}$ " re-bar - NOT ACCEPTED

PHYSICAL DESCRIPTION OF MONUMENTS REBUILT OR PERPETUATED

Set 1" Iron Pipe tagged "RCE 21650" by single proportion between the NW & SW corners of section 28.

CALIFORNIA COORDINATE SYSTEM ORDER:    FIRST     SECOND     THIRD   
 STATIONS USED:    NGS (USC & GS)     STATE     COUNTY     OTHER     STATION \_\_\_\_\_ STATION \_\_\_\_\_  
 ZONE \_\_\_\_\_ ELEVATION \_\_\_\_\_ NORTHINGS (Y) \_\_\_\_\_ EASTINGS (X) \_\_\_\_\_

SKETCH: (INCLUDE REFERENCE TIE OR WITNESS POINTS, REMARKS AND TOPO OF AREA)



Stumbled into a  $\frac{1}{2}$ " re-bar apparently set by some rancher who had a better idea than either Gentry or I as to the location of the corner that we incorrectly established on two prior surveys



**Note:** Copied from Record of Survey for Earl Calabresi  
 Surveyed by Joseph C. Smyth, RCE 21650.

**SURVEYOR'S CERTIFICATE**

THIS CORNER RECORD WAS PREPARED BY ME OR UNDER MY DIRECTION IN CONFORMANCE WITH THE LAND SURVEYOR'S ACT ON \_\_\_\_\_ 19\_\_\_\_.

SIGNED: \_\_\_\_\_

L.S. or R.C.E. No: \_\_\_\_\_

SEAL

**COUNTY SURVEYOR'S CERTIFICATE**

THE CORNER RECORD WAS RECEIVED \_\_\_\_\_ 19\_\_\_\_

AND EXAMINED AND FILED \_\_\_\_\_ 19\_\_\_\_.

BY: \_\_\_\_\_

TITLE: \_\_\_\_\_

DOCUMENT No: \_\_\_\_\_

STATEMENT ON BACK OF SHEET:    YES     NO