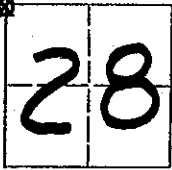


CORNER RECORD

COUNTY OF MADERA TOWNSHIP **6** SOUTH, RANGE **21** EAST, M.D.B.&M. CALIFORNIA

CORNER TYPE: GOV'T. CORNER MEANDER RANCHO CONTROL OTHER

CORNER IDENTIFICATION - DATE OF VISIT: April 19 80



NORTHWEST CORNER OF SECTION 28, 6/21.

CORNER - LEFT AS FOUND FOUND AND TAGGED REESTABLISHED OBLITERATED CORNER REBUILT

PHYSICAL DESCRIPTION OF CORNER FOUND; EVIDENCE AND METHOD USED TO IDENTIFY OR REESTABLISH

Location determined by Line-Line intersection between the West $\frac{1}{4}$ corner of sec. 33 & the East $\frac{1}{4}$ corner of sec. 20 (North-South) and the North $\frac{1}{4}$ corners of secs. 28 & 29 (East-West).

PHYSICAL DESCRIPTION OF MONUMENTS REBUILT OR PERPETUATED

Set 1" Iron Pipe with tag "RCE 21650".

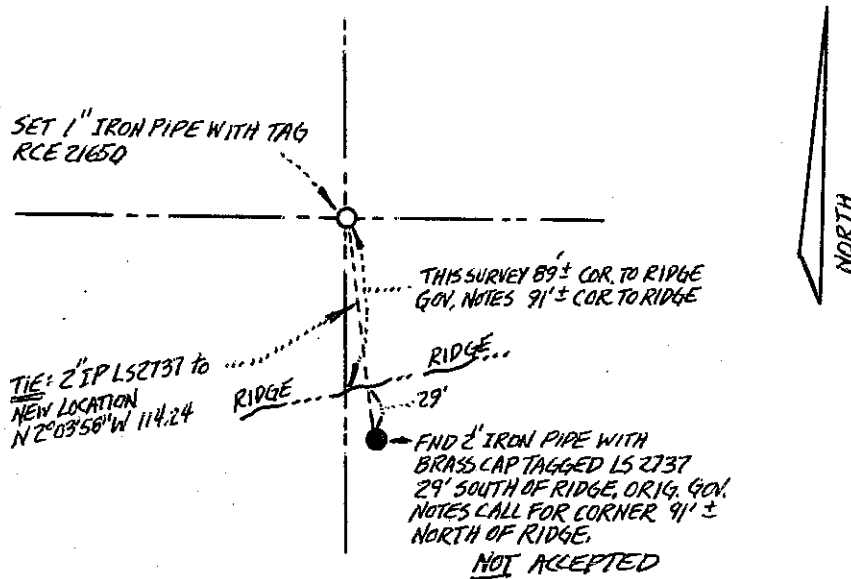
Also found 2" Iron Pipe tagged "LS 2737" - S 2°03'58"E , 114.24' from corner. NOT ACCEPTED.

CALIFORNIA COORDINATE SYSTEM ORDER: FIRST SECOND THIRD

STATIONS USED: NGS (USC & GS) STATE COUNTY OTHER STATION _____ STATION _____

ZONE _____ ELEVATION _____ NORTHINGS (Y) _____ EASTINGS (X) _____

SKETCH: (INCLUDE REFERENCE TIE OR WITNESS POINTS, REMARKS AND TOPO OF AREA)



**Note: Copied from Record of Survey for Earl Calabresi
Surveyed by Joseph C. Smyth, RCE 21650.**

SURVEYOR'S CERTIFICATE

THIS CORNER RECORD WAS PREPARED BY ME OR UNDER MY DIRECTION IN CONFORMANCE WITH THE LAND SURVEYOR'S ACT ON _____ 19____.

SIGNED: _____

L.S. or R.C.E. No: _____

COUNTY SURVEYOR'S CERTIFICATE

THE CORNER RECORD WAS RECEIVED _____ 19____

AND EXAMINED AND FILED _____ 19____.

BY: _____

TITLE: _____

DOCUMENT No: _____

STATEMENT ON BACK OF SHEET: YES NO